

# NOCLIN MURA 2334



NOCLIN MURA 2334  
Ivoire 115



NOCLIN MURA 2334  
Dune 170



NOCLIN MURA 2334  
Savane 185



NOCLIN MURA 2334  
Rose 129



NOCLIN MURA 2334  
Grenat 56



NOCLIN MURA 2334  
Terre 107



NOCLIN MURA 2334  
Cassis 97



NOCLIN MURA 2334  
Olive 61



NOCLIN MURA 2334  
Turquoise 53



NOCLIN MURA 2334  
Saphir 106



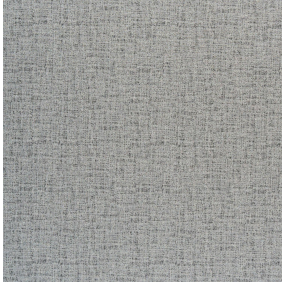
NOCLIN MURA 2334  
Glacier 43



NOCLIN MURA 2334  
Mastic 48



NOCLIN MURA 2334  
Fusain 71



# NOCLIN MURA 2334

## Minéral 157

False plain design printed on our Blackout double-side Noclin, the Mura design is inspired by the asperities and shades of a wall aged by time as to create a subtle material effect.

### Technical properties



Thermal

Applications Roman blinds - Panel curtains - Curtains

Composition Polyester enduction acrylique

Weight 380 g/m<sup>2</sup> Width 280 cm

Fabric direction Room High Direction Fitting ↔ cm ↓ cm

Maintenance advice    

Minimum order 1 linear(s) meter(s)

## Technical characteristics

Flame retardant	B1 / IMO PASS	
Optical index	Light reflexion :	53 %
	Light absorption :	47 %
	Light transmission :	0 %
Thermal index	Solar reflexion :	64 %
	Solar absorption :	36 %
	Solar transmission :	0 %
	UV transmission :	0 %
	Gtot :	Gt 36 % Fc 61 %
Resilience	Lightfastness (units Class/8)	4
	Dimensional Stability (%)	
	Warp	-1
	Weft	-1
	Breaking Elongation	
	Warp	48
	Weft	72
	Breaking load (daN)	
	Warp	51
Weft	84	

**drapilux**  
By Sotexpro

DRAPILUX GmbH - Hofenstraße 3, 77694 Kehl - Deutschland

Non-contractual photos and colors - Indicative fitting - Fitting may vary depending on support selected