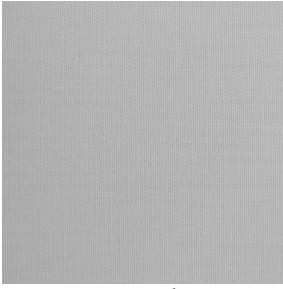
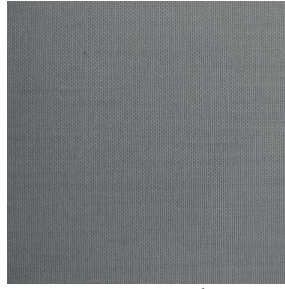


# MIRAGE 2



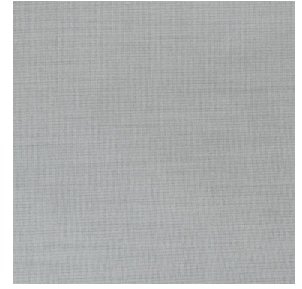
MIRAGE 2 Blanc 01



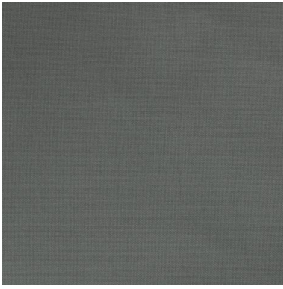
MIRAGE 2 Perle 96



MIRAGE 2 Crème 02



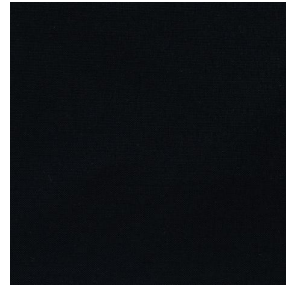
MIRAGE 2 Mastic 48



MIRAGE 2 Sienne 29



MIRAGE 2 Anthracite 38



MIRAGE 2 Noir 10



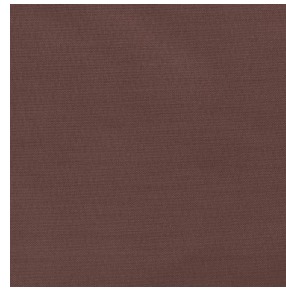
MIRAGE 2 Taupe 95



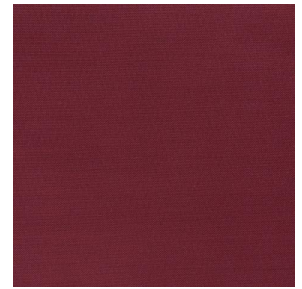
MIRAGE 2 Or 94



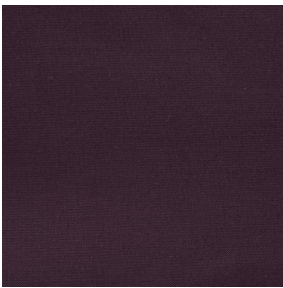
MIRAGE 2 Terre 107



MIRAGE 2 Chamois 111



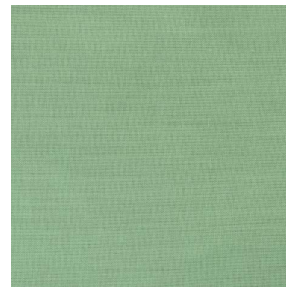
MIRAGE 2 Bordeaux 04



MIRAGE 2 Aubergine 27



MIRAGE 2 Bergamotte  
121



MIRAGE 2 Tilleul 103



MIRAGE 2 Emeraude 88



MIRAGE 2 Indigo 144

**drapilux**  
By Sotexpro

DRAPILUX GmbH - Hofenstraße 3, 77694 Kehl - Deutschland

Non-contractual photos and colors - Indicative fitting - Fitting may vary depending on support selected



# MIRAGE 2 Kaki 148

This plain fabric with aluminised backing is perfect for sunlight protection, Fabric cannot be installed in wet areas. Dry cleaning required. Please note: this fabric is not suitable for horizontal installation.

## Technical properties



Flame retardant



Thermal

**Applications** Roman blinds - Roller blinds - Panel curtains - Curtains

**Composition** 100% Aluminized Polyester

**Weight** 200 g/m<sup>2</sup> **Width** 280 cm

**Fabric direction** Room high or standard direction **Fitting** ↔ cm ↓ cm

**Maintenance advice** ☒ ☒ ☒ ☒ ☒ ☒

**Minimum order** 1 linear(s) meter(s)

## Technical characteristics

Flame retardant	M1 / IMO PASS	
Optical index	Light reflexion :	55 %
	Light absorption :	38 %
	Light transmission :	7 %
Thermal index	Solar reflexion :	56 %
	Solar absorption :	37 %
	Solar transmission :	7 %
	UV transmission :	5 %
	Gtot :	Gt 39 % Fc 66 %
Resilience	Lightfastness (units Class/8)	6
	Dimensional Stability (%)	
	Warp	0
	Weft	-0.5
	Breaking Elongation	
	Warp	25
	Weft	23
	Breaking load (daN)	
	Warp	110
Weft	140	

**drapilux**  
By Sotexpro

DRAPILUX GmbH - Hofenstraße 3, 77694 Kehl - Deutschland

Non-contractual photos and colors - Indicative fitting - Fitting may vary depending on support selected