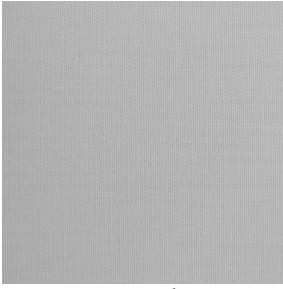
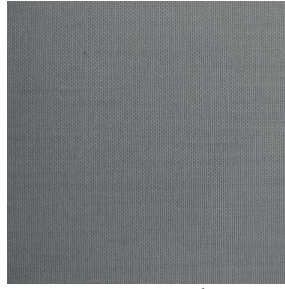


# MIRAGE 2



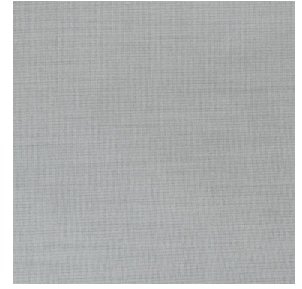
MIRAGE 2 Blanc 01



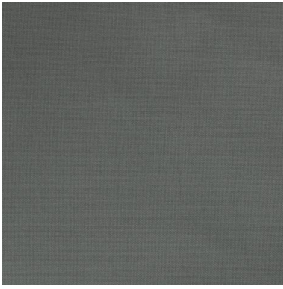
MIRAGE 2 Perle 96



MIRAGE 2 Crème 02



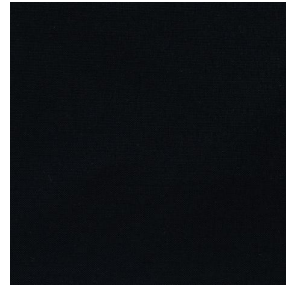
MIRAGE 2 Mastic 48



MIRAGE 2 Sienne 29



MIRAGE 2 Anthracite 38



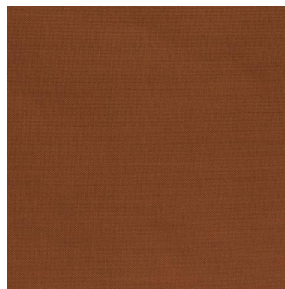
MIRAGE 2 Noir 10



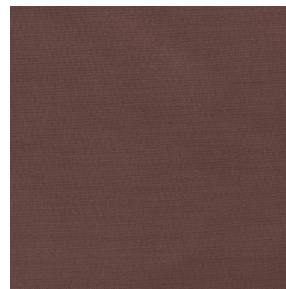
MIRAGE 2 Taupe 95



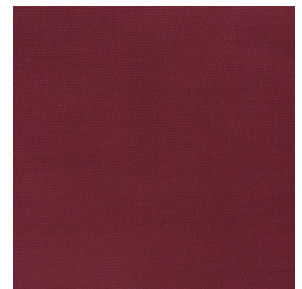
MIRAGE 2 Or 94



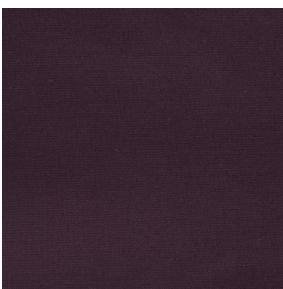
MIRAGE 2 Terre 107



MIRAGE 2 Chamois 111



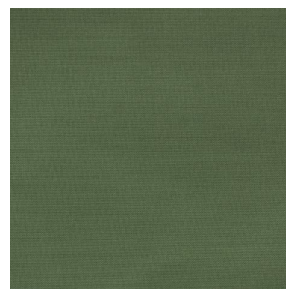
MIRAGE 2 Bordeaux 04



MIRAGE 2 Aubergine 27



MIRAGE 2 Tilleul 103



MIRAGE 2 Kaki 148



MIRAGE 2 Emeraude 88



MIRAGE 2 Indigo 144

**drapilux**  
By Sotexpro

DRAPILUX GmbH - Hafenstraße 3, 77694 Kehl - Deutschland

Non-contractual photos and colors - Indicative fitting - Fitting may vary depending on support selected



# MIRAGE 2 Bergamotte 121

This plain fabric with aluminised backing is perfect for sunlight protection, Fabric cannot be installed in wet areas. Dry cleaning required. Please note: this fabric is not suitable for horizontal installation.

## Technical properties



Flame retardant



Thermal

**Applications** Roman blinds - Roller blinds - Panel curtains - Curtains

**Composition** 100% Aluminized Polyester

**Weight** 200 g/m<sup>2</sup> **Width** 280 cm

**Fabric direction** Room high or standard direction **Fitting** ↔ cm ↓ cm

**Maintenance advice** ☒ ☒ ☒ ☒ ☒ ☒

**Minimum order** 1 linear(s) meter(s)

## Technical characteristics

|                 |                               |                 |
|-----------------|-------------------------------|-----------------|
| Flame retardant | M1 / IMO PASS                 |                 |
| Optical index   | Light reflexion :             | 55 %            |
|                 | Light absorption :            | 38 %            |
|                 | Light transmission :          | 7 %             |
| Thermal index   | Solar reflexion :             | 56 %            |
|                 | Solar absorption :            | 37 %            |
|                 | Solar transmission :          | 7 %             |
|                 | UV transmission :             | 5 %             |
|                 | Gtot :                        | Gt 39 % Fc 66 % |
| Resilience      | Lightfastness (units Class/8) | 6               |
|                 | Dimensional Stability (%)     |                 |
|                 | Warp                          | 0               |
|                 | Weft                          | -0.5            |
|                 | Breaking Elongation           |                 |
|                 | Warp                          | 25              |
|                 | Weft                          | 23              |
|                 | Breaking load (daN)           |                 |
|                 | Warp                          | 110             |
| Weft            | 140                           |                 |

**drapilux**  
By Sotexpro

DRAPILUX GmbH - Hafenstraße 3, 77694 Kehl - Deutschland

Non-contractual photos and colors - Indicative fitting - Fitting may vary depending on support selected