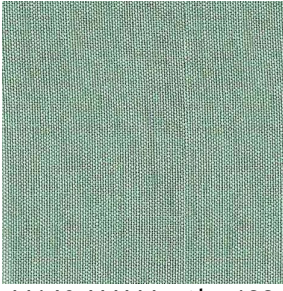
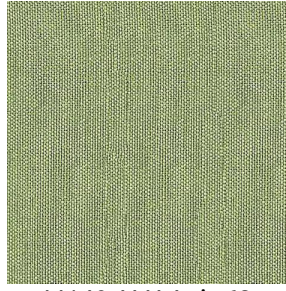


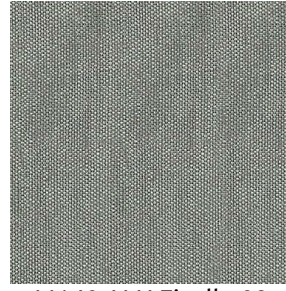
M140 ALU



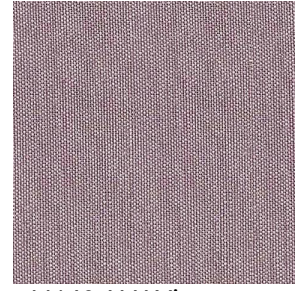
M140 ALU Menthe 122



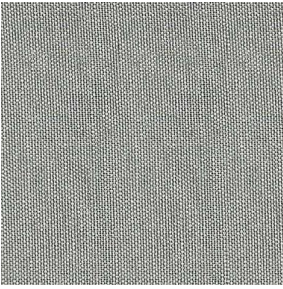
M140 ALU Anis 62



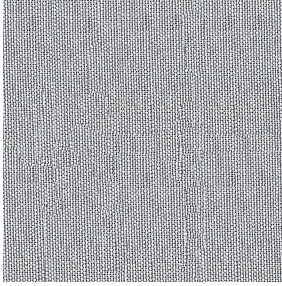
M140 ALU Ficelle 09



M140 ALU Vieux rose
64



M140 ALU Lin 11



M140 ALU Gris 97

Technical properties



Flame retardant



Thermal



Sheer

Applications Roman blinds - Panel curtains - Curtains

Composition 100% aluminized FR polyester

Weight 70 g/m² Width 280 cm

Fabric direction Room high or standard direction Fitting ↔ cm ↓ cm

Maintenance advice     

Minimum order 1 linear(s) meter(s)

Technical characteristics

Flame retardant	M1 / IMO PASS	
Optical index	Light reflexion :	32 %
	Light absorption :	40 %
	Light transmission :	28 %
Transparent veil	Yes	
Thermal index	Solar reflexion :	34 %
	Solar absorption :	36 %
	Solar transmission :	30 %
	UV transmission :	28 %
	Gtot :	Gt 46 % Fc 78 %
Resilience	Lightfastness (units Class/8)	4
	Dimensional Stability (%)	
	Warp	-0,5
	Weft	0
	Breaking Elongation	
	Warp	14
	Weft	33
	Breaking load (daN)	
	Warp	45
	Weft	41

drapilux
By Sotexpro

DRAPILUX GmbH - Hafenstraße 3, 77694 Kehl - Deutschland

Non-contractual photos and colors - Indicative fitting - Fitting may vary depending on support selected