

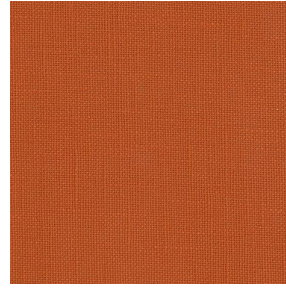
LINOSA



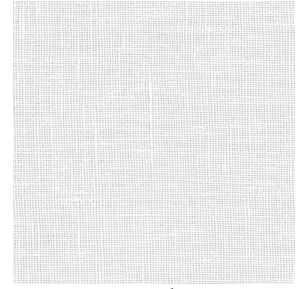
LINOSA Lin 11



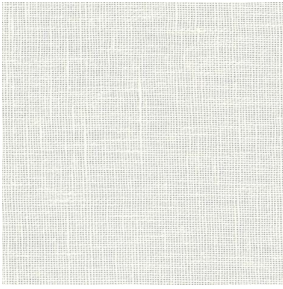
LINOSA Miel 17



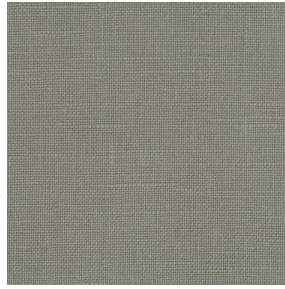
LINOSA Terracotta 65



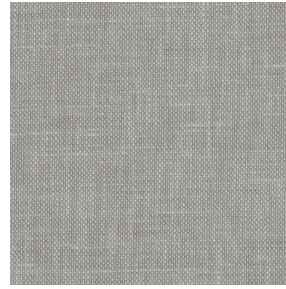
LINOSA Blanc 01



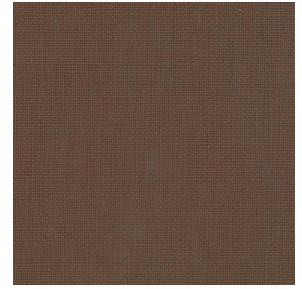
LINOSA Ivoire 02



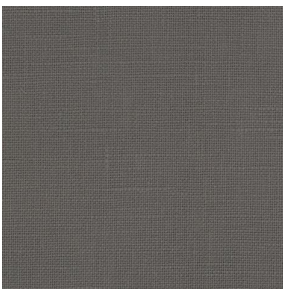
LINOSA Souris 31



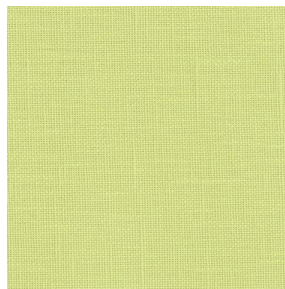
LINOSA Havane 44



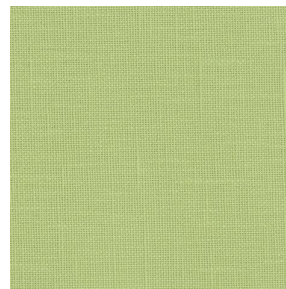
LINOSA Taupe 95



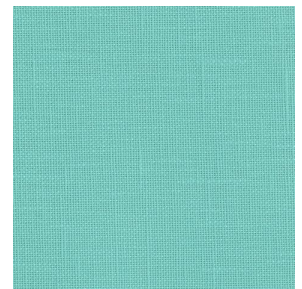
LINOSA Anthracite 38



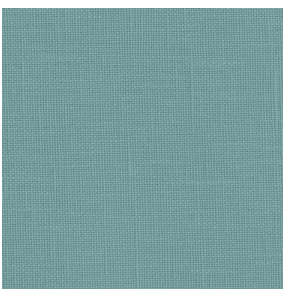
LINOSA Bergamotte
121



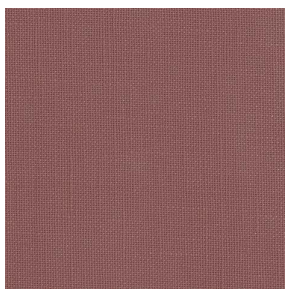
LINOSA Tilleul 103



LINOSA Lagon 110



LINOSA Glacier 43

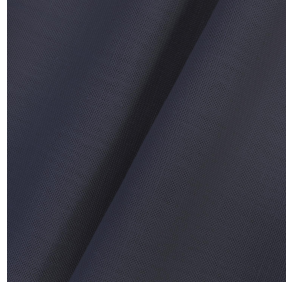
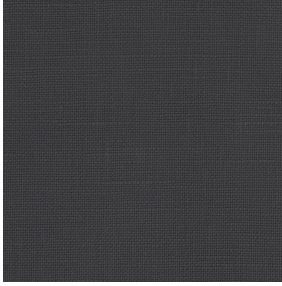


LINOSA Muscade 175

drapilux
By Sotexpro

DRAPILUX GmbH - Hafenstraße 3, 77694 Kehl - Deutschland

Non-contractual photos and colors - Indicative fitting - Fitting may vary depending on support selected



LINOSA Titanium 98

This plain, light-filtering fabric resembling linen is captivating and perfect for natural and warm décor.

Technical properties



Flame retardant

Applications Roman blinds - Panel curtains - Curtains - Cushions - Decorative frames

Composition 100% FR polyester

Weight 260 g/m² 0 g/ml Width 280 cm

Fabric direction Room high or standard direction Fitting ↔ cm ↓ cm

Maintenance advice     

Labels France Terre Textile (R016)

Certifications OEKO-TEX STANDARD 100 (CQ 1006/1)

Minimum order 1 linear(s) meter(s)



Technical characteristics

Flame retardant

M1 / IMO PASS

Optical index

Light reflexion : 9 %

Light absorption : 86 %

Light transmission : 5 %

Thermal index

Solar reflexion : 36 %

Solar absorption : 45 %

Solar transmission : 19 %

UV transmission : 8 %

Gtot : Gt 45 % Fc 77 %

Resilience

Lightfastness (units Class/8) 3

Pilling 1-2

Dimensional Stability (%)

Warp -2

Weft -0.5

Martindale (Cycles) 30000

Breaking Elongation

Warp 25

Weft 25

Breaking load (daN)

Warp 140

Weft 100

drapilux
By Sotexpro

DRAPILUX GmbH - Hofenstraße 3, 77694 Kehl - Deutschland

Non-contractual photos and colors - Indicative fitting - Fitting may vary depending on supports selected