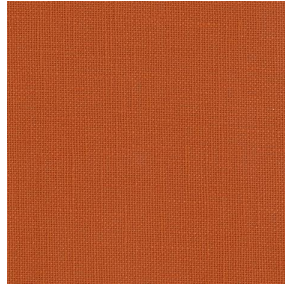


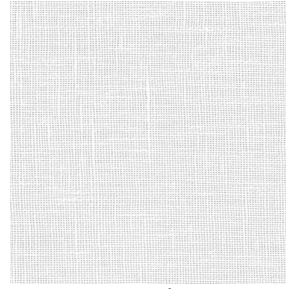
LINOSA



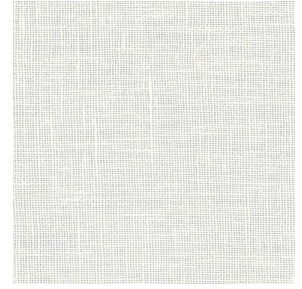
LINOSA Lin 11



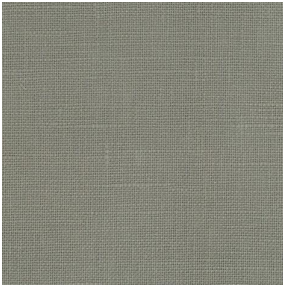
LINOSA Terracotta 65



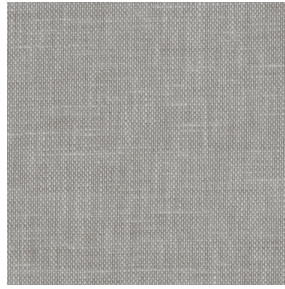
LINOSA Blanc 01



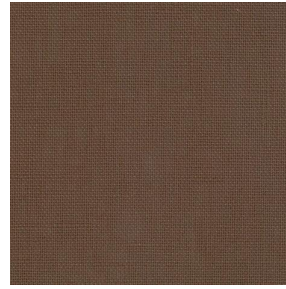
LINOSA Ivoire 02



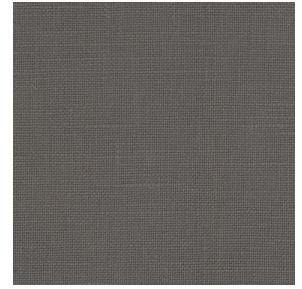
LINOSA Souris 31



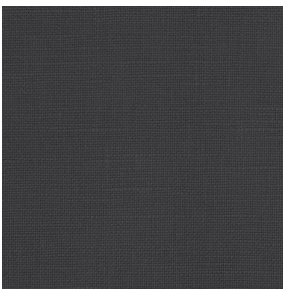
LINOSA Havane 44



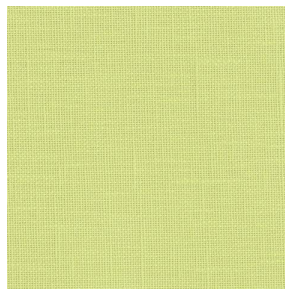
LINOSA Taupe 95



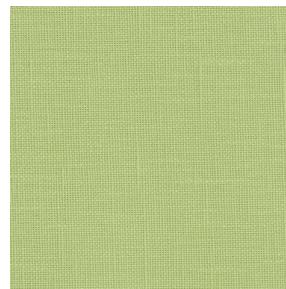
LINOSA Anthracite 38



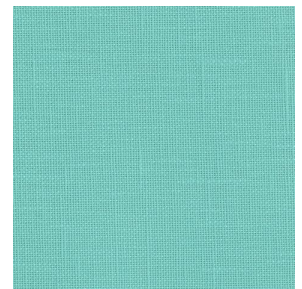
LINOSA Titanium 98



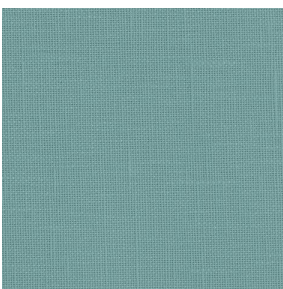
LINOSA Bergamotte
121



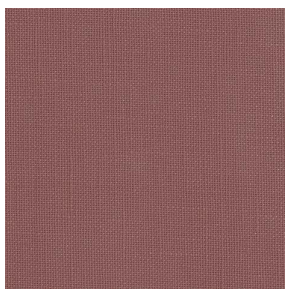
LINOSA Tilleul 103



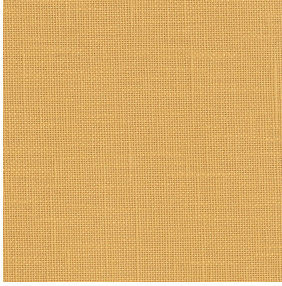
LINOSA Lagon 110



LINOSA Glacier 43



LINOSA Muscade 175



LINOSA Miel 17

This plain, light-filtering fabric resembling linen is captivating and perfect for natural and warm décor.

Technical properties








Flame retardant

Applications Decorative frames - Roman blinds - Panel curtains - Curtains - Cushions

Composition 100% FR polyester

Weight 260 g/m² 0 g/ml **Width** 280 cm

Fabric direction Room high or standard direction **Fitting** ↔ cm ↓ cm

Maintenance advice     

Labels France Terre Textile (R016)

Certifications OEKO-TEX STANDARD 100 (CQ 1006/1)

Minimum order 1 linear(s) meter(s)



Technical characteristics

Flame retardant

M1 / B1 / IMO PASS / UNI 8456 / 9174 Classe Uno

Optical index

Light reflexion : **33 %**

Light absorption : **51 %**

Light transmission : **16 %**

Thermal index

Solar reflexion : **46 %**

Solar absorption : **28 %**

Solar transmission : **26 %**

UV transmission : **14 %**

Gtot : **Gt 42 % Fc 71 %**

Resilience

Lightfastness (units Class/8) **6**

Pilling **1-2**

Dimensional Stability (%)

Warp **-2**

Weft **-0.5**

Martindale (Cycles) **30000**

Breaking Elongation

Warp **25**

Weft **25**

Breaking load (daN)

Warp **140**

Weft **100**

drapilux
By Sotexpro

DRAPILUX GmbH - Hofenstraße 3, 77694 Kehl - Deutschland

Non-contractual photos and colors - Indicative fitting - Fitting may vary depending on support selected