

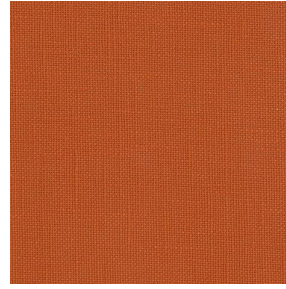
# LINOSA



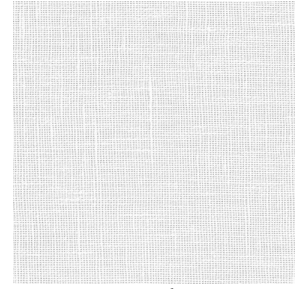
LINOSA Lin 11



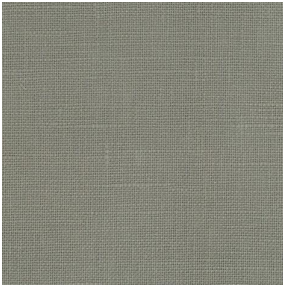
LINOSA Miel 17



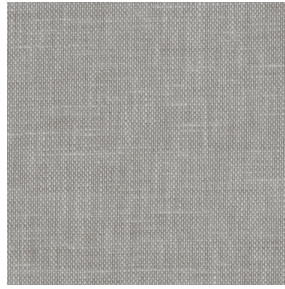
LINOSA Terracotta 65



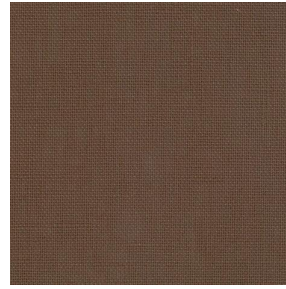
LINOSA Blanc 01



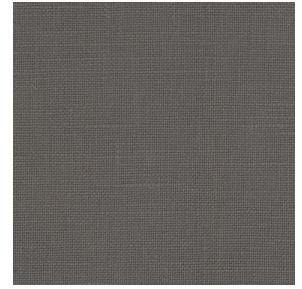
LINOSA Souris 31



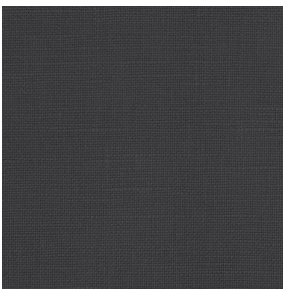
LINOSA Havane 44



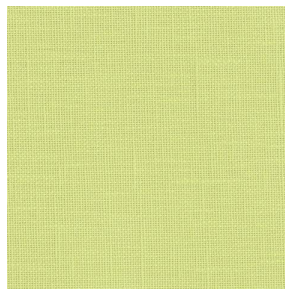
LINOSA Taupe 95



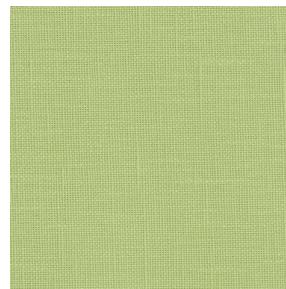
LINOSA Anthracite 38



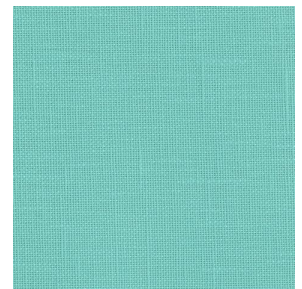
LINOSA Titanium 98



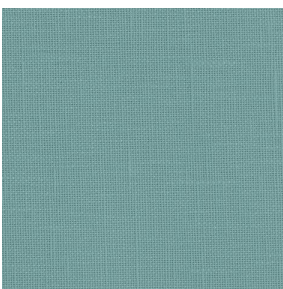
LINOSA Bergamotte  
121



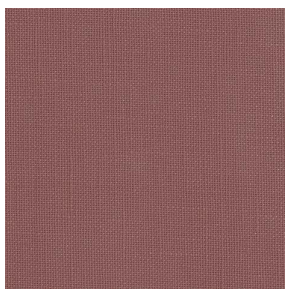
LINOSA Tilleul 103



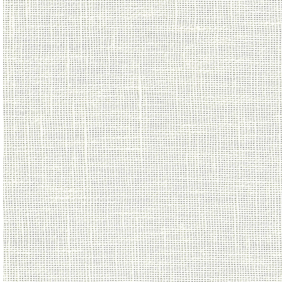
LINOSA Lagon 110



LINOSA Glacier 43



LINOSA Muscade 175



# LINOSA Ivoire 02

This plain, light-filtering fabric resembling linen is captivating and perfect for natural and warm décor.

## Technical properties



Flame retardant

**Applications** Decorative frames - Roman blinds - Panel curtains - Curtains - Cushions

**Composition** 100% FR polyester

**Weight** 260 g/m<sup>2</sup> 0 g/ml **Width** 280 cm

**Fabric direction** Room high or standard direction **Fitting** ↔ cm ↓ cm

**Maintenance advice**     

**Labels** France Terre Textile (R016)

**Certifications** OEKO-TEX STANDARD 100 (CQ 1006/1)

**Minimum order** 1 linear(s) meter(s)



## Technical characteristics

Flame retardant

M1 / B1 / IMO PASS / UNI 8456 / 9174 Classe Uno

Optical index

Light reflexion : **59 %**

Light absorption : **5 %**

Light transmission : **36 %**

Thermal index

Solar reflexion : **58 %**

Solar absorption : **7 %**

Solar transmission : **35 %**

UV transmission : **22 %**

Gtot : **Gt 39 % Fc 65 %**

Resilience

Lightfastness (units Class/8) **6**

Pilling **1-2**

Dimensional Stability (%)

Warp **-2**

Weft **-0.5**

Martindale (Cycles) **30000**

Breaking Elongation

Warp **25**

Weft **25**

Breaking load (daN)

Warp **140**

Weft **100**

**drapilux**  
By Sotexpro

DRAPILUX GmbH - Hofenstraße 3, 77694 Kehl - Deutschland

Non-contractual photos and colors - Indicative fitting - Fitting may vary depending on support selected