

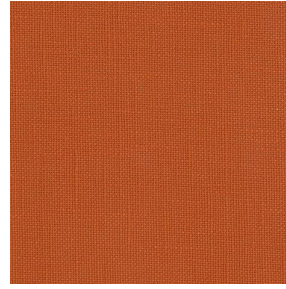
LINOSA



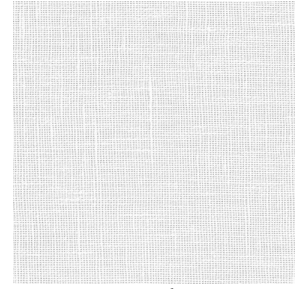
LINOSA Lin 11



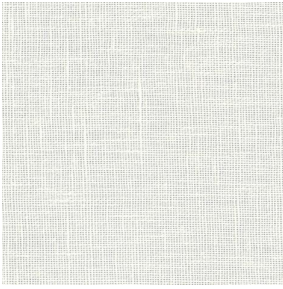
LINOSA Miel 17



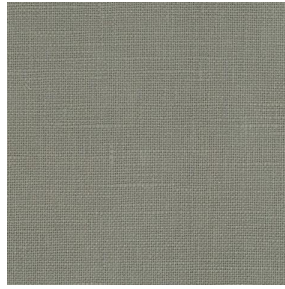
LINOSA Terracotta 65



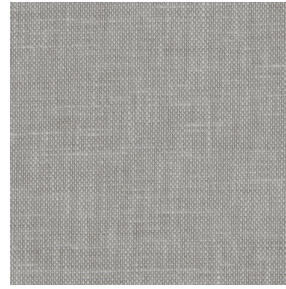
LINOSA Blanc 01



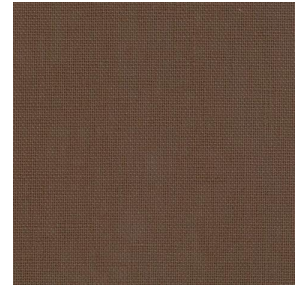
LINOSA Ivoire 02



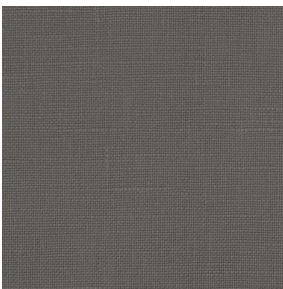
LINOSA Souris 31



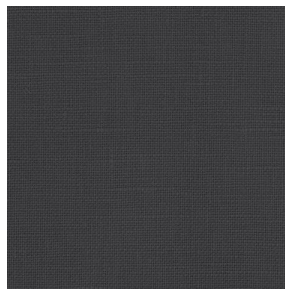
LINOSA Havane 44



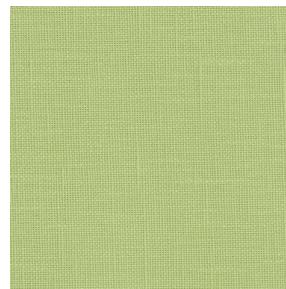
LINOSA Taupe 95



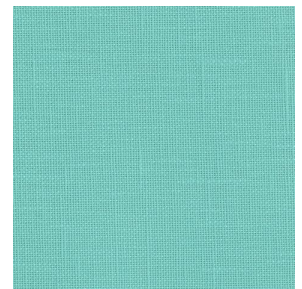
LINOSA Anthracite 38



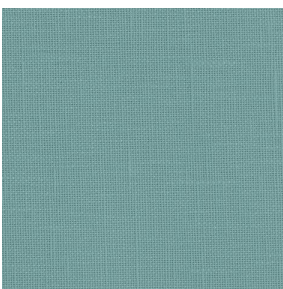
LINOSA Titanium 98



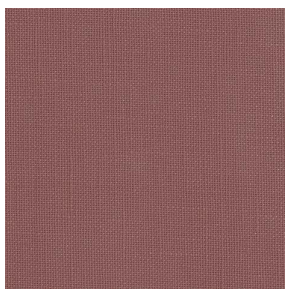
LINOSA Tilleul 103



LINOSA Lagon 110



LINOSA Glacier 43

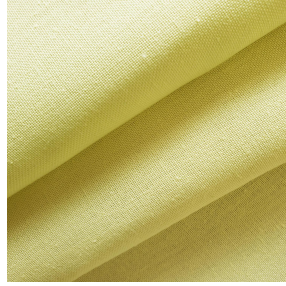


LINOSA Muscade 175

drapilux
By Sotexpro

DRAPILUX GmbH - Hafenstraße 3, 77694 Kehl - Deutschland

Non-contractual photos and colors - Indicative fitting - Fitting may vary depending on support selected



LINOSA Bergamotte 121

This plain, light-filtering fabric resembling linen is captivating and perfect for natural and warm décor.

Technical properties



Flame retardant

Applications Decorative frames - Roman blinds - Panel curtains - Curtains - Cushions

Composition 100% FR polyester

Weight 260 g/m² 0 g/ml Width 280 cm

Fabric direction Room High Direction Fitting ↔ cm ↓ cm

Maintenance advice

Labels France Terre Textile (R016)

Certifications OEKO-TEX STANDARD 100 (CQ 1006/1)

Minimum order 1 linear(s) meter(s)

Technical characteristics

Flame retardant	M1 / B1 / IMO PASS	
Optical index	Light reflexion : 59 %	
	Light absorption : 5 %	
	Light transmission : 36 %	
Thermal index	Solar reflexion : 58 %	
	Solar absorption : 7 %	
	Solar transmission : 35 %	
	UV transmission : 22 %	
	Gtot : Gt 39 % Fc 65 %	
Resilience	Lightfastness (units Class/8) 6	
	Pilling 1-2	
	Dimentional Stability (%)	Warp -2
		Weft -0.5
	Martindale (Cycles) 30000	
	Breaking Elongation	Warp 25
		Weft 25
	Breaking load (daN)	Warp 140
		Weft 100



DRAPILUX GmbH - Hofenstraße 3, 77694 Kehl - Deutschland

Non-contractual photos and colors - Indicative fitting - Fitting may vary depending on supports selected