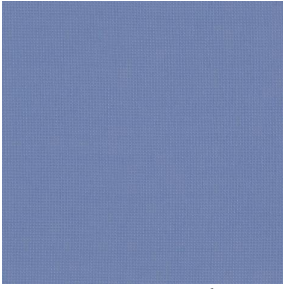
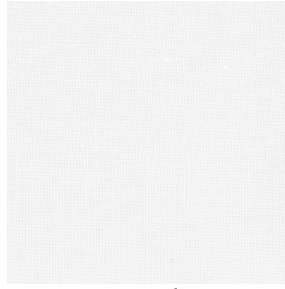


ETAMINE



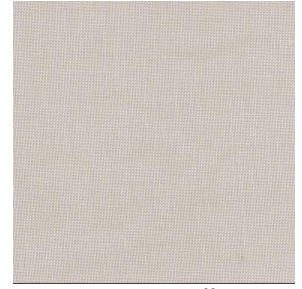
ETAMINE Naval 17



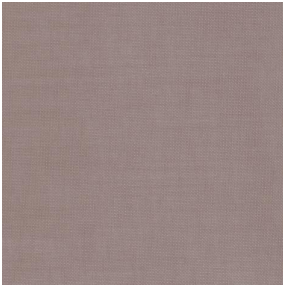
ETAMINE Blanc 01



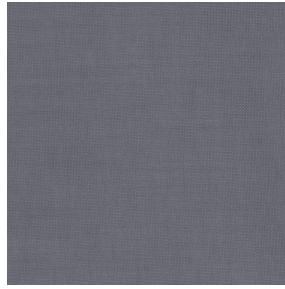
ETAMINE Champagne
02



ETAMINE Ficelle 09



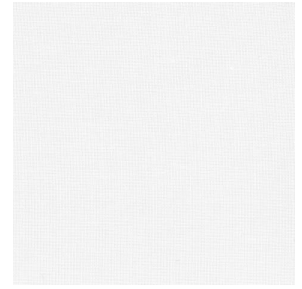
ETAMINE Taupe 95



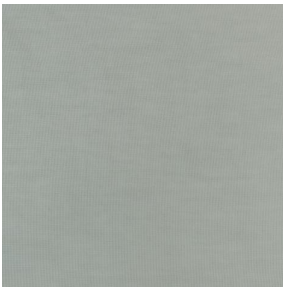
ETAMINE Anthracite 38



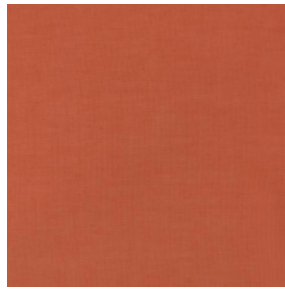
ETAMINE Noir 12



ETAMINE BPI 00



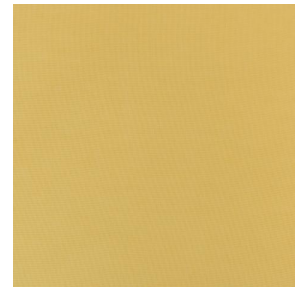
ETAMINE Ardoise 08



ETAMINE Safran 49



ETAMINE Olive 61



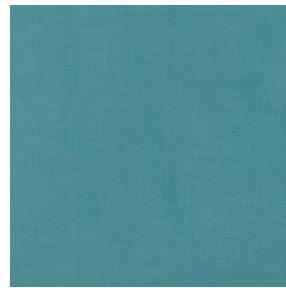
ETAMINE Agrume 69



ETAMINE Beige 90



ETAMINE Indigo 144



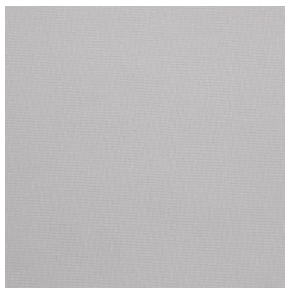
ETAMINE Pacifique 54



ETAMINE Hortensia 134



ETAMINE Cactus 36

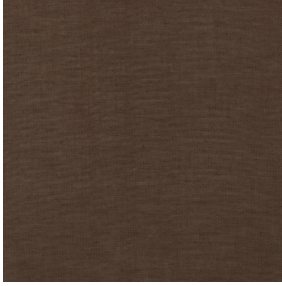


ETAMINE Perle 96

drapilux
By Sotexpro

DRAPILUX GmbH - Hafenstraße 3, 77694 Kehl - Deutschland

Non-contractual photos and colors - Indicative fitting - Fitting may vary depending on support selected



ETAMINE Chocolat 70

This light and airy sheer curtain comes in several plain colours.

Technical properties



Flame retardant



Sheer

Applications Roman blinds - Panel curtains - Curtains

Composition 100% FR polyester

Weight 95 g/m² Width 300 cm

Fabric direction Room high or standard direction Fitting ↔ cm ↓ cm

Maintenance advice     

Labels France Terre Textile (R016)

Certifications OEKO-TEX STANDARD 100 (CQ 1006/1)

Minimum order 1 linear(s) meter(s)

Technical characteristics

Flame retardant	M1 / B1 / IMO PASS / UNI 8456 / 9174 Classe Uno
Optical index	Light reflexion : 2 % Light absorption : 77 % Light transmission : 21 %
Transparent veil	Yes
Thermal index	Solar reflexion : 21 % Solar absorption : 42 % Solar transmission : 37 % UV transmission : 24 % Gtot : Gt 47 % Fc 79 %
Resilience	Lightfastness (units Class/8) 4 Dimensional Stability (%) Warp 0 Weft 0 Breaking Elongation Warp 46 Weft 13 Breaking load (daN) Warp 41 Weft 40