

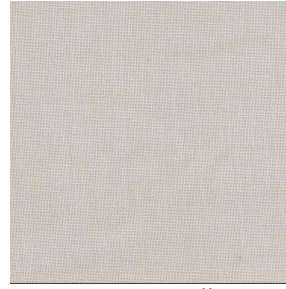
# ETAMINE



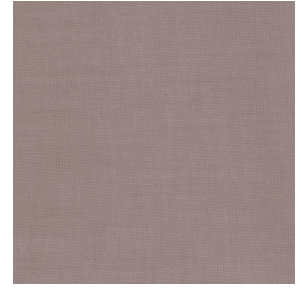
ETAMINE Naval 17



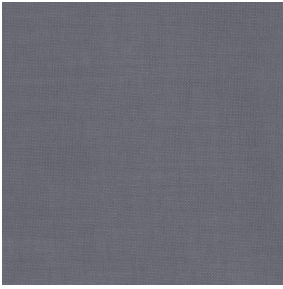
ETAMINE Blanc 01



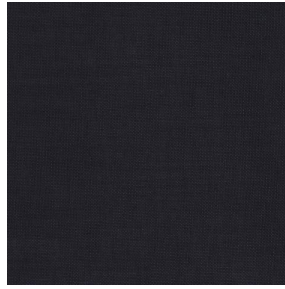
ETAMINE Ficelle 09



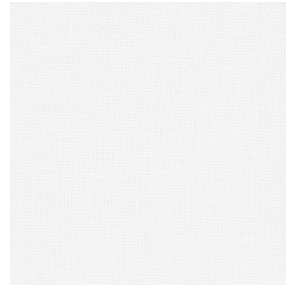
ETAMINE Taupe 95



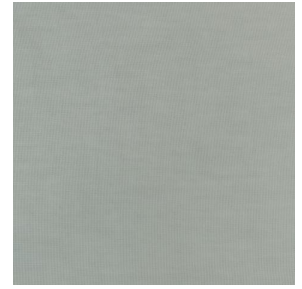
ETAMINE Anthracite 38



ETAMINE Noir 12



ETAMINE BPI 00



ETAMINE Ardoise 08



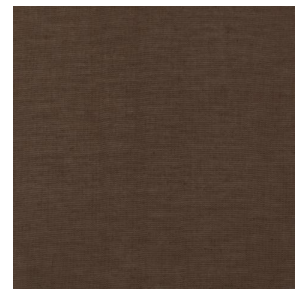
ETAMINE Safran 49



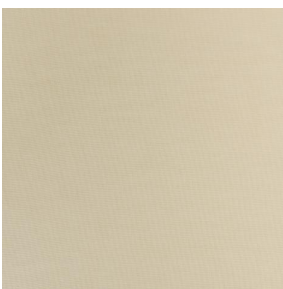
ETAMINE Olive 61



ETAMINE Agrume 69



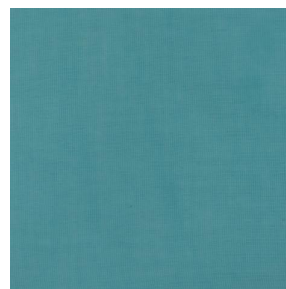
ETAMINE Chocolat 70



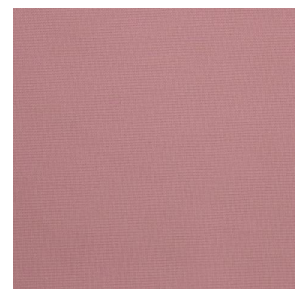
ETAMINE Beige 90



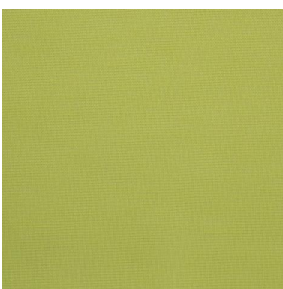
ETAMINE Indigo 144



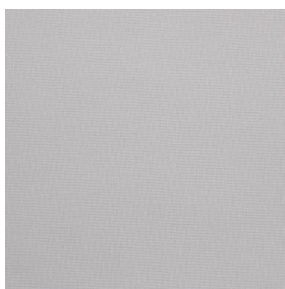
ETAMINE Pacifique 54



ETAMINE Hortensia 134



ETAMINE Cactus 36

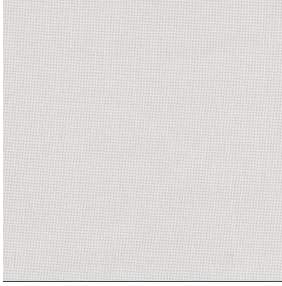


ETAMINE Perle 96

**drapilux**  
By Sotexpro

DRAPILUX GmbH - Hafenstraße 3, 77694 Kehl - Deutschland

Non-contractual photos and colors - Indicative fitting - Fitting may vary depending on support selected



# ETAMINE Champagne 02

This light and airy sheer curtain comes in several plain colours.

## Technical properties



Flame retardant



Sheer

Applications Roman blinds - Panel curtains - Curtains

Composition 100% FR polyester

Weight 95 g/m<sup>2</sup> Width 300 cm

Fabric direction Room high or standard direction Fitting ↔ cm ↓ cm

Maintenance advice     

Labels France Terre Textile (R016)

Certifications OEKO-TEX STANDARD 100 (CQ 1006/1)

Minimum order 1 linear(s) meter(s)

## Technical characteristics

Flame retardant	M1 / B1 / IMO PASS / UNI 8456 / 9174 Classe Uno	
Optical index	Light reflexion :	42 %
	Light absorption :	4 %
	Light transmission :	54 %
Transparent veil	Yes	
Thermal index	Solar reflexion :	43 %
	Solar absorption :	3 %
	Solar transmission :	54 %
	UV transmission :	52 %
	Gtot :	Gt 44 % Fc 75 %
Resilience	Lightfastness (units Class/8)	6
	Dimensional Stability (%)	
	Warp	0
	Weft	0
	Breaking Elongation	
	Warp	46
	Weft	13
	Breaking load (daN)	
	Warp	41
	Weft	40

**drapilux**  
By Sotexpro

DRAPILUX GmbH - Hafenstraße 3, 77694 Kehl - Deutschland

Non-contractual photos and colors - Indicative fitting - Fitting may vary depending on support selected