

ETAMINE



ETAMINE Naval 17



ETAMINE Blanc 01



ETAMINE Champagne
02



ETAMINE Ficelle 09



ETAMINE Taupe 95



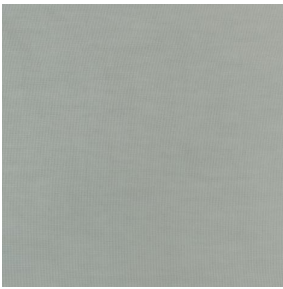
ETAMINE Anthracite 38



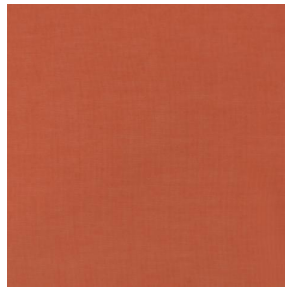
ETAMINE Noir 12



ETAMINE BPI 00



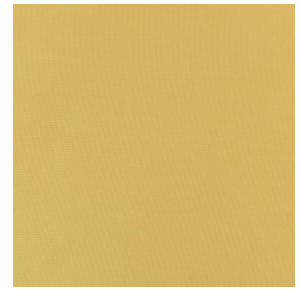
ETAMINE Ardoise 08



ETAMINE Safran 49



ETAMINE Olive 61



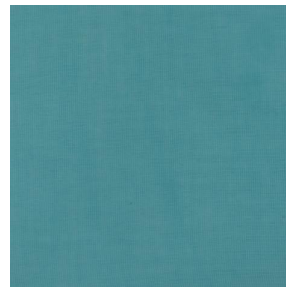
ETAMINE Agrume 69



ETAMINE Chocolat 70



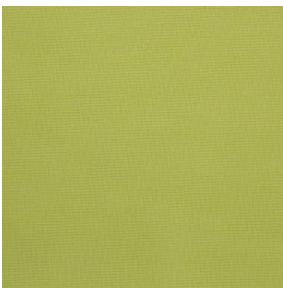
ETAMINE Indigo 144



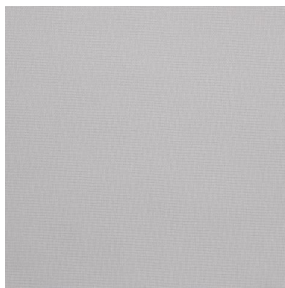
ETAMINE Pacifique 54



ETAMINE Hortensia 134



ETAMINE Cactus 36



ETAMINE Perle 96

drapilux
By Sotexpro

DRAPILUX GmbH - Hafenstraße 3, 77694 Kehl - Deutschland

Non-contractual photos and colors - Indicative fitting - Fitting may vary depending on support selected



ETAMINE Beige 90

This light and airy sheer curtain comes in several plain colours.

Technical properties



Flame retardant



Sheer

Applications Roman blinds - Panel curtains - Curtains

Composition 100% FR polyester

Weight 95 g/m² Width 300 cm

Fabric direction Room high or standard direction Fitting ↔ cm ↓ cm

Maintenance advice     

Labels France Terre Textile (R016)

Certifications OEKO-TEX STANDARD 100 (CQ 1006/1)

Minimum order 1 linear(s) meter(s)

Technical characteristics

| | | |
|------------------|---|-----------------|
| Flame retardant | M1 / B1 / IMO PASS / UNI 8456 / 9174 Classe Uno | |
| Optical index | Light reflexion : | 33 % |
| | Light absorption : | 16 % |
| | Light transmission : | 51 % |
| Transparent veil | Yes | |
| Thermal index | Solar reflexion : | 34 % |
| | Solar absorption : | 14 % |
| | Solar transmission : | 52 % |
| | UV transmission : | 41 % |
| | Gtot : | Gt 47 % Fc 79 % |
| Resilience | Lightfastness (units Class/8) | 4 |
| | Dimensional Stability (%) | |
| | Warp | 0 |
| | Weft | 0 |
| | Breaking Elongation | |
| | Warp | 46 |
| | Weft | 13 |
| | Breaking load (daN) | |
| | Warp | 41 |
| | Weft | 40 |