

# ETAMINE



ETAMINE Naval 17



ETAMINE Blanc 01



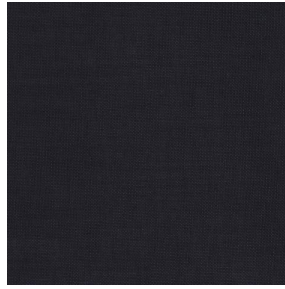
ETAMINE Champagne  
02



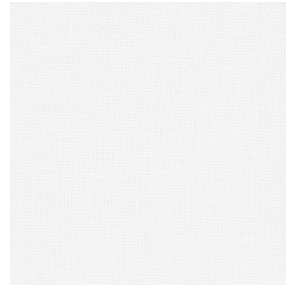
ETAMINE Ficelle 09



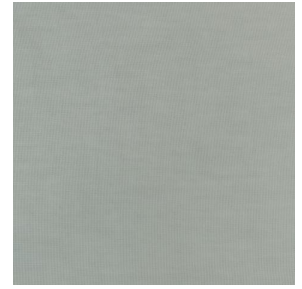
ETAMINE Taupe 95



ETAMINE Noir 12



ETAMINE BPI 00



ETAMINE Ardoise 08



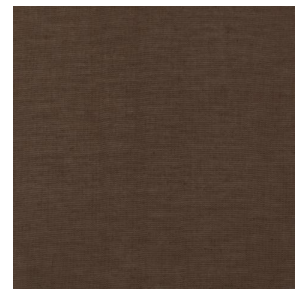
ETAMINE Safran 49



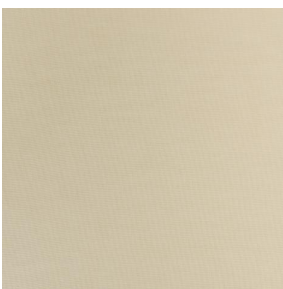
ETAMINE Olive 61



ETAMINE Agrume 69



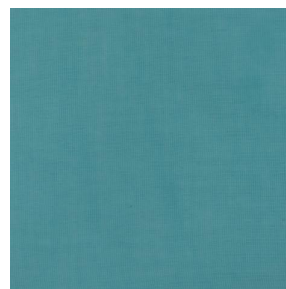
ETAMINE Chocolat 70



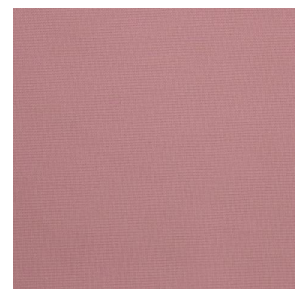
ETAMINE Beige 90



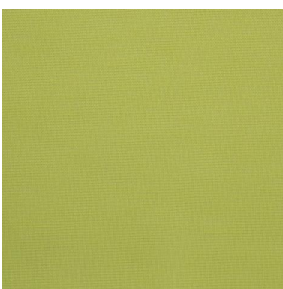
ETAMINE Indigo 144



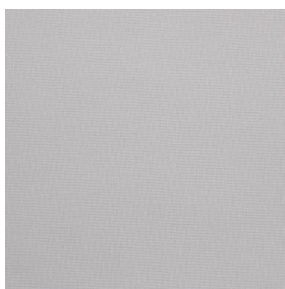
ETAMINE Pacifique 54



ETAMINE Hortensia 134



ETAMINE Cactus 36

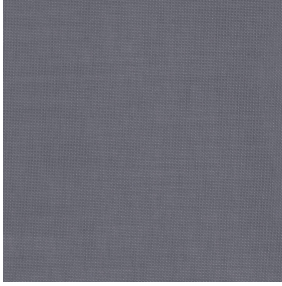


ETAMINE Perle 96

**drapilux**  
By Sotexpro

DRAPILUX GmbH - Hafenstraße 3, 77694 Kehl - Deutschland

Non-contractual photos and colors - Indicative fitting - Fitting may vary depending on support selected



# ETAMINE Anthracite 38

This light and airy sheer curtain comes in several plain colours.

## Technical properties



Flame retardant



Sheer

Applications Roman blinds - Panel curtains - Curtains

Composition 100% FR polyester

Weight 95 g/m<sup>2</sup> Width 300 cm

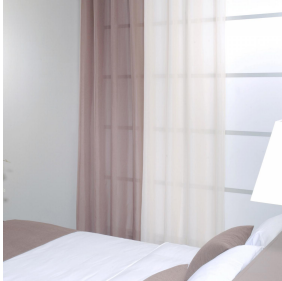
Fabric direction Room high or standard direction Fitting ↔ cm ↓ cm

Maintenance advice     

Labels France Terre Textile (R016)

Certifications OEKO-TEX STANDARD 100 (CQ 1006/1)

Minimum order 1 linear(s) meter(s)



## Technical characteristics

Flame retardant	M1 / B1 / IMO PASS / UNI 8456 / 9174 Classe Uno
Optical index	Light reflexion : 2 %
	Light absorption : 77 %
	Light transmission : 21 %
Transparent veil	Yes
Thermal index	Solar reflexion : 21 %
	Solar absorption : 42 %
	Solar transmission : 37 %
	UV transmission : 24 %
	Gtot : Gt 47 % Fc 79 %
Resilience	Lightfastness (units Class/8) 4
	Dimensional Stability (%)
	Warp 0
	Weft 0
	Breaking Elongation
	Warp 46
	Weft 13
	Breaking load (daN)
	Warp 41
	Weft 40