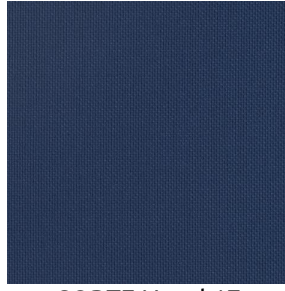


# CORTE



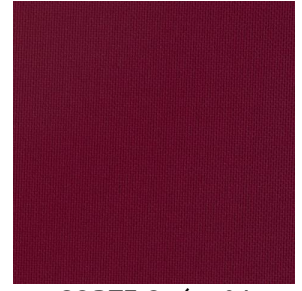
CORTE Eucalyptus 117



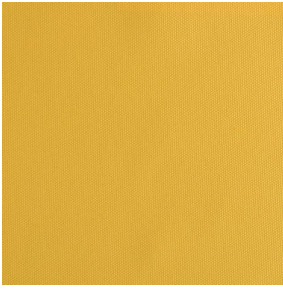
CORTE Naval 17



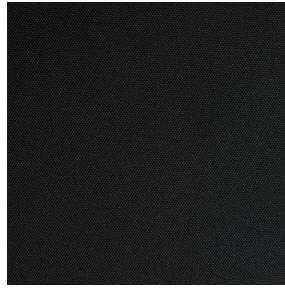
CORTE Orgeat 127



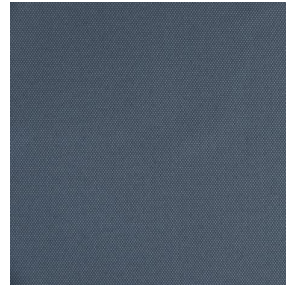
CORTE Opéra 04



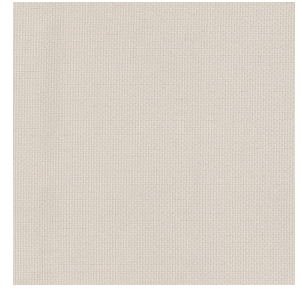
CORTE Miel 07



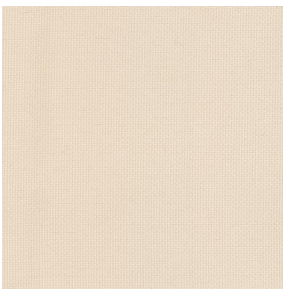
CORTE Noir 10



CORTE Anthracite 38



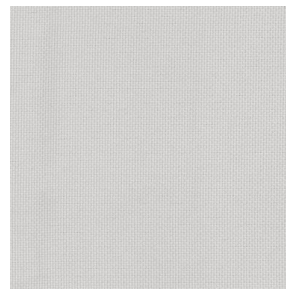
CORTE Mastic 48



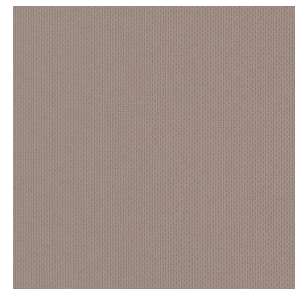
CORTE Ivoire 02



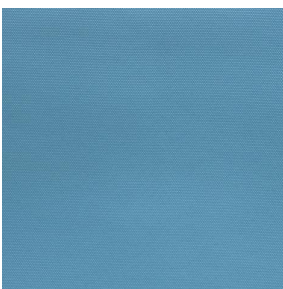
CORTE Blanc 01



CORTE Souris 31



CORTE Taupe 95



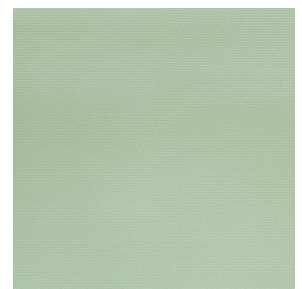
CORTE Céladon 135



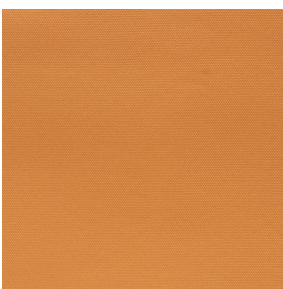
CORTE Faïence 149



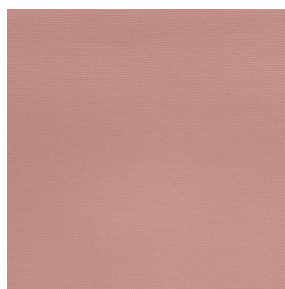
CORTE Indigo 144



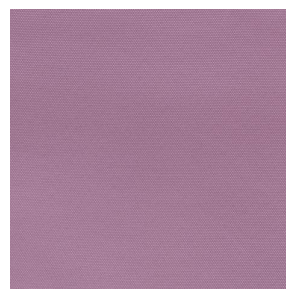
CORTE Absinthe 132



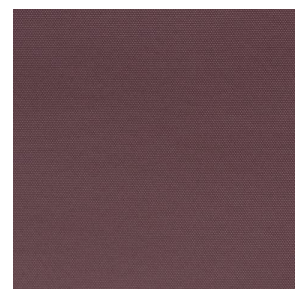
CORTE Ocre 03



CORTE Saumon 143



CORTE Hortensia 134

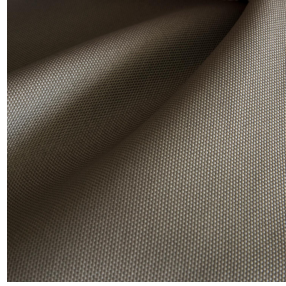
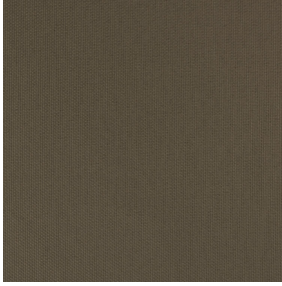


CORTE Cacao 168

**drapilux**  
By Sotexpro

DRAPILUX GmbH - Hofenstraße 3, 77694 Kehl - Deutschland

Non-contractual photos and colors - Indicative fitting - Fitting may vary depending on support selected



# CORTE Moka 13

This plain light-filtering fabric is available in several colours.

## Technical properties



Flame retardant



Thermal








Acoustic

**Applications** Roman blinds - Panel curtains - Bedspreads - Valences - Seating - Bed runners - Curtains - Cushions - Decorative frames

**Composition** 100% FR polyester

**Weight** 230 g/m<sup>2</sup> **Width** 140 cm / 280 cm

**Fabric direction** Room high or standard direction **Fitting** ↔ cm ↓ cm

**Maintenance advice**     

**Labels** France Terre Textile (R016)

**Certifications** OEKO-TEX STANDARD 100 (CQ 1006/1)

**Minimum order** 1 linear(s) meter(s)

## Technical characteristics

Flame retardant	M1 / BS 5867 TYPE C / B1 / IMO PASS / UNI 8456 / 9174 Classe Uno
Acoustic	<p>Noise reduction coefficient (NRC) : <b>0.90</b></p> <p>Weighted sound absorption coefficient (a<sub>w</sub>) : <b>0.85</b></p> <p>Acoustic absorption class (a<sub>w</sub>) : <b>B</b></p>
Optical index	<p>Light reflexion : <b>36 %</b></p> <p>Light absorption : <b>58 %</b></p> <p>Light transmission : <b>6 %</b></p>
Thermal index	<p>Solar reflexion : <b>50 %</b></p> <p>Solar absorption : <b>33 %</b></p> <p>Solar transmission : <b>17 %</b></p> <p>UV transmission : <b>-2 %</b></p> <p>Gtot : <b>Gt 41 % Fc 69 %</b></p>
Resilience	<p>Lightfastness (units Class/8) <b>5</b></p> <p>Pilling <b>4</b></p> <p>Dimensional Stability (%)</p> <p>    Warp <b>-2</b></p> <p>    Weft <b>-0.5</b></p> <p>Martindale (Cycles) <b>24998</b></p> <p>Breaking Elongation</p> <p>    Warp <b>34</b></p> <p>    Weft <b>28</b></p> <p>Breaking load (daN)</p> <p>    Warp <b>130</b></p> <p>    Weft <b>90</b></p>



DRAPILUX GmbH - Hafenstraße 3, 77694 Kehl - Deutschland

Non-contractual photos and colors - Indicative fitting - Fitting may vary depending on support selected