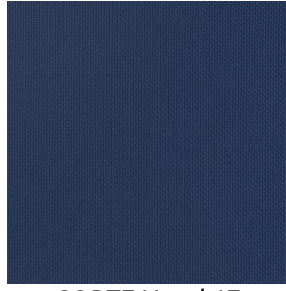


CORTE



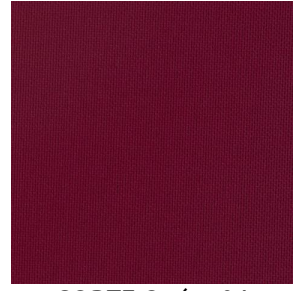
CORTE Eucalyptus 117



CORTE Naval 17



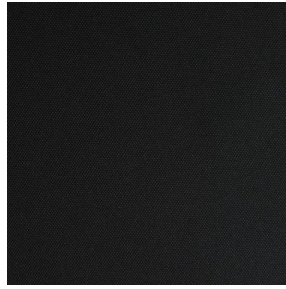
CORTE Orgeat 127



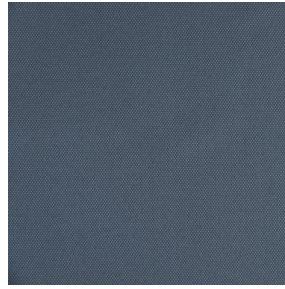
CORTE Opéra 04



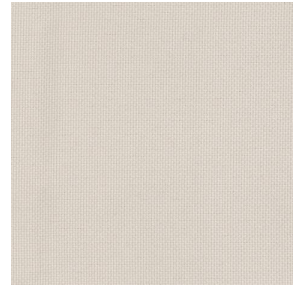
CORTE Miel 07



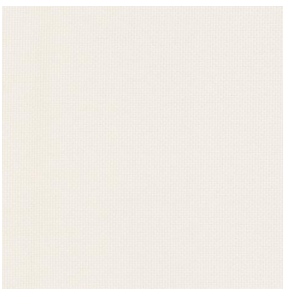
CORTE Noir 10



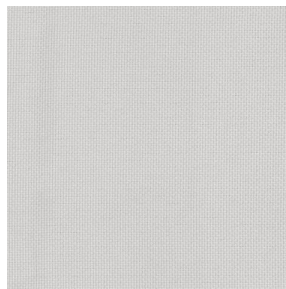
CORTE Anthracite 38



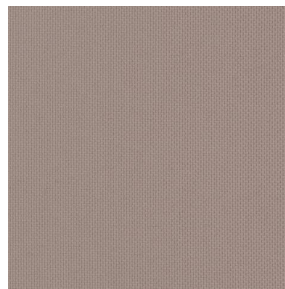
CORTE Mastic 48



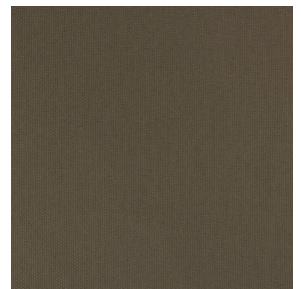
CORTE Blanc 01



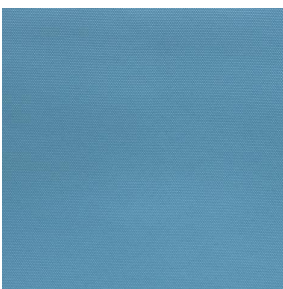
CORTE Souris 31



CORTE Taupe 95



CORTE Moka 13



CORTE Céladon 135



CORTE Faïence 149



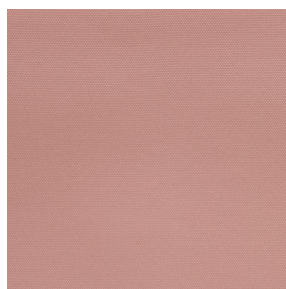
CORTE Indigo 144



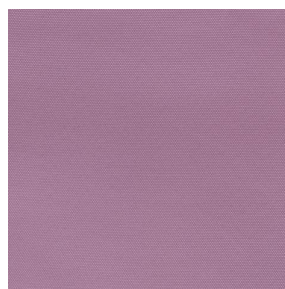
CORTE Absinthe 132



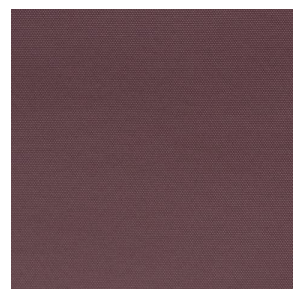
CORTE Ocre 03



CORTE Saumon 143



CORTE Hortensia 134

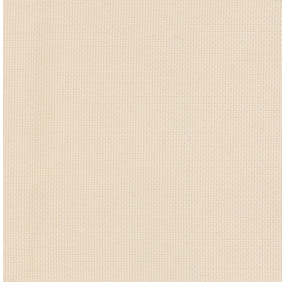


CORTE Cacao 168

drapilux
By Sotexpro

DRAPILUX GmbH - Hofenstraße 3, 77694 Kehl - Deutschland

Non-contractual photos and colors - Indicative fitting - Fitting may vary depending on support selected



CORTE Ivoire 02

This plain light-filtering fabric is available in several colours.

Technical properties



Flame retardant



Thermal



Acoustic

Applications Roman blinds - Panel curtains - Bedspreads - Valences - Seating - Bed runners - Curtains - Cushions - Decorative frames

Composition 100% FR polyester

Weight 230 g/m² **Width** 140 cm / 280 cm

Fabric direction Room high or standard direction **Fitting** ↔ cm ↓ cm

Maintenance advice

Labels France Terre Textile (R016)

Certifications OEKO-TEX STANDARD 100 (CQ 1006/1)

Minimum order 1 linear(s) meter(s)

Technical characteristics

Flame retardant

M1 / BS 5867 TYPE C / B1 / IMO PASS / UNI 8456 / 9174 Classe Uno

Acoustic

Noise reduction coefficient (NRC) : **0.90**

Weighted sound absorption coefficient (a_w) : **0.85**

Acoustic absorption class (a_w) : **B**

Optical index

Light reflexion : **65 %**

Light absorption : **15 %**

Light transmission : **20 %**

Thermal index

Solar reflexion : **63 %**

Solar absorption : **15 %**

Solar transmission : **22 %**

UV transmission : **3 %**

Gtot : **Gt 37 % Fc 62 %**

Resilience

Lightfastness (units Class/8) **5**

Pilling **4**

Dimensional Stability (%)

Warp **-2**

Weft **-0.5**

Martindale (Cycles) **25000**

Breaking Elongation

Warp **34**

Weft **28**

Breaking load (daN)

Warp **130**

Weft **90**

drapilux
By Sotexpro

DRAPILUX GmbH - Hafenstraße 3, 77694 Kehl - Deutschland

Non-contractual photos and colors - Indicative fitting - Fitting may vary depending on support selected