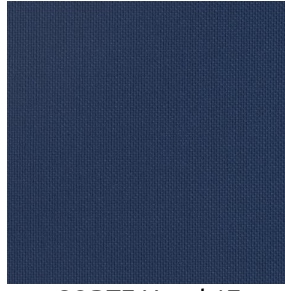


# CORTE



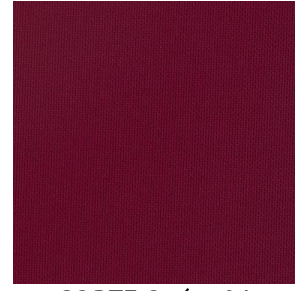
CORTE Eucalyptus 117



CORTE Naval 17



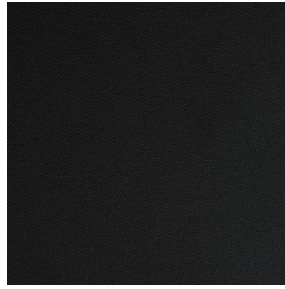
CORTE Orgeat 127



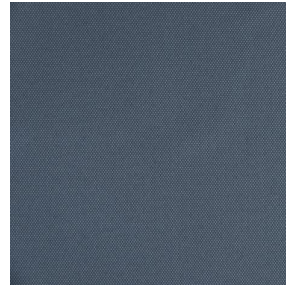
CORTE Opéra 04



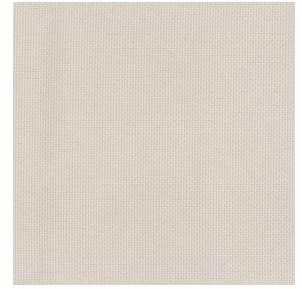
CORTE Miel 07



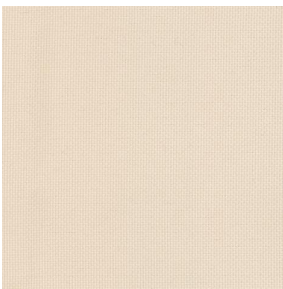
CORTE Noir 10



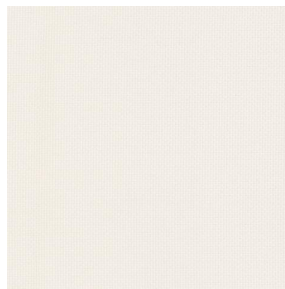
CORTE Anthracite 38



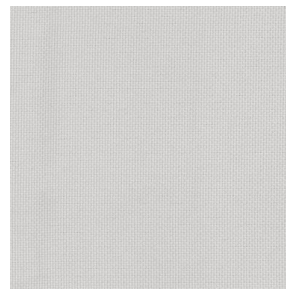
CORTE Mastic 48



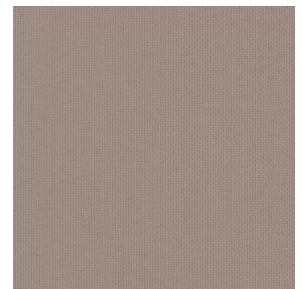
CORTE Ivoire 02



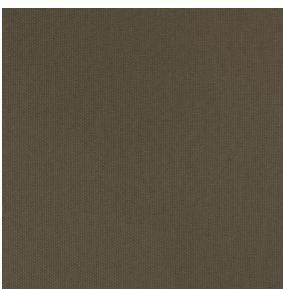
CORTE Blanc 01



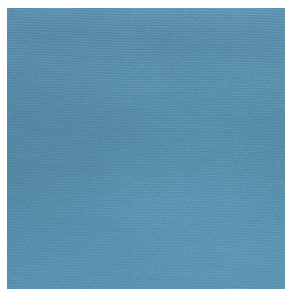
CORTE Souris 31



CORTE Taupe 95



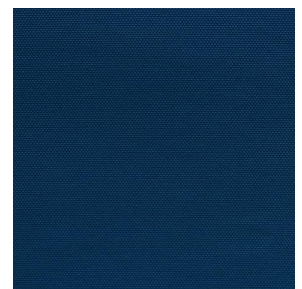
CORTE Moka 13



CORTE Céladon 135



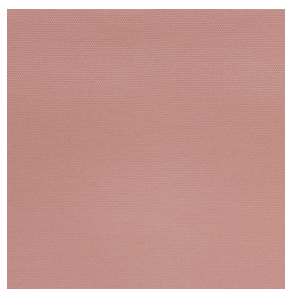
CORTE Faïence 149



CORTE Indigo 144



CORTE Ocre 03



CORTE Saumon 143



CORTE Hortensia 134

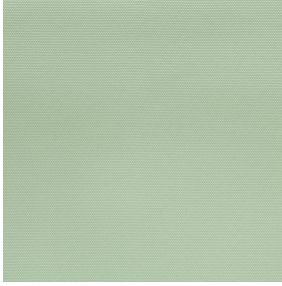


CORTE Cacao 168

**drapilux**  
By Sotexpro

DRAPILUX GmbH - Hofenstraße 3, 77694 Kehl - Deutschland

Non-contractual photos and colors - Indicative fitting - Fitting may vary depending on support selected



# CORTE Absinthe 132

This plain light-filtering fabric is available in several colours.

## Technical properties



Flame retardant



Thermal





Acoustic

**Applications** Roman blinds - Panel curtains - Bedspreads - Valences - Seating - Bed runners - Curtains - Cushions - Decorative frames

**Composition** 100% FR polyester

**Weight** 230 g/m<sup>2</sup> **Width** 140 cm / 280 cm

**Fabric direction** Room high or standard direction **Fitting** ↔ cm ↓ cm

**Maintenance advice**     

**Labels** France Terre Textile (R016)

**Certifications** OEKO-TEX STANDARD 100 (CQ 1006/1)

**Minimum order** 1 linear(s) meter(s)

## Technical characteristics

Flame retardant	M1 / BS 5867 TYPE C / B1 / IMO PASS / UNI 8456 / 9174 Classe Uno
Acoustic	Noise reduction coefficient (NRC) : <b>0.90</b> Weighted sound absorption coefficient (a <sub>w</sub> ) : <b>0.85</b> Acoustic absorption class (a <sub>w</sub> ) : <b>B</b>
Optical index	Light reflexion : <b>65 %</b> Light absorption : <b>15 %</b> Light transmission : <b>20 %</b>
Thermal index	Solar reflexion : <b>63 %</b> Solar absorption : <b>15 %</b> Solar transmission : <b>22 %</b> UV transmission : <b>3 %</b> Gtot : <b>Gt 37 % Fc 62 %</b>
Resilience	Lightfastness (units Class/8) <b>5</b> Pilling <b>4</b> Dimensional Stability (%) Warp <b>-2</b> Weft <b>-0.5</b> Martindale (Cycles) <b>25000</b> Breaking Elongation Warp <b>34</b> Weft <b>28</b> Breaking load (daN) Warp <b>130</b> Weft <b>90</b>

**drapilux**  
By Sotexpro

DRAPILUX GmbH - Hafenstraße 3, 77694 Kehl - Deutschland

Non-contractual photos and colors - Indicative fitting - Fitting may vary depending on support selected