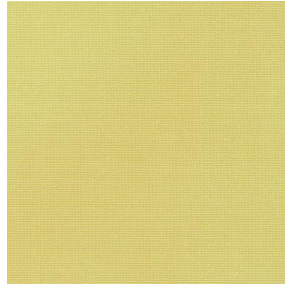


COLLEGE



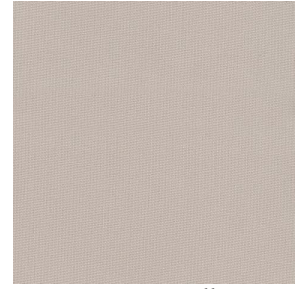
COLLEGE Naval 17



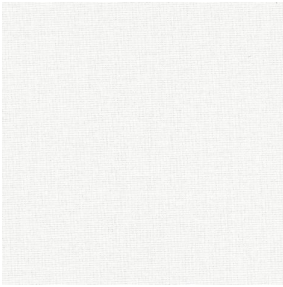
COLLEGE Anis 62



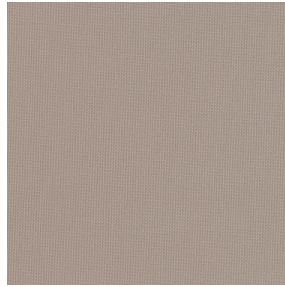
COLLEGE Poussin 20



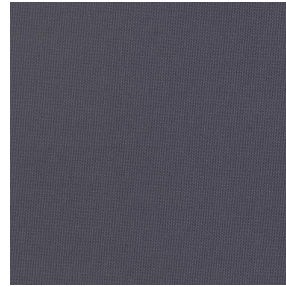
COLLEGE Ficelle 09



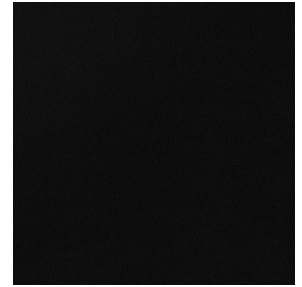
COLLEGE Nacre 04



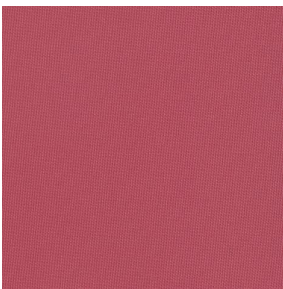
COLLEGE Naturel 26



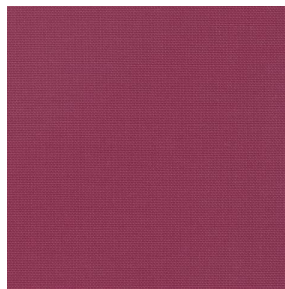
COLLEGE acier 18



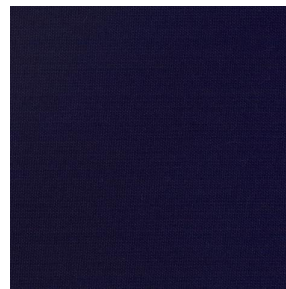
COLLEGE Noir 10



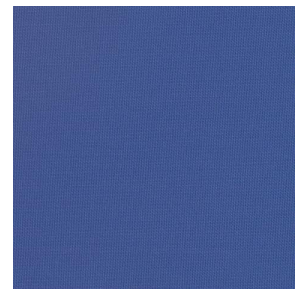
COLLEGE Corail 14



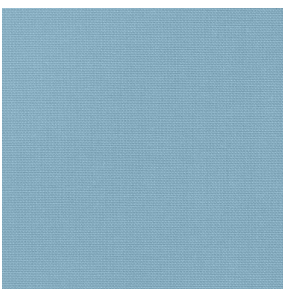
COLLEGE Framboise 81



COLLEGE Marine 25



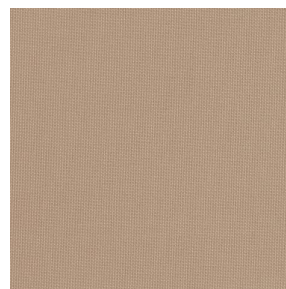
COLLEGE Gentiane 16



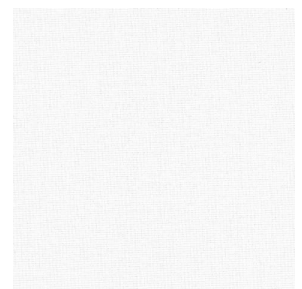
COLLEGE Turquoise 53



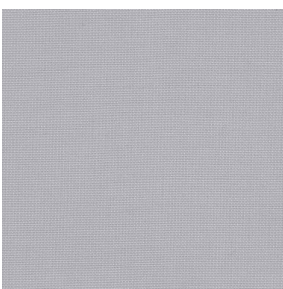
COLLEGE Vert 24



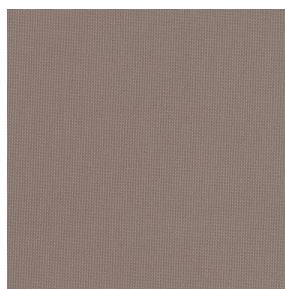
COLLEGE Mastic 48



COLLEGE Blanc 01



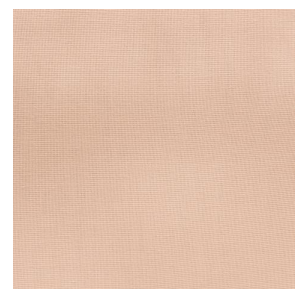
COLLEGE Souris 31



COLLEGE Moka 13



COLLEGE Mordoré 133



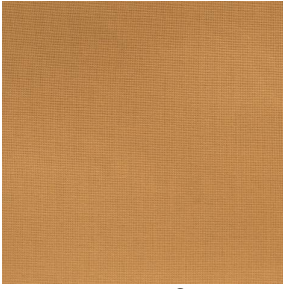
COLLEGE Pêche 52

drapilux
By Sotexpro

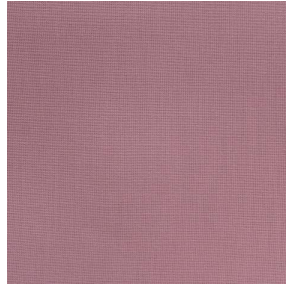
DRAPILUX GmbH - Hafenstraße 3, 77694 Kehl - Deutschland

Non-contractual photos and colors - Indicative fitting - Fitting may vary depending on support selected

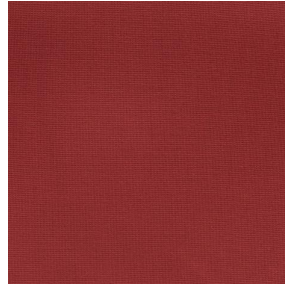
COLLEGE



COLLEGE Safran 49



COLLEGE Havane 44



COLLEGE Sanguine 05



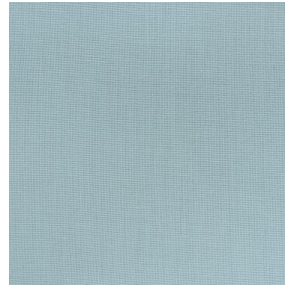
COLLEGE Evêque 154



COLLEGE Bergamotte
121



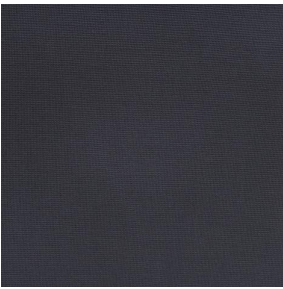
COLLEGE Olive 61



COLLEGE Absinthe 132



COLLEGE Indigo 144



COLLEGE Titanium 98



COLLEGE Paille 83

This light-filtering fabric is available in a range of several colours, providing you with some great decoration possibilities.

Technical properties



Flame retardant






Thermal

Applications Curtains - Decorative frames - Roman blinds - Panel curtains

Composition 100% FR polyester

Weight 200 g/m² **Width** 140 cm / 280 cm

Fabric direction Room high or standard direction **Fitting** ↔ cm ↓ cm

Maintenance advice     

Labels France Terre Textile (R016)

Certifications OEKO-TEX STANDARD 100 (CQ 1006/1)

Minimum order 1 linear(s) meter(s)

Technical characteristics

Flame retardant	M1 / EN13773 : 2003 Class 1 / B1 / IMO PASS / UNI 8456 / 9174 Classe Uno	
Optical index	Light reflexion :	57 %
	Light absorption :	15 %
	Light transmission :	28 %
Thermal index	Solar reflexion :	56 %
	Solar absorption :	14 %
	Solar transmission :	30 %
	UV transmission :	12 %
	Gtot :	Gt 39 % Fc 66 %
Resilience	Lightfastness (units Class/8)	6
	Dimensional Stability (%)	
	Warp	-2.5
	Weft	-0.5
	Breaking Elongation	
	Warp	23
	Weft	24
	Breaking load (daN)	
Warp	93	
Weft	120	

drapilux
By Sotexpro

DRAPILUX GmbH - Hafenstraße 3, 77694 Kehl - Deutschland

Non-contractual photos and colors - Indicative fitting - Fitting may vary depending on support selected