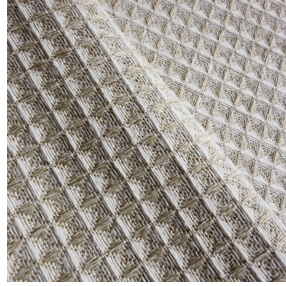
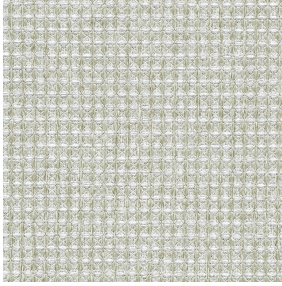


BRUNIEN SIENTA



BRUNIEN SIENTA Ficelle
09



BRUNIEN SIENTA Naturel 26

Textured fabric, inspired by ancient, rustic styles and traditional honeycomb weaving.

Technical properties



Flame retardant



Recycled fabrics

Applications Roman blinds - Panel curtains - Curtains - Cushions

Composition 40% recycled polyester FR / 60% polyester FR

Weight 330 g/m² Width 290 cm

Fabric direction Room high or standard direction Fitting ↔ cm ↓ cm

Maintenance advice     

Labels France Terre Textile (R016)

Certifications OEKO-TEX STANDARD 100 Recyclé (CQ 1006/2)

Minimum order 1 linear(s) meter(s)

Technical characteristics

Flame retardant

M1 / IMO PASS

Resilience

Lightfastness (units Class/8)

5

Pilling

4-5

Dimensional Stability (%)

Warp

1

Weft

1

Martindale (Cycles)

35000

Breaking Elongation

Warp

27

Weft

22

Breaking load (daN)

Warp

110

Weft

100

drapilux
By Sotexpro

DRAPILUX GmbH - Hafenstraße 3, 77694 Kehl - Deutschland

Non-contractual photos and colors - Indicative fitting - Fitting may vary depending on support selected