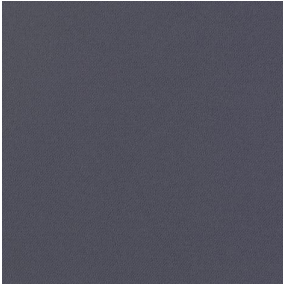
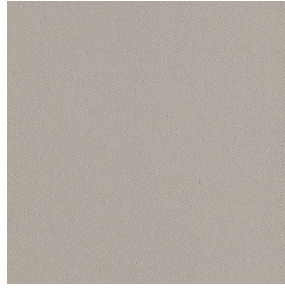


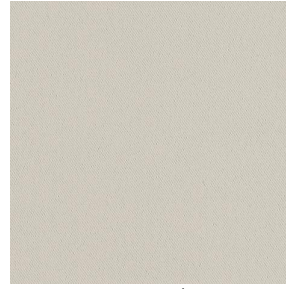
# BORNEO



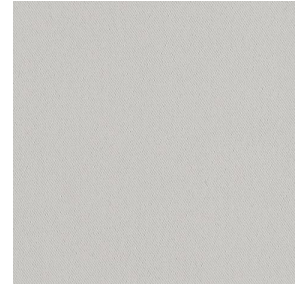
BORNEO Acier 18



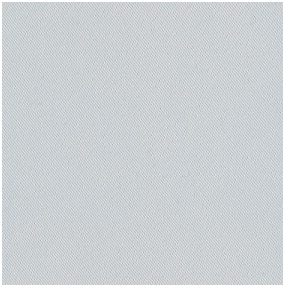
BORNEO Mastic 48



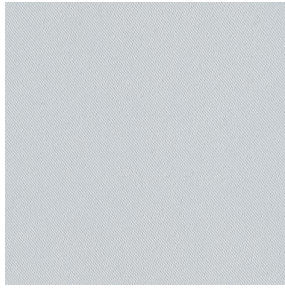
BORNEO Crème 02



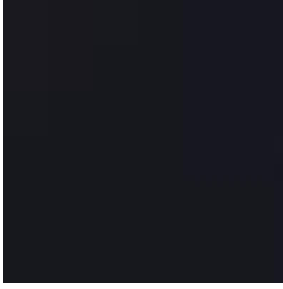
BORNEO Gris 97



BORNEO Blanc 01



BORNEO BPI 00



# BORNEO Noir 10

This is a heavy dimout and 99% blackout fabric,

## Technical properties



Flame retardant



Thermal



Acoustic

Applications Roman blinds - Curtains

Composition 100% FR polyester

Weight 440 g/m<sup>2</sup> Width 280 cm

Fabric direction Room high or standard direction Fitting ↔ cm ↓ cm

Maintenance advice

Certifications OEKO-TEX STANDARD 100 (CQ 1006/1)

Minimum order 1 linear(s) meter(s)

## Technical characteristics

Flame retardant	M1 / B1 / IMO PASS / UNI 8456 / 9174 Classe Uno
Acoustic	Noise reduction coefficient (NRC) : <b>0.89</b> Weighted sound absorption coefficient (a <sub>w</sub> ) : <b>0.90</b> Acoustic absorption class (a <sub>w</sub> ) : <b>A</b>
Optical index	Light reflexion : <b>14 %</b> Light absorption : <b>86 %</b> Light transmission : <b>0 %</b>
Thermal index	Solar reflexion : <b>33 %</b> Solar absorption : <b>67 %</b> Solar transmission : <b>0 %</b> UV transmission : <b>0 %</b> Gtot : <b>Gt 46 % Fc 78 %</b>
Resilience	Lightfastness (units Class/8) <b>6</b> Dimensional Stability (%) Warp <b>-0.5</b> Weft <b>0</b> Breaking Elongation Warp <b>31</b> Weft <b>0</b> Breaking load (daN) Warp <b>130</b> Weft <b>250</b>

**drapilux**  
By Sotexpro

DRAPILUX GmbH - Hafenstraße 3, 77694 Kehl - Deutschland

Non-contractual photos and colors - Indicative fitting - Fitting may vary depending on support selected