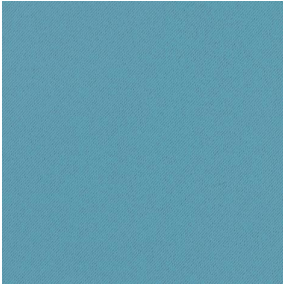
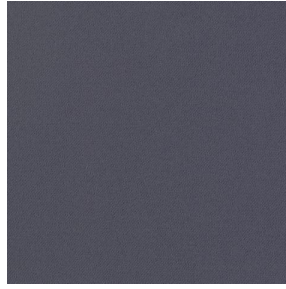


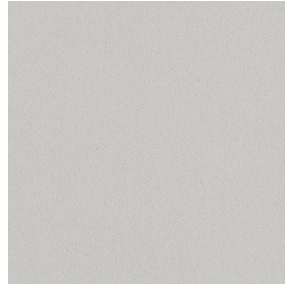
BOREAL



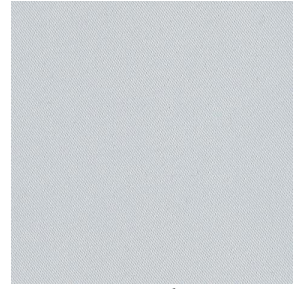
BOREAL Turquoise 53



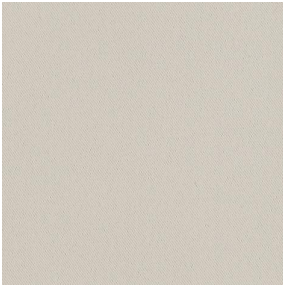
BOREAL Acier 18



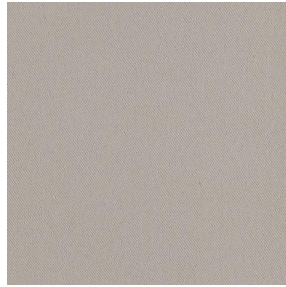
BOREAL Gris 97



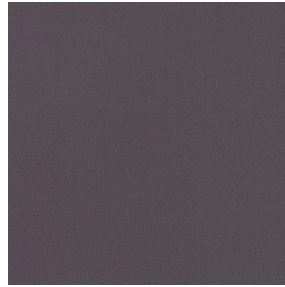
BOREAL Blanc 01



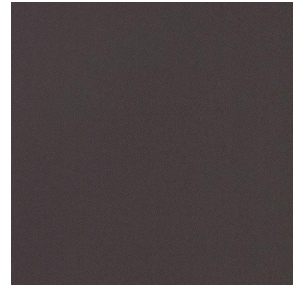
BOREAL Crème 02



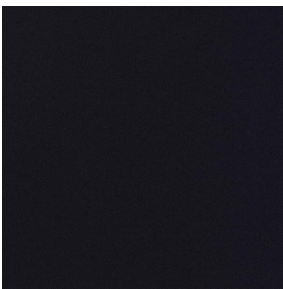
BOREAL Mastic 48



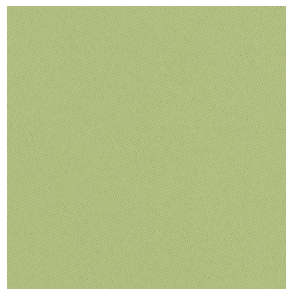
BOREAL Taupe 95



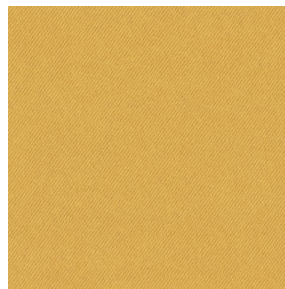
BOREAL Chocolat 70



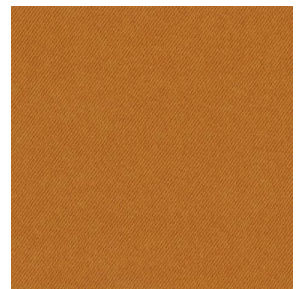
BOREAL Noir 10



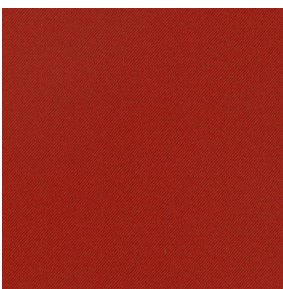
BOREAL Mousse 92



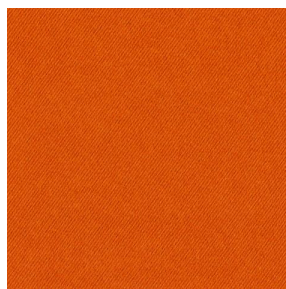
BOREAL Moutarde 47



BOREAL Cuivre 50



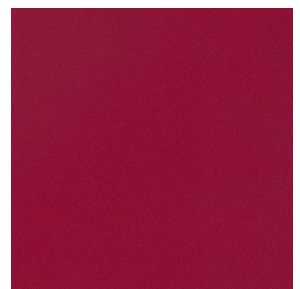
BOREAL Terracotta 65



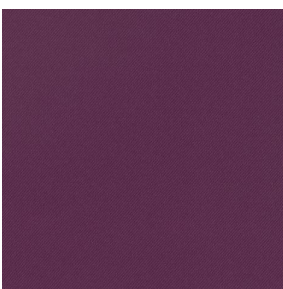
BOREAL Orange 15



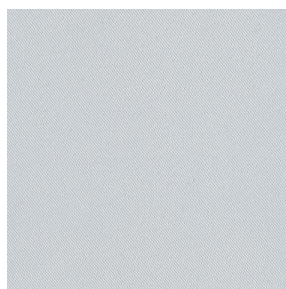
BOREAL Fuchsia 33



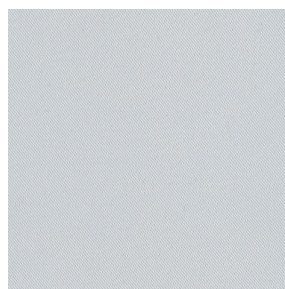
BOREAL Bordeaux 04



BOREAL Prune 84



BOREAL BPI 00



BOREAL BPI 00



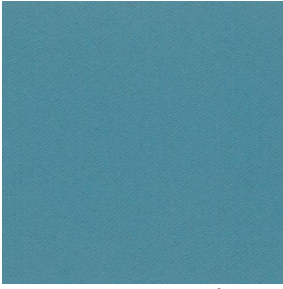
BOREAL cactus 36

drapilux
By Sotexpro

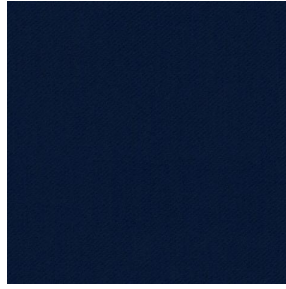
DRAPILUX GmbH - Hofenstraße 3, 77694 Kehl - Deutschland

Non-contractual photos and colors - Indicative fitting - Fitting may vary depending on support selected

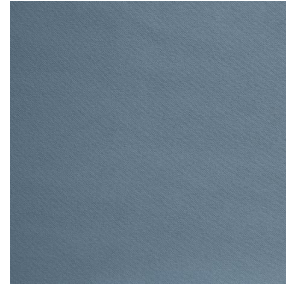
BOREAL



BOREAL emeraude 88



BOREAL nuit 128



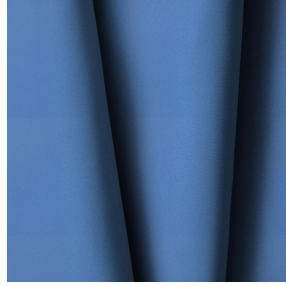
BOREAL Titanium 98



BOREAL Faience 149



BOREAL Indigo 144



BOREAL Océan 91

This plain fabric is available in a range of several colours, suitable for any style and mood.

Technical properties



Flame retardant



Thermal



Acoustic

Applications Roman blinds - Valences - Lining - Bed runners - Curtains

Composition 100% FR polyester

Weight 260 g/m² Width 290 cm

Fabric direction Room high or standard direction Fitting ↔ cm ↓ cm

Maintenance advice

Certifications OEKO-TEX STANDARD 100 (CQ 1006/1)

Minimum order 1 linear(s) meter(s)



Technical characteristics

| | |
|-----------------|--|
| Flame retardant | M1 / B1 / IMO PASS / UNI 8456 / 9174 Classe Uno |
| Acoustic | Noise reduction coefficient (NRC) : 0.88 Weighted sound absorption coefficient (a _w) : 0.90 Acoustic absorption class (a _w) : A |
| Optical index | Light reflexion : 55 % Light absorption : 45 % Light transmission : 0 % |
| Thermal index | Solar reflexion : 53 % Solar absorption : 47 % Solar transmission : 0 % UV transmission : 0 % Gtot : Gt 40 % Fc 67 % |
| Resilience | Lightfastness (units Class/8) 6 Dimensional Stability (%) Warp 0 Weft 0 Breaking Elongation Warp 17 Weft 27 Breaking load (daN) Warp 87 Weft 110 |

drapilux
By Sotexpro

DRAPILUX GmbH - Hafenstraße 3, 77694 Kehl - Deutschland

Non-contractual photos and colors - Indicative fitting - Fitting may vary depending on support selected