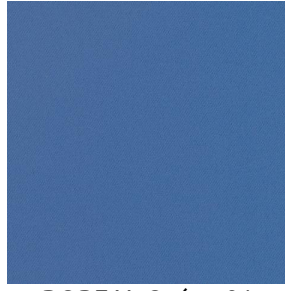


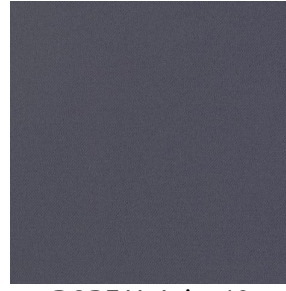
# BOREAL



BOREAL Turquoise 53



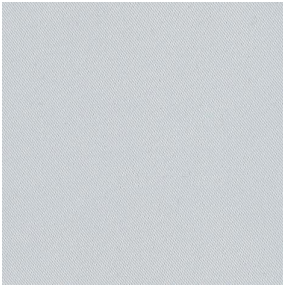
BOREAL Océan 91



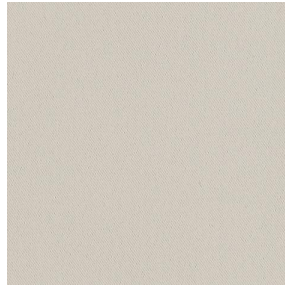
BOREAL Acier 18



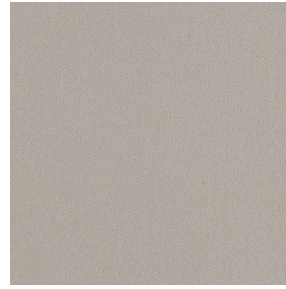
BOREAL Gris 97



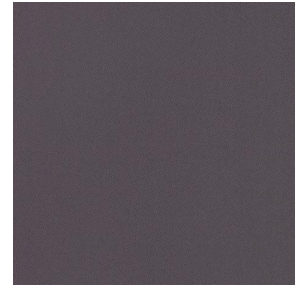
BOREAL Blanc 01



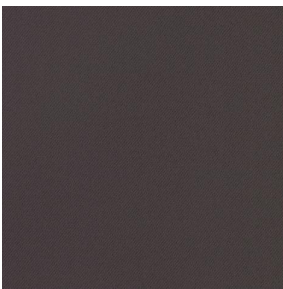
BOREAL Crème 02



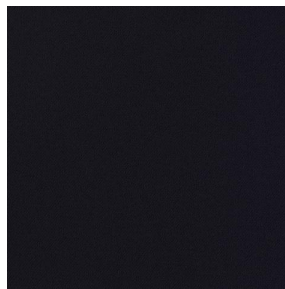
BOREAL Mastic 48



BOREAL Taupe 95



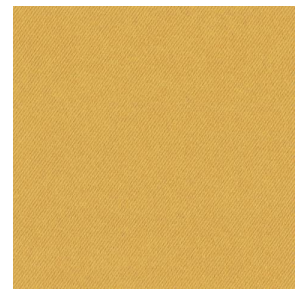
BOREAL Chocolat 70



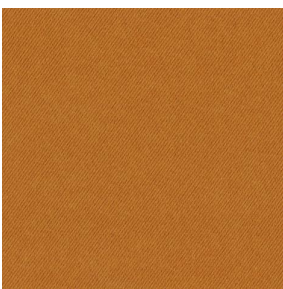
BOREAL Noir 10



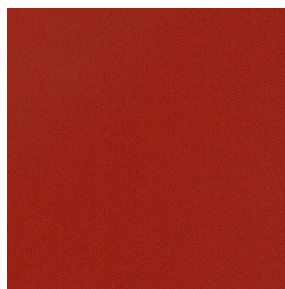
BOREAL Mousse 92



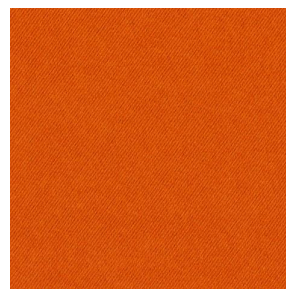
BOREAL Moutarde 47



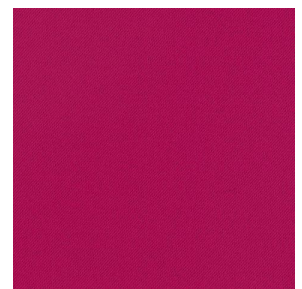
BOREAL Cuivre 50



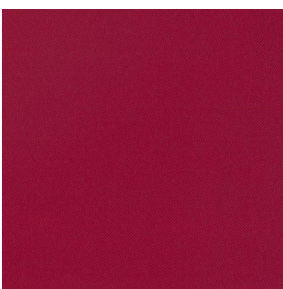
BOREAL Terracotta 65



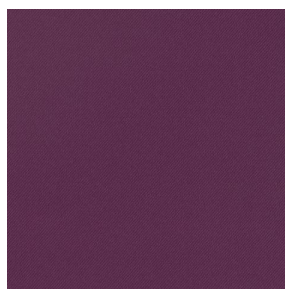
BOREAL Orange 15



BOREAL Fuchsia 33



BOREAL Bordeaux 04



BOREAL Prune 84



BOREAL BPI 00



BOREAL cactus 36

**drapilux**  
By Sotexpro

DRAPILUX GmbH - Hofenstraße 3, 77694 Kehl - Deutschland

Non-contractual photos and colors - Indicative fitting - Fitting may vary depending on support selected

# BOREAL



BOREAL emeraude 88



BOREAL nuit 128



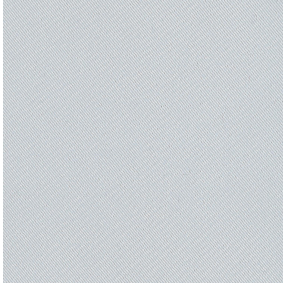
BOREAL Titanium 98



BOREAL Faience 149



BOREAL Indigo 144



# BOREAL BPI 00

Dimout support for digital printing

## Technical properties



Flame retardant



Thermal



Acoustic

Applications Roman blinds - Valences - Lining - Bed runners - Curtains

Composition 100% FR polyester

Weight 260 g/m<sup>2</sup> Width 280 cm

Fabric direction Room High Direction Fitting ↔ cm ↓ cm

Maintenance advice     

Certifications OEKO-TEX STANDARD 100 (CQ 1006/1)

Minimum order 25 linear(s) meter(s)

## Technical characteristics

Flame retardant	M1 / B1 / IMO PASS / UNI 8456 / 9174 Classe Uno
Acoustic	Noise reduction coefficient (NRC) : <b>0.88</b> Weighted sound absorption coefficient (a <sub>w</sub> ) : <b>0.90</b> Acoustic absorption class (a <sub>w</sub> ) : <b>A</b>
Resilience	Dimensional Stability (%) Warp <b>0</b> Weft <b>0</b> Breaking Elongation Warp <b>17</b> Weft <b>27</b> Breaking load (daN) Warp <b>87</b> Weft <b>110</b>

**drapilux**  
By Sotexpro

DRAPILUX GmbH - Hafenstraße 3, 77694 Kehl - Deutschland

Non-contractual photos and colors - Indicative fitting - Fitting may vary depending on support selected