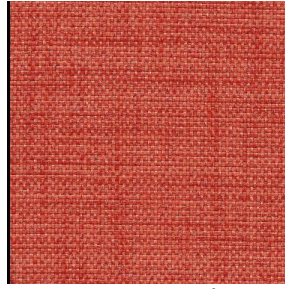


BOLERO



BOLERO Taupe 95



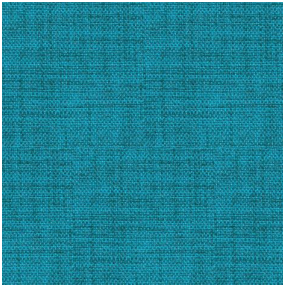
BOLERO Corail 14



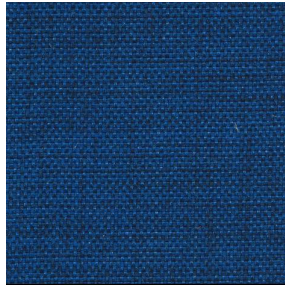
BOLERO Or 94



BOLERO Lin 11



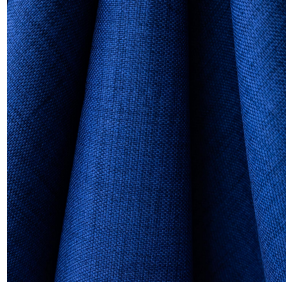
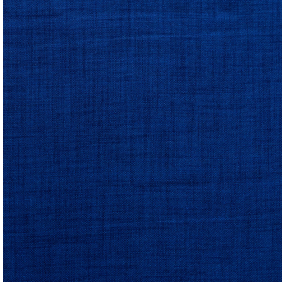
BOLERO Turquoise 53



BOLERO Naval 17



BOLERO Anthracite 38



BOLERO Nuit 128

Technical properties



Flame retardant




Thermal

Applications Roman blinds - Curtains

Composition 100% FR polyester

Weight 400 g/m² Width 290 cm

Fabric direction Room high or standard direction Fitting ↔ cm ↓ cm

Maintenance advice     

Certifications OEKO-TEX STANDARD 100 (CQ 1006/1)

Minimum order 1 linear(s) meter(s)

Technical characteristics

Flame retardant

M1 / B1 / IMO PASS / UNI 8456 / 9174 Classe Uno

Resilience

Lightfastness (units Class/8)

5

drapilux
By Sotexpro

DRAPILUX GmbH - Hafenstraße 3, 77694 Kehl - Deutschland

Non-contractual photos and colors - Indicative fitting - Fitting may vary depending on support selected