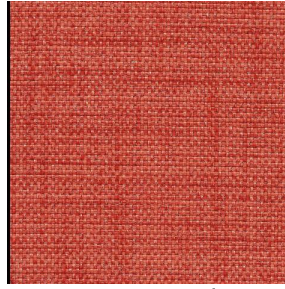


# BOLERO



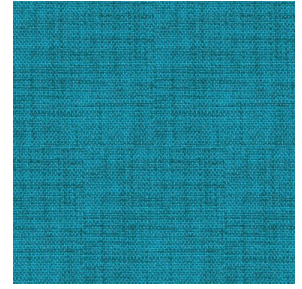
BOLERO Taupe 95



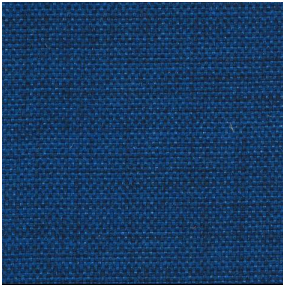
BOLERO Corail 14



BOLERO Or 94



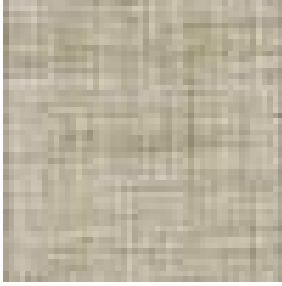
BOLERO Turquoise 53



BOLERO Naval 17



BOLERO Anthracite 38



# BOLERO Lin 11

## Technical properties



Flame retardant




Thermal

Applications Roman blinds - Curtains

Composition 100% FR polyester

Weight 400 g/m<sup>2</sup> Width 290 cm

Fabric direction Room high or standard direction Fitting ↔ cm ↓ cm

Maintenance advice     

Certifications OEKO-TEX STANDARD 100 (CQ 1006/1)

Minimum order 1 linear(s) meter(s)



## Technical characteristics

Flame retardant

M1 / B1 / IMO PASS / UNI 8456 / 9174 Classe Uno

Optical index

Light reflexion : 56 %

Light absorption : 44 %

Light transmission : 0 %

Thermal index

Solar reflexion : 58 %

Solar absorption : 41 %

Solar transmission : 1 %

UV transmission : 0 %

Gtot : Gt 38 % Fc 64 %

Resilience

Lightfastness (units Class/8)

5

**drapilux**  
By Sotexpro

DRAPILUX GmbH - Hafenstraße 3, 77694 Kehl - Deutschland

Non-contractual photos and colors - Indicative fitting - Fitting may vary depending on support selected