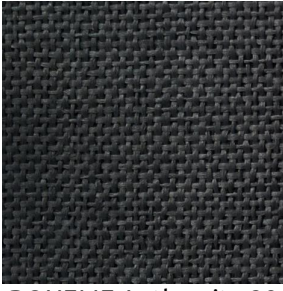


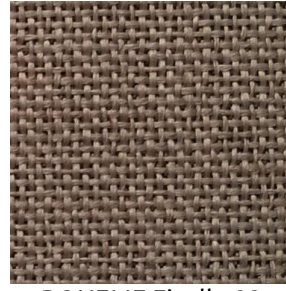
# BOHEME



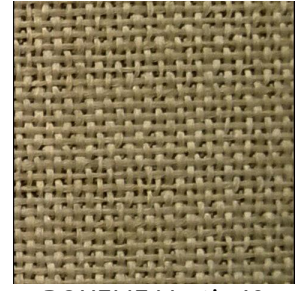
BOHEME Anthracite 38



BOHEME Taupe 95



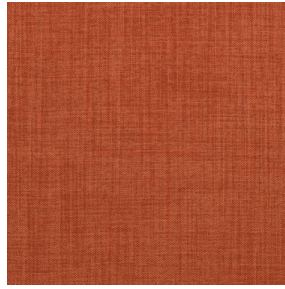
BOHEME Ficelle 09



BOHEME Mastic 48



BOHEME Carmin 14



BOHEME Citrouille 136



BOHEME Mousse 92



BOHEME Bleu jean 41

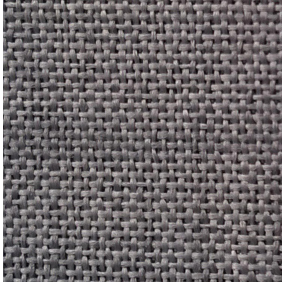


BOHEME Blanc 01

**drapilux**  
By Sotexpro

DRAPILUX GmbH - Hafenstraße 3, 77694 Kehl - Deutschland

Non-contractual photos and colors - Indicative fitting - Fitting may vary depending on support selected



# BOHEME Gris 97

## Technical properties



Flame retardant



Thermal

Applications Roman blinds - Curtains

Composition 100% FR polyester

Weight 260 g/m<sup>2</sup> Width 290 cm

Fabric direction Room high or standard direction Fitting ↔ cm ↓ cm

Maintenance advice     

Certifications OEKO-TEX STANDARD 100 (CQ 1006/1)

Minimum order 1 linear(s) meter(s)

## Technical characteristics

Flame retardant	M1 / B1 / IMO PASS	
Optical index	Light reflexion :	37 %
	Light absorption :	63 %
	Light transmission :	0 %
Thermal index	Solar reflexion :	48 %
	Solar absorption :	51 %
	Solar transmission :	1 %
	UV transmission :	0 %
	Gtot :	Gt 41 % Fc 70 %
Resilience	Lightfastness (units Class/8)	5

**drapilux**  
By Sotexpro

DRAPILUX GmbH - Hafenstraße 3, 77694 Kehl - Deutschland

Non-contractual photos and colors - Indicative fitting - Fitting may vary depending on support selected