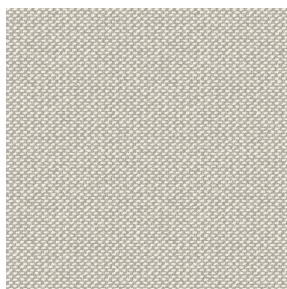
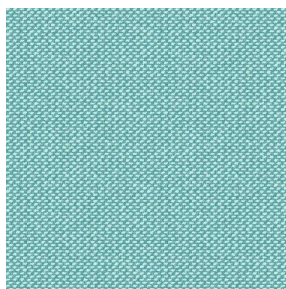


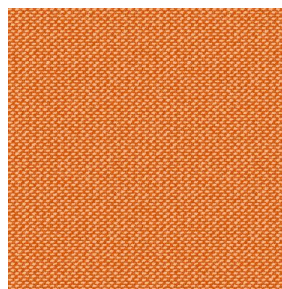
# BIOSAT METIS 2162



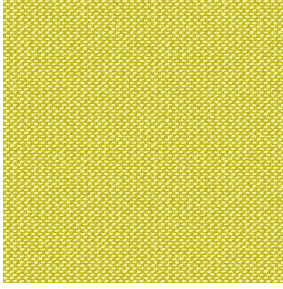
BIOSAT METIS 2162 Lin  
11



BIOSAT METIS 2162  
lagon 110



BIOSAT METIS 2162  
Citrouille 136



# BIOSAT METIS 2162

## Bergamotte 121

Combine aesthetics and well-being with high-tech fibres for antibacterial and antiviral action : kills 99% of bacteria (tested on staphylococcus aureus et klebsiella pneumoniae). BIOSAT was tested on 2 virus strains: the enveloped human coronavirus HCoV-229 (similar to Covid-19) and the non-enveloped Murine Norovirus (similar to the gastroenteritis virus). For the former, BIOSAT kills nearly 98% of the virus in less than 2 hours and for the latter, 73% in less than 2 hours.

### Technical properties



Flame retardant



Thermal



Antibacterial



Antiviral



Acoustic

Applications Roman blinds - Panel curtains - Curtains - Partition curtain

Composition polyester/polyester FR bioactive

Weight 135 g/m<sup>2</sup> Width 280 cm

Fabric direction Room high or standard direction Fitting ↔ cm ↓ cm

Maintenance advice

Labels France Terre Textile (R016)

Certifications OEKO-TEX STANDARD 100 (CQ 1006/1)

Minimum order 25 linear(s) meter(s)

## Technical characteristics

Flame retardant	M1 / B1 / IMO PASS / UNI 8456 / 9174 Classe Uno
Acoustic	Noise reduction coefficient (NRC) : <b>0.72</b>
Antibacterial	Yes
Optical index	Light reflexion : <b>57 %</b> Light absorption : <b>16 %</b> Light transmission : <b>27 %</b>
Thermal index	Solar reflexion : <b>53 %</b> Solar absorption : <b>19 %</b> Solar transmission : <b>28 %</b> UV transmission : <b>2 %</b> Gtot : <b>Gt 40 % Fc 68 %</b>
Resilience	Lightfastness (units Class/8) <b>6</b> Pilling <b>5</b> Dimensional Stability (%) Warp <b>-0.5</b> Weft <b>-0.5</b> Martindale (Cycles) <b>14000</b> Breaking Elongation Warp <b>43</b> Weft <b>37</b> Breaking load (daN) Warp <b>42</b> Weft <b>129</b>

**drapilux**  
By Sotexpro

DRAPILUX GmbH - Hofenstraße 3, 77694 Kehl - Deutschland

Non-contractual photos and colors - Indicative fitting - Fitting may vary depending on supports selected