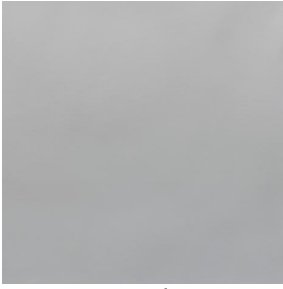


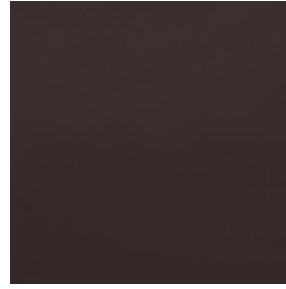
# BELORA



BELORA Blanc 01



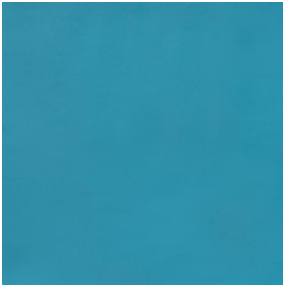
BELORA Beige 90



BELORA Taupe 95



BELORA Acier 18



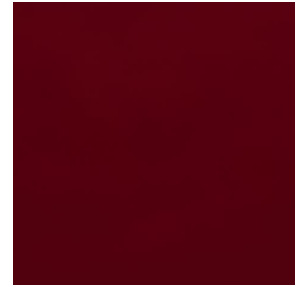
BELORA Turquoise 53



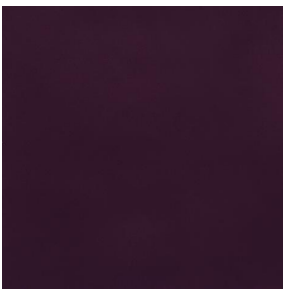
BELORA Mousse 92



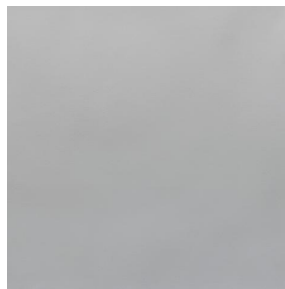
BELORA Fuchsia 33



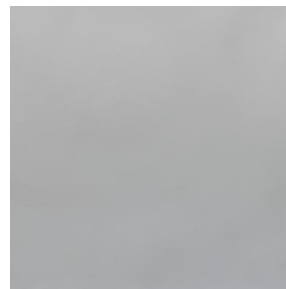
BELORA Rouge 22



BELORA Prune 84



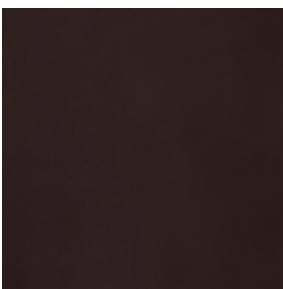
BELORA BPI 00



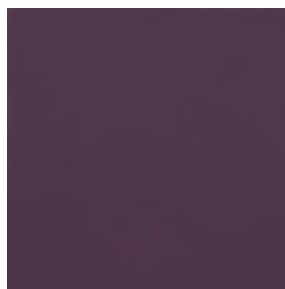
BELORA BPI 00



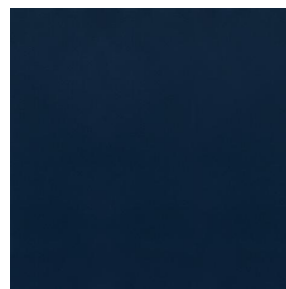
BELORA Pourpre 146



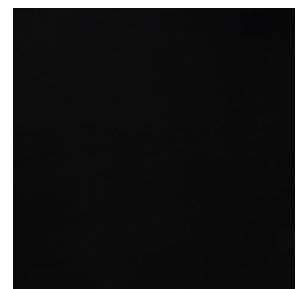
BELORA Marron 102



BELORA Mauve 68



BELORA Marine 25



BELORA Noir 10



BELORA Crème 02

**drapilux**  
By Sotexpro

DRAPILUX GmbH - Hafenstraße 3, 77694 Kehl - Deutschland

Non-contractual photos and colors - Indicative fitting - Fitting may vary depending on support selected



# BELORA Océan 91

This plain dimout fabric comes in a range of several colours. It does not have an M1 fire rating.

## Technical properties



Thermal



Acoustic

Applications Roman blinds - Lining - Curtains

Composition 100% polyester

Weight 260 g/m<sup>2</sup> Width 290 cm

Fabric direction Room high or standard direction Fitting ↔ cm ↓ cm

Maintenance advice     

Certifications OEKO-TEX STANDARD 100 (CQ 1006/1)

Minimum order 30 linear(s) meter(s)

## Technical characteristics

|                 |   |                        |
|-----------------|---|------------------------|
| Flame retardant | NF 12952  |                        |
| Acoustic        | Noise reduction coefficient (NRC) :                       | <b>0.88</b>            |
|                 | Weighted sound absorption coefficient (a <sub>w</sub> ) : | <b>0.90</b>            |
|                 | Acoustic absorption class (a <sub>w</sub> ) :             | <b>A</b>               |
| Optical index   | Light reflexion :   | <b>55 %</b>            |
|                 | Light absorption :  | <b>45 %</b>            |
|                 | Light transmission :                                      | <b>0 %</b>             |
| Thermal index   | Solar reflexion :   | <b>53 %</b>            |
|                 | Solar absorption :  | <b>47 %</b>            |
|                 | Solar transmission :                                      | <b>0 %</b>             |
|                 | UV transmission :   | <b>0 %</b>             |
|                 | Gtot :  | <b>Gt 40 % Fc 67 %</b> |
| Resilience      | Lightfastness (units Class/8)                             | <b>6</b>               |
|                 | Dimentional Stability (%)                                 |                        |
|                 | Warp  | <b>0</b>               |
|                 | Weft  | <b>0</b>               |
|                 | Breaking Elongation                                       |                        |
|                 | Warp  | <b>17</b>              |
|                 | Weft  | <b>27</b>              |
|                 | Breaking load (daN)                                       |                        |
|                 | Warp  | <b>87</b>              |
|                 | Weft  | <b>110</b>             |

**drapilux**  
By Sotexpro

DRAPILUX GmbH - Hafenstraße 3, 77694 Kehl - Deutschland

Non-contractual photos and colors - Indicative fitting - Fitting may vary depending on support selected