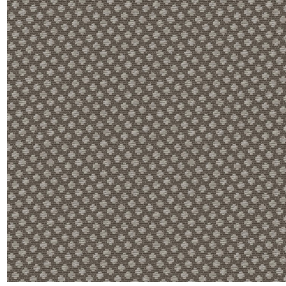




VELTEN BPI 00
Druck-Trägergewebe



GONIDIE Taupe 95
Druck design



Druck-Trägergewebe **VELTEN BPI 00** Druck design **GONIDIE Taupe 95**

Druck-Trägergewebe zur Verdunkelung ohne Klassifizierung in Velvet mit Acrylbeschichtung

Technische Eigenschaften

Applications Falzgardinen - Flächenvorhänge - Vorhänge

Zusammensetzung 100% nicht klassifizierter Polyester mit weiß meliertem Acryl-Trägermaterial

Gewicht 390 g/m²

Breite 260 cm

Stoffrichtung Standardrichtung

Eignung ↔ 0.0 cm ↓ 0.0 cm

Pflegehinweis     

Beschriftung

Mindestbestellmenge 25



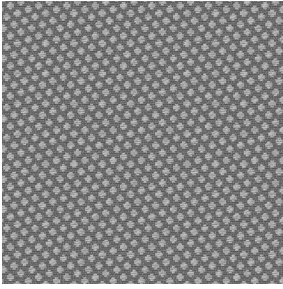
Das Display berücksichtigt nicht das Druck-Trägermaterial. Die endgültige Wiedergabe kann je nach gewähltem Trägermaterial unterschiedlich sein.

Technische Eigenschaften

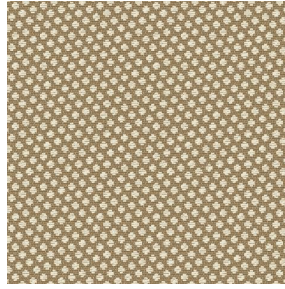
Beständigkeit

Lichtechtheit (Einheiten Klasse/8)	4
Formstabilität (%)	
Verzerrung	-1
Querfäden	0
Bruchdehnung	
Verzerrung	69
Querfäden	106
Bruchlast (daN)	
Verzerrung	52
Querfäden	41

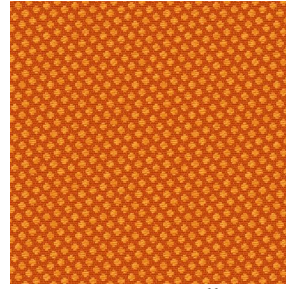
Druck design GONIDIE



GONIDIE Souris 31



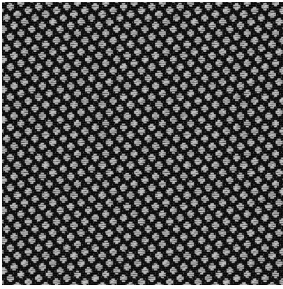
GONIDIE Beige 63



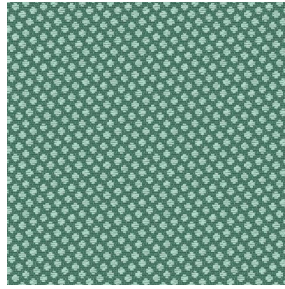
GONIDIE Citrouille 136



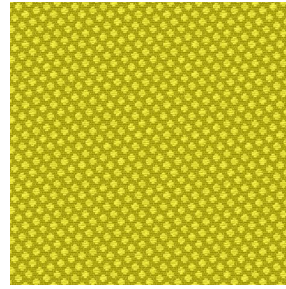
GONIDIE Glacier 43



GONIDIE Noir 10



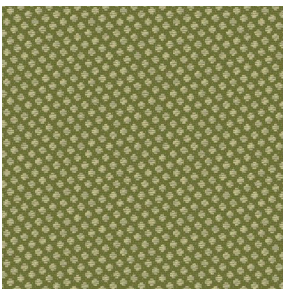
GONIDIE Céladon 135



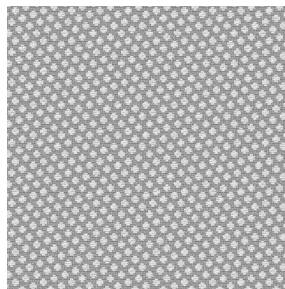
GONIDIE Anis 62



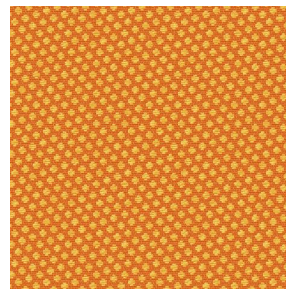
GONIDIE Perle 96



GONIDIE Mousse 92



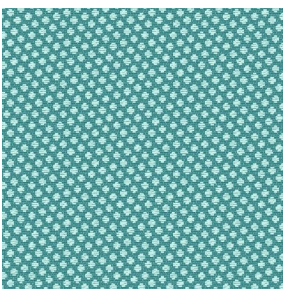
GONIDIE Tourterelle
138



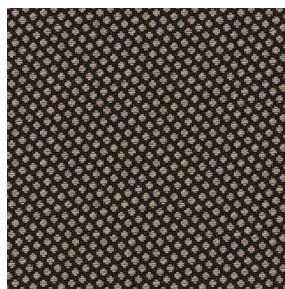
GONIDIE Brique 42



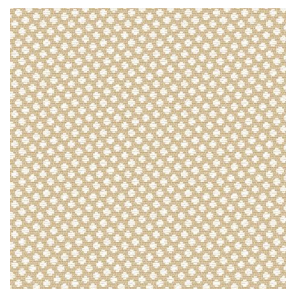
GONIDIE Opéra 104



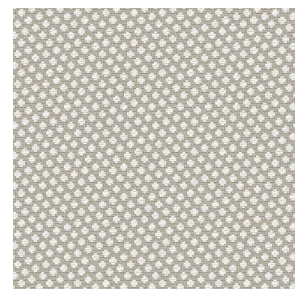
GONIDIE Pacifique 54



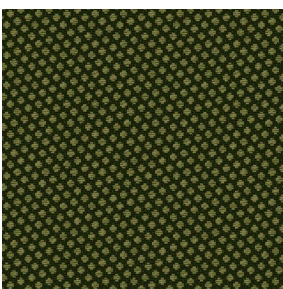
GONIDIE Brun 23



GONIDIE Crème 32



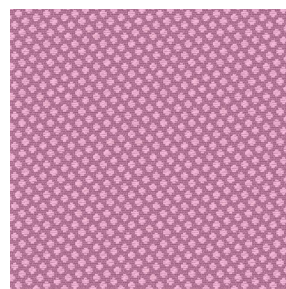
GONIDIE Lin 11



GONIDIE Lierre 124



GONIDIE Bergamote
121



GONIDIE Hortensia 134



GONIDIE Vieux rose 64

drapilux
By Sotexpro

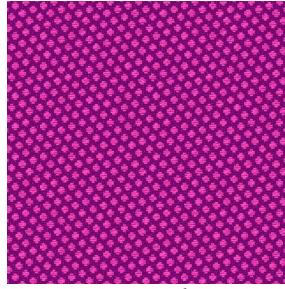
DRAPILUX GmbH - Hofenstraße 3, 77694 Kehl - Deutschland

Non-contractual photos and colors - Indicative fitting - Fitting may vary depending on support selected

Druck design GONIDIE



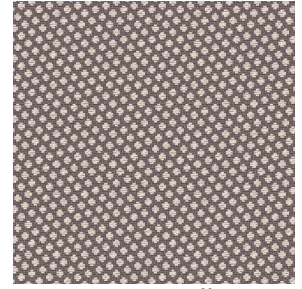
GONIDIE Emeraude 88



GONIDIE Fuchsia 33



GONIDIE Ebene 113



GONIDIE Ficelle 09