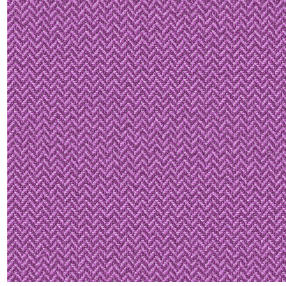




**VEGA 00 BPI 00**  
Druck-Trägergewebe



**SCOURTIN Violine 105**  
Druck design



# Druck-Trägergewebe **VEGA 00 BPI 00** Druck design **SCOURTIN Violine 105**

Druck-Trägergewebe zur Verdunkelung im Velvet-Look

## Technische Eigenschaften



Feuerfestigkeit

**Applications** Faltgardinen - Flächenvorhänge - Vorhänge

**Zusammensetzung** 100% Polyester mit weiß meliertem Acryl-Trägermaterial

**Gewicht** 390 g/m<sup>2</sup>

**Breite** 260 cm

**Stoffrichtung** Rückwärtsrichtung

**Eignung** ↔ cm ↓ cm

**Pflegehinweis**

**Beschriftung**

**Mindestbestellmenge** 25



Das Display berücksichtigt nicht das Druck-Trägermaterial. Die endgültige Wiedergabe kann je nach gewähltem Trägermaterial unterschiedlich sein.

## Technische Eigenschaften

Feuerfestigkeit

EN13773 : 2003 Class 1 / BS 5867 TYPE B / B1 / IMO PASS

Beständigkeit

Lichtechtheit (Einheiten Klasse/8) **4**

Formstabilität (%)

Verzerrung **-1**

Querfäden **0**

Bruchdehnung

Verzerrung **69**

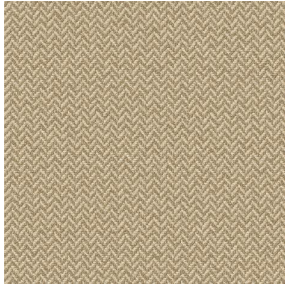
Querfäden **106**

Bruchlast (daN)

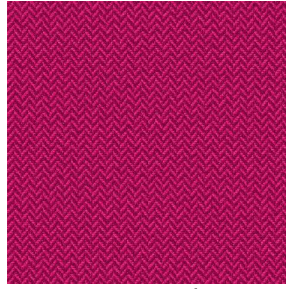
Verzerrung **52**

Querfäden **41**

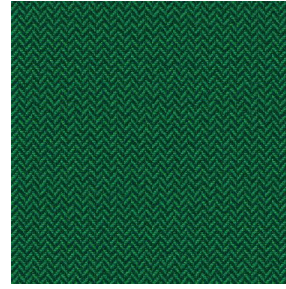
# Druck design SCOURTIN



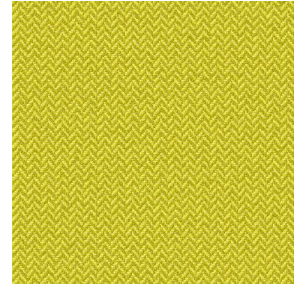
SCOURTIN Beige 63



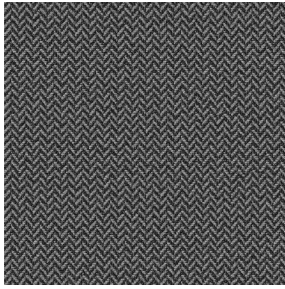
SCOURTIN Fuchsia 33



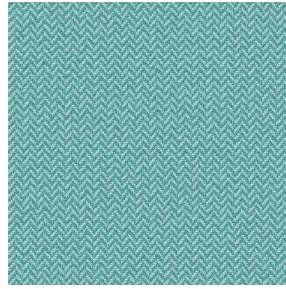
SCOURTIN Sapin 126



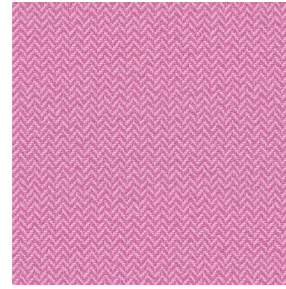
SCOURTIN Bergamote  
121



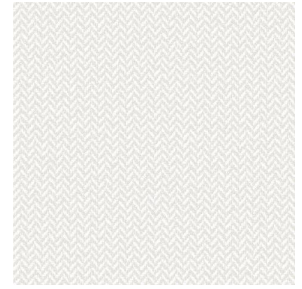
SCOURTIN Anthracite  
38



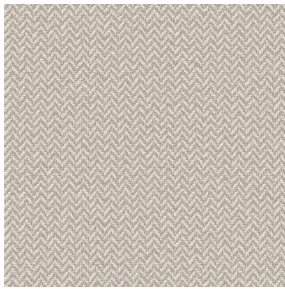
SCOURTIN Pacifique 54



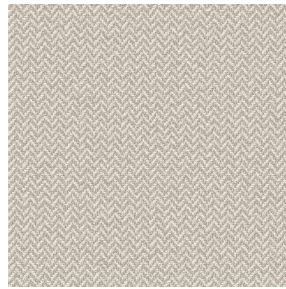
SCOURTIN Rose 129



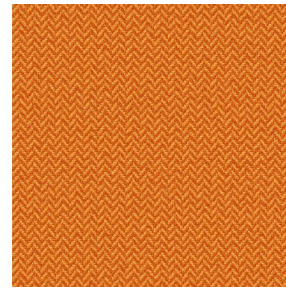
SCOURTIN Blanc 01



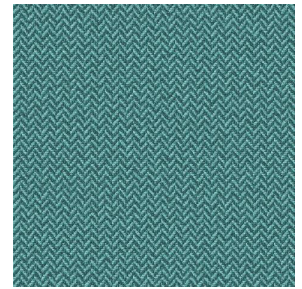
SCOURTIN Lin 11



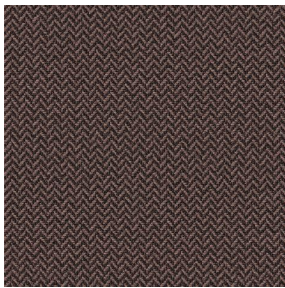
SCOURTIN Naturel 26



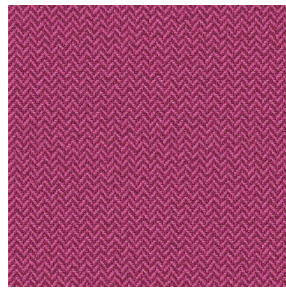
SCOURTIN Citrouille  
136



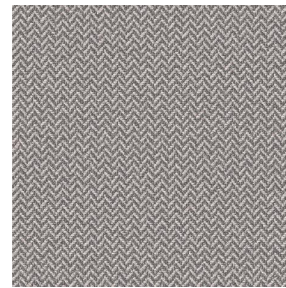
SCOURTIN Turquoise 53



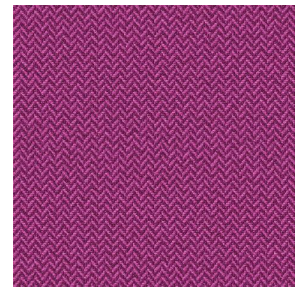
SCOURTIN Brun 23



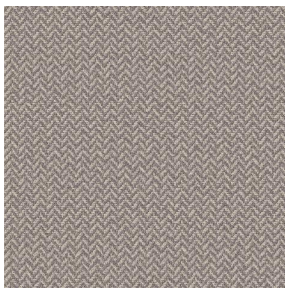
SCOURTIN Hortensia  
134



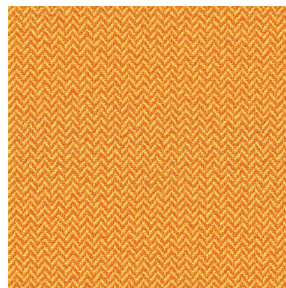
SCOURTIN Orage 123



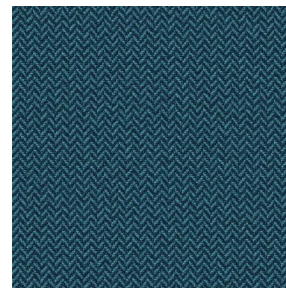
SCOURTIN Rubis 59



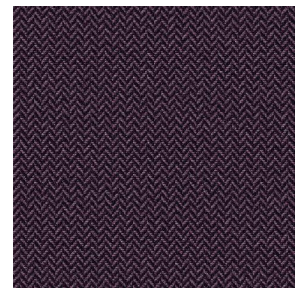
SCOURTIN Ficelle 09



SCOURTIN Maïs 37



SCOURTIN Céladon 135



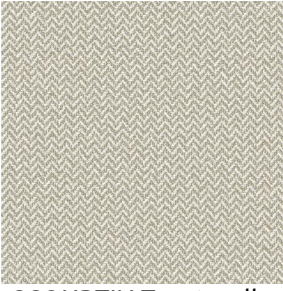
SCOURTIN Ebene 113

**drapilux**  
By Sotexpro

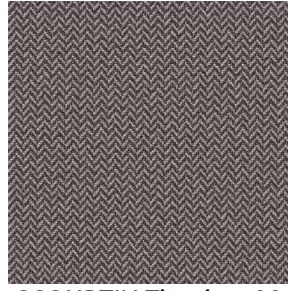
DRAPILUX GmbH - Hofenstraße 3, 77694 Kehl - Deutschland

Non-contractual photos and colors - Indicative fitting - Fitting may vary depending on support selected

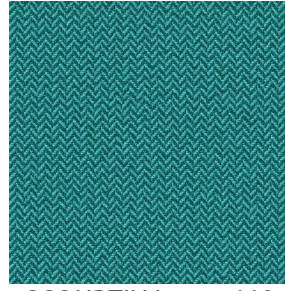
## Druck design SCOURTIN



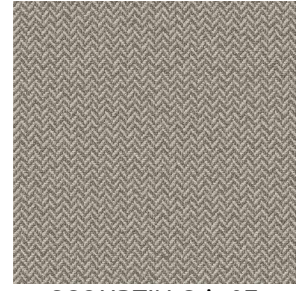
SCOURTIN Tourterelle  
138



SCOURTIN Titanium 98



SCOURTIN Lagon 110



SCOURTIN Gris 97