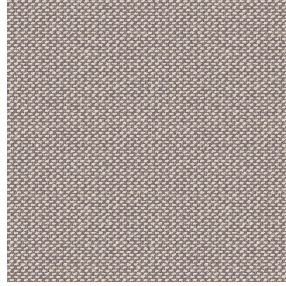




TAO BPI 00
Druck-Trägergewebe



METIS Chanvre 72
Druck design



Druck-Trägergewebe TAO BPI 00 Druck design METIS Chanvre 72

Druck-Trägergewebe zur Verdunkelung ohne Klassifizierung in Velvet mit Acrylbeschichtung

Applications Faltdgardinen - Flächenvorhänge - Vorhänge

Zusammensetzung 100% nicht klassifizierter Polyester

Gewicht 465 g/m²

Breite 132 cm

Stoffrichtung Standardrichtung

Eignung ↔ 0,0 cm ↓ 0,0 cm

Pflegehinweis     

Beschriftung

Mindestbestellmenge 25



Das Display berücksichtigt nicht das Druck-Trägermaterial. Die endgültige Wiedergabe kann je nach gewähltem Trägermaterial unterschiedlich sein.

Technische Eigenschaften

Beständigkeit

Lichtechtheit (Einheiten Klasse/8)

5

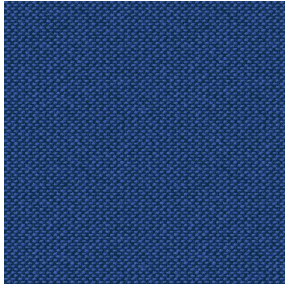
Pilling

5

Martindale (Zyklen)

60000

Druck design METIS



METIS Gentiane 16



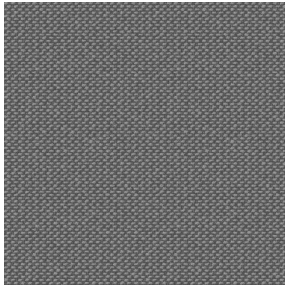
METIS Absinthe 132



METIS Noir 10



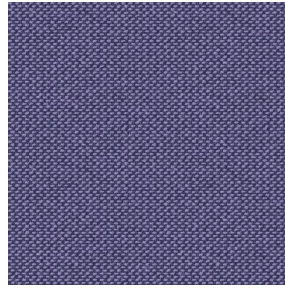
METIS Citrouille 136



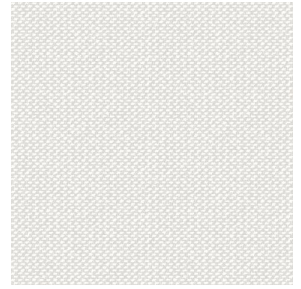
METIS Gris 97



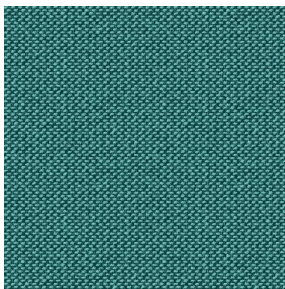
METIS Bergamote 121



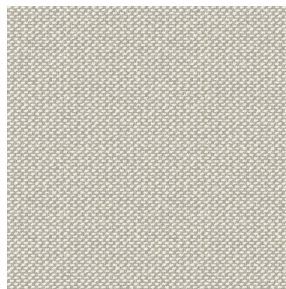
METIS Violine 105



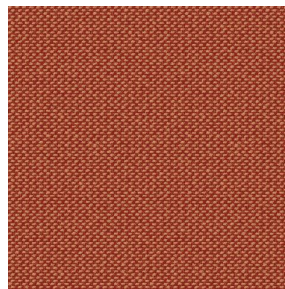
METIS Perle 96



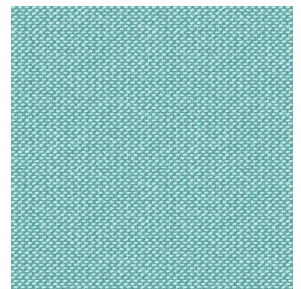
METIS Céladon 135



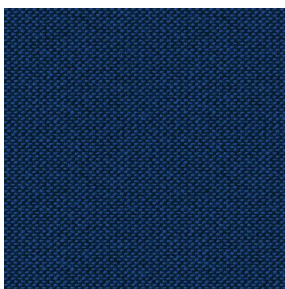
METIS Lin 11



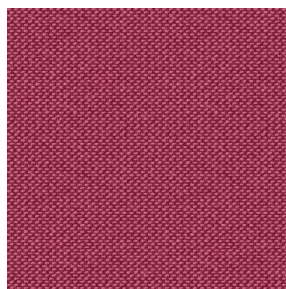
METIS Sienne 29



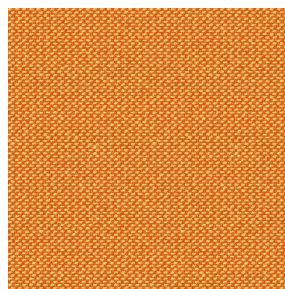
METIS Lagon 110



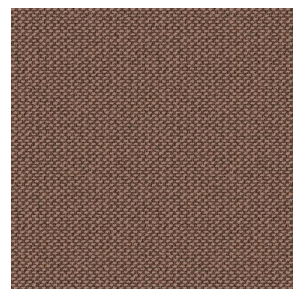
METIS Cobalt 114



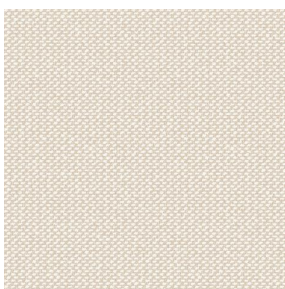
METIS Framboise 81



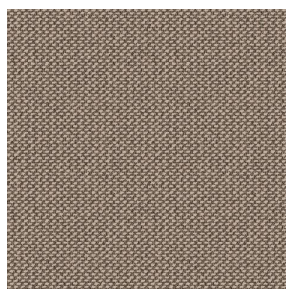
METIS Abricot 08



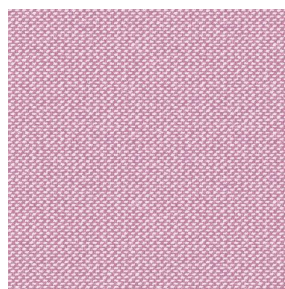
METIS Chamois 111



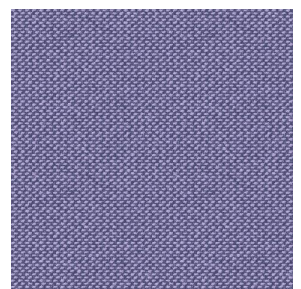
METIS Ivoire 115



METIS Ficelle 09



METIS Rose 129



METIS Parme 79

drapilux
By Sotexpro

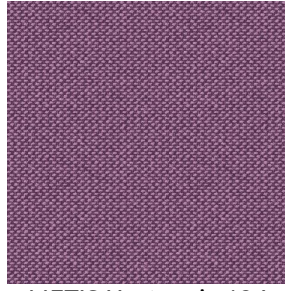
DRAPILUX GmbH - Hofenstraße 3, 77694 Kehl - Deutschland

Non-contractual photos and colors - Indicative fitting - Fitting may vary depending on support selected

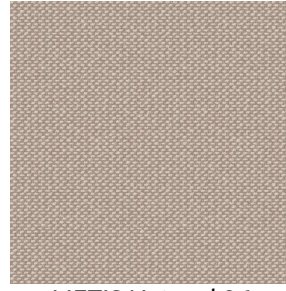
Druck design METIS



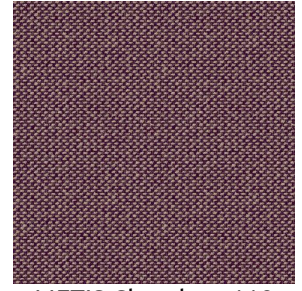
METIS Cactus 36



METIS Hortensia 134



METIS Naturel 26



METIS Chaudron 118