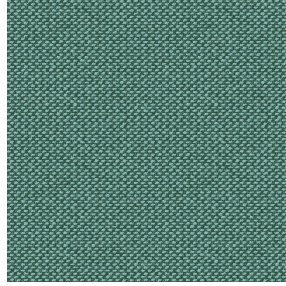
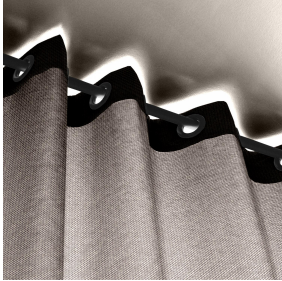




TAO BPI 00  
Druck-Trägergewebe



METIS Absinthe 132  
Druck design



## Druck-Trägergewebe TAO BPI 00 Druck design METIS Absinthe 132

Druck-Trägergewebe zur Verdunkelung ohne Klassifizierung in Velvet mit Acrylbeschichtung

**Applications** Faltgardinen - Flächenvorhänge - Vorhänge

**Zusammensetzung** 100% nicht klassifizierter Polyester

**Gewicht** 465 g/m<sup>2</sup>

**Breite** 132 cm

**Stoffrichtung** Standardrichtung

**Eignung** ↔ 0,0 cm ↓ 0,0 cm

**Pflegehinweis**     

**Beschriftung**

**Mindestbestellmenge** 25



Das Display berücksichtigt nicht das Druck-Trägermaterial. Die endgültige Wiedergabe kann je nach gewähltem Trägermaterial unterschiedlich sein.

## Technische Eigenschaften

Beständigkeit

Lichtechtheit (Einheiten Klasse/8)

5

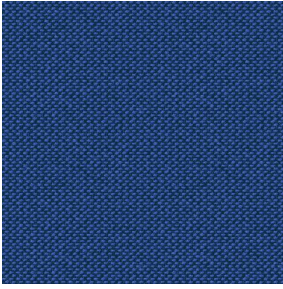
Pilling

5

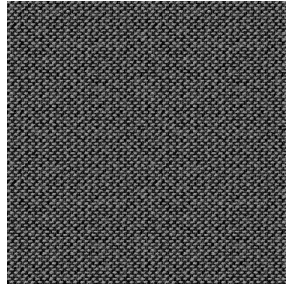
Martindale (Zyklen)

60000

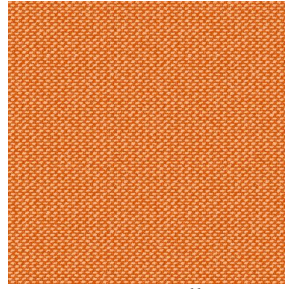
# Druck design METIS



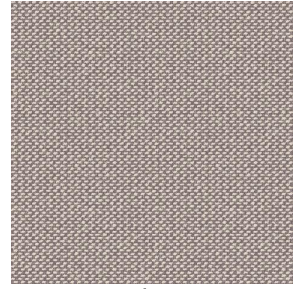
METIS Gentiane 16



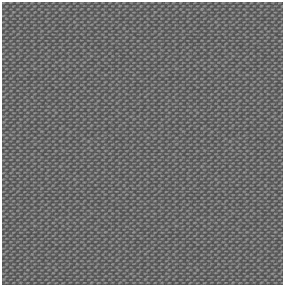
METIS Noir 10



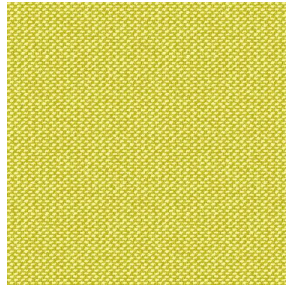
METIS Citrouille 136



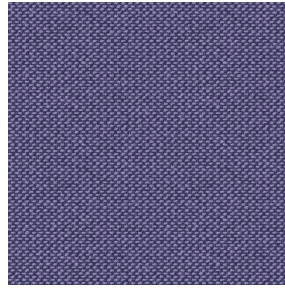
METIS Chanvre 72



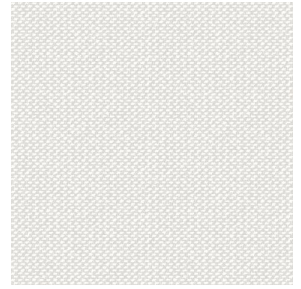
METIS Gris 97



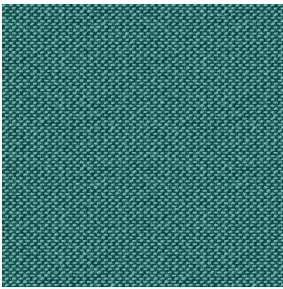
METIS Bergamote 121



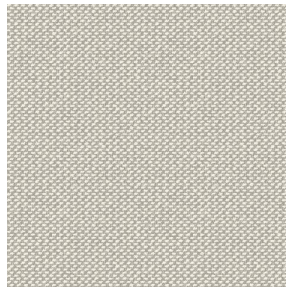
METIS Violine 105



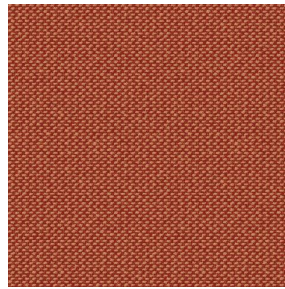
METIS Perle 96



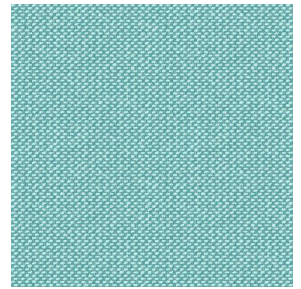
METIS Céladon 135



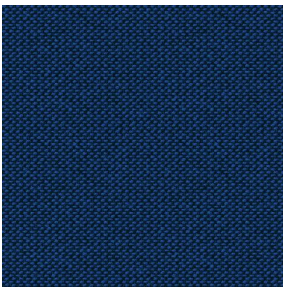
METIS Lin 11



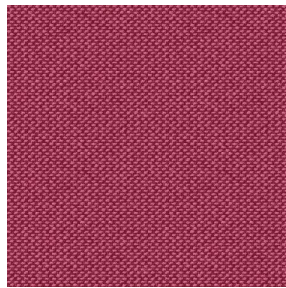
METIS Sienne 29



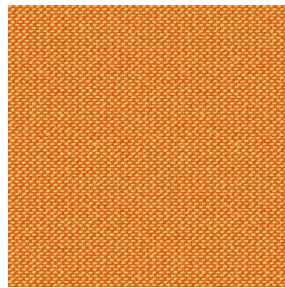
METIS Lagon 110



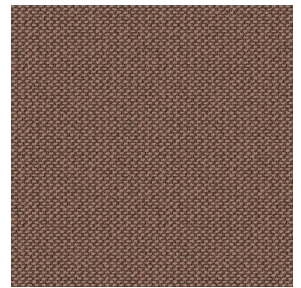
METIS Cobalt 114



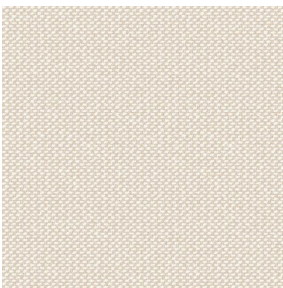
METIS Framboise 81



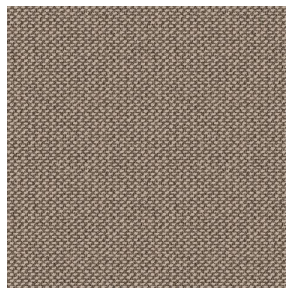
METIS Abricot 08



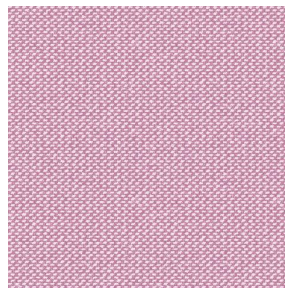
METIS Chamois 111



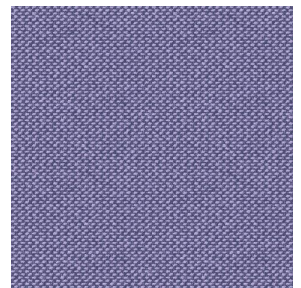
METIS Ivoire 115



METIS Ficelle 09



METIS Rose 129



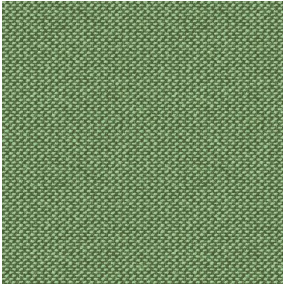
METIS Parme 79

**drapilux**  
By Sotexpro

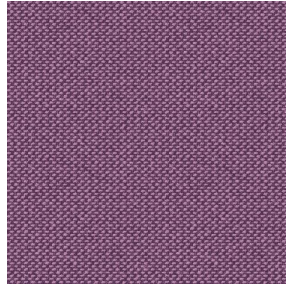
DRAPILUX GmbH - Hofenstraße 3, 77694 Kehl - Deutschland

Non-contractual photos and colors - Indicative fitting - Fitting may vary depending on support selected

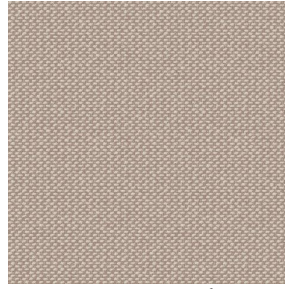
## Druck design METIS



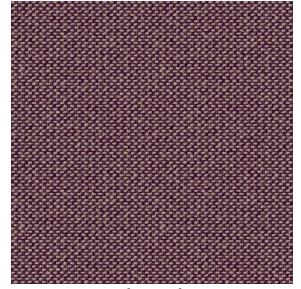
METIS Cactus 36



METIS Hortensia 134



METIS Naturel 26



METIS Chaudron 118