



TAO BPI 00
Druck-Trägergewebe



ELAINA Chamois 111
Druck design



Druck-Trägergewebe TAO BPI 00 Druck design ELAINA Chamois 111

Druck-Trägergewebe zur Verdunkelung ohne Klassifizierung in Velvet mit Acrylbeschichtung

Applications Faltdgardinen - Flächenvorhänge - Vorhänge

Zusammensetzung 100% nicht klassifizierter Polyester

Gewicht 465 g/m²

Breite 132 cm

Stoffrichtung Standardrichtung

Eignung ↔ 0,0 cm ↓ 0,0 cm

Pflegehinweis     

Beschriftung

Mindestbestellmenge 25



Das Display berücksichtigt nicht das Druck-Trägermaterial. Die endgültige Wiedergabe kann je nach gewähltem Trägermaterial unterschiedlich sein.

Technische Eigenschaften

Beständigkeit

Lichtechtheit (Einheiten Klasse/8)

5

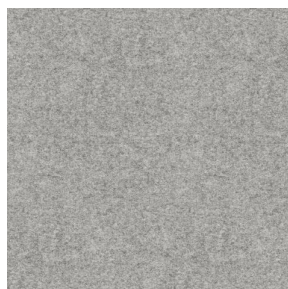
Pilling

5

Martindale (Zyklen)

60000

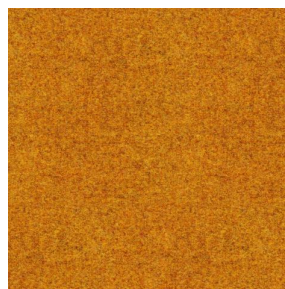
Druck design ELAINA



ELAINA Gris 91



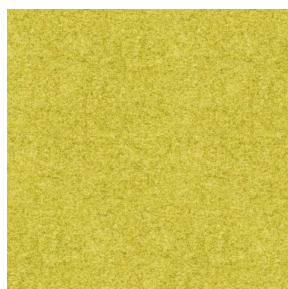
ELAINA Violine 105



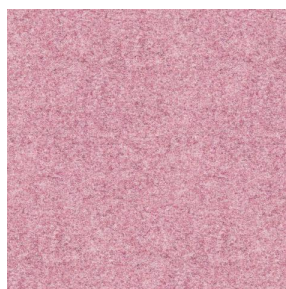
ELAINA Ocre 03



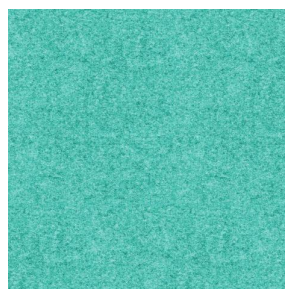
ELAINA Lin 11



ELAINA Bergamote 121



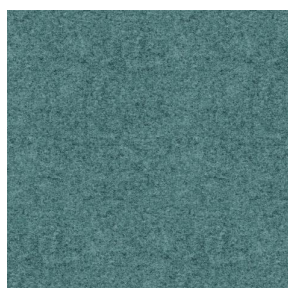
ELAINA Rose 129



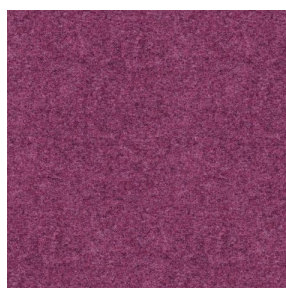
ELAINA Pacifique 54



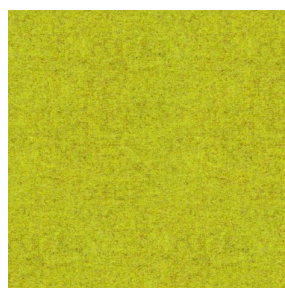
ELAINA Beige 63



ELAINA Céladon 135



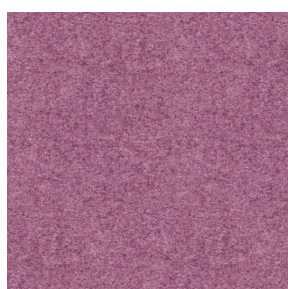
ELAINA Saphir 106



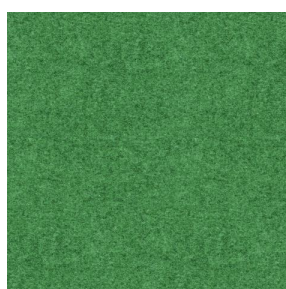
ELAINA Anis 62



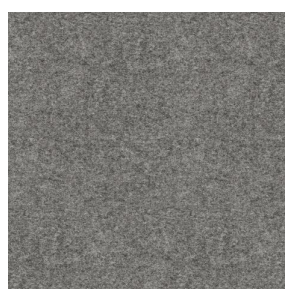
ELAINA Rouge 21



ELAINA Hortensia 134



ELAINA Prairie 125



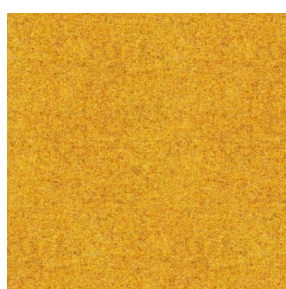
ELAINA Graphite 77



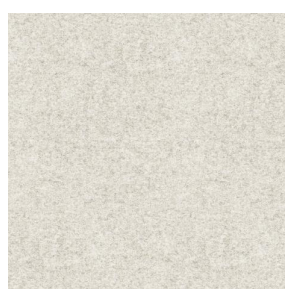
ELAINA Lierre 124



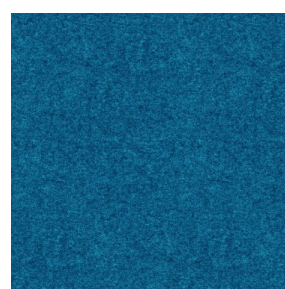
ELAINA Naturel 26



ELAINA Genêt 06



ELAINA Ivoire 115



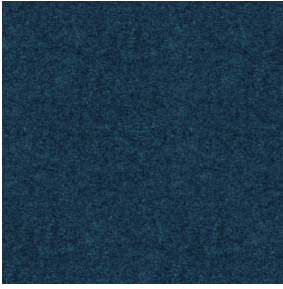
ELAINA Gentiane 16

drapilux
By Sotexpro

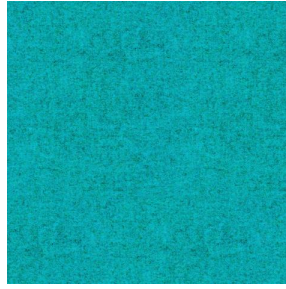
DRAPILUX GmbH - Hofenstraße 3, 77694 Kehl - Deutschland

Non-contractual photos and colors - Indicative fitting - Fitting may vary depending on support selected

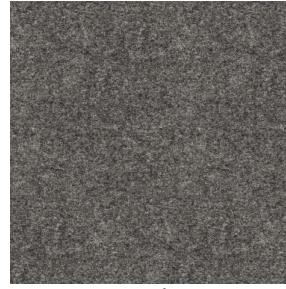
Druck design ELAINA



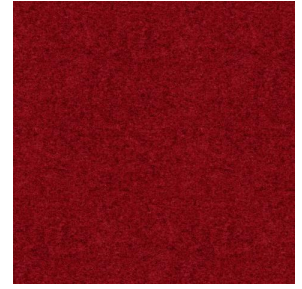
ELAINA Navy 120



ELAINA Turquoise 53



ELAINA Anthracite 38



ELAINA Fiesta 131