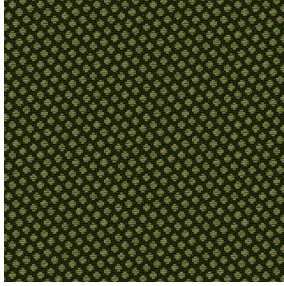




TAO BPI 00  
Druck-Trägergewebe



GONIDIE Lierre 124  
Druck design



Das Display berücksichtigt nicht das Druck-Trägermaterial. Die endgültige Wiedergabe kann je nach gewähltem Trägermaterial unterschiedlich sein.

## Technische Eigenschaften

Beständigkeit

Lichtechtheit (Einheiten Klasse/8)	5
Pilling	5
Martindale (Zyklen)	60000

## Druck-Trägergewebe TAO BPI 00 Druck design GONIDIE Lierre 124

Druck-Trägergewebe zur Verdunkelung ohne Klassifizierung in Velvet mit Acrylbeschichtung

Applications Faltgardinen - Flächenvorhänge - Vorhänge

Zusammensetzung 100% nicht klassifizierter Polyester

Gewicht 465 g/m<sup>2</sup>

Breite 132 cm

Stoffrichtung Standardrichtung

Eignung ↔ 0,0 cm ↓ 0,0 cm

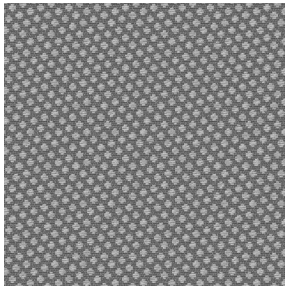
Pflegehinweis     

Beschriftung

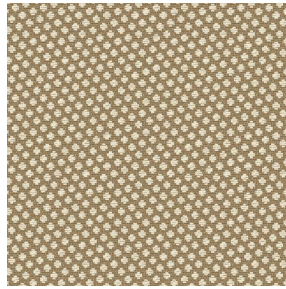
Mindestbestellmenge 25



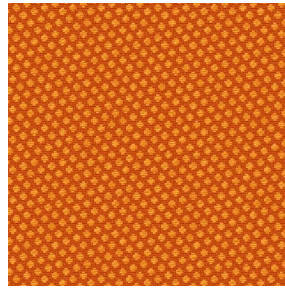
# Druck design GONIDIE



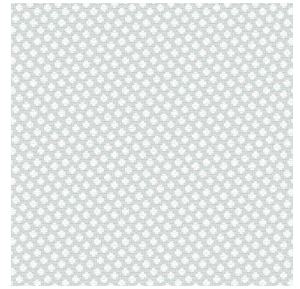
GONIDIE Souris 31



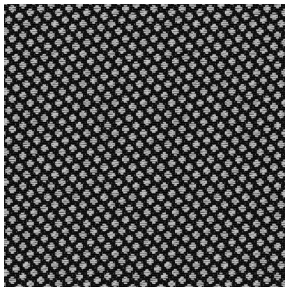
GONIDIE Beige 63



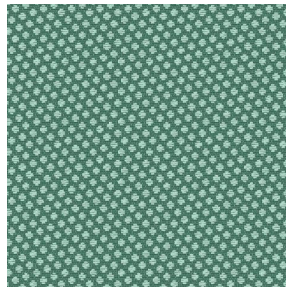
GONIDIE Citrouille 136



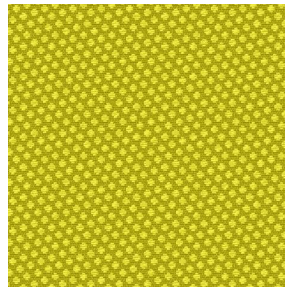
GONIDIE Glacier 43



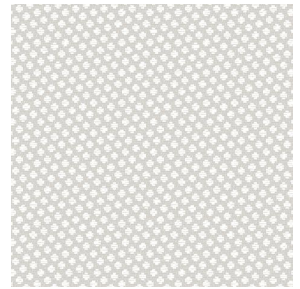
GONIDIE Noir 10



GONIDIE Céladon 135



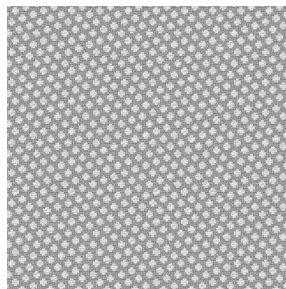
GONIDIE Anis 62



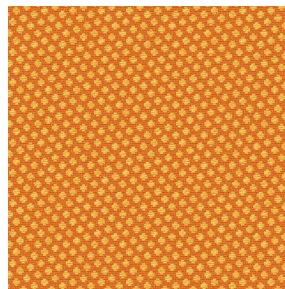
GONIDIE Perle 96



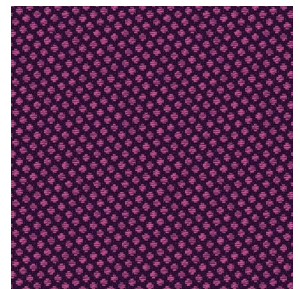
GONIDIE Mousse 92



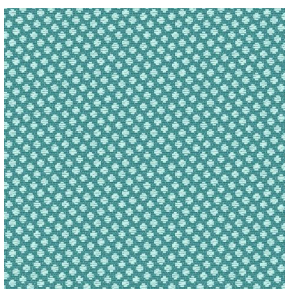
GONIDIE Tourterelle  
138



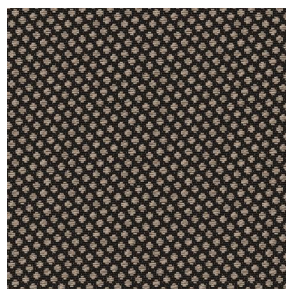
GONIDIE Brique 42



GONIDIE Opéra 104



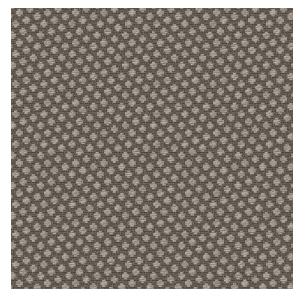
GONIDIE Pacifique 54



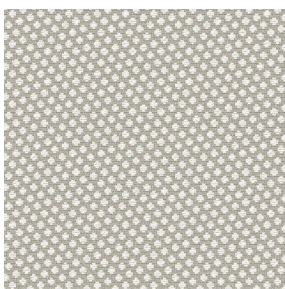
GONIDIE Brun 23



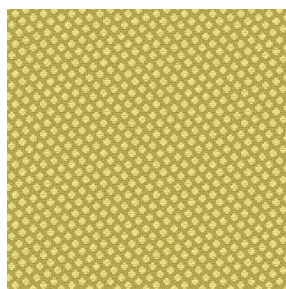
GONIDIE Crème 32



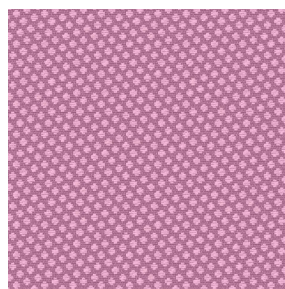
GONIDIE Taupe 95



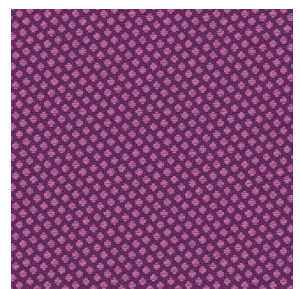
GONIDIE Lin 11



GONIDIE Bergamote  
121



GONIDIE Hortensia 134



GONIDIE Vieux rose 64

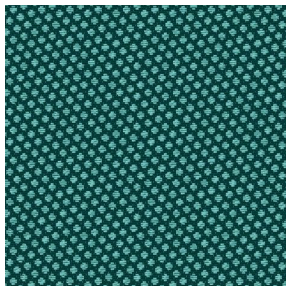
**drapilux**  
By Sotexpro

DRAPILUX GmbH - Hofenstraße 3, 77694 Kehl - Deutschland

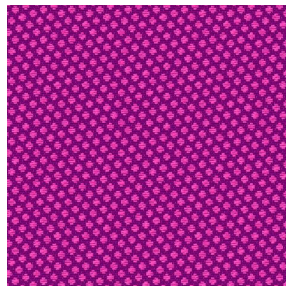
Non-contractual photos and colors - Indicative fitting - Fitting may vary depending on support selected



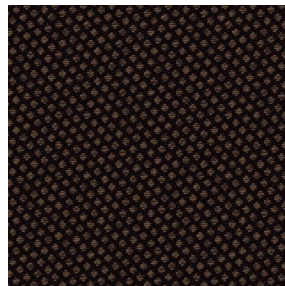
## Druck design GONIDIE



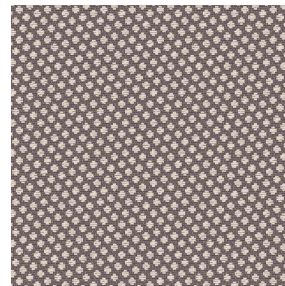
GONIDIE Emeraude 88



GONIDIE Fuchsia 33



GONIDIE Ebene 113



GONIDIE Ficelle 09

**drapilux**  
by Sotexpro

DRAPILUX GmbH - Hafenstraße 3, 77694 Kehl - Deutschland

Non-contractual photos and colors - Indicative fitting - Fitting may vary depending on support selected