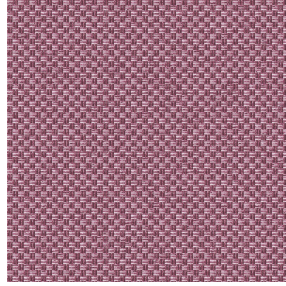


SKAILO Blanc 01
Druck-Trägergewebe



CHARLOTTE Vieux rose 64
Druck design



Das Display berücksichtigt nicht das Druck-Trägermaterial. Die endgültige Wiedergabe kann je nach gewähltem Trägermaterial unterschiedlich sein.

Druck-Trägergewebe **SKAILO Blanc 01** Druck design **CHARLOTTE Vieux rose 64**

Unsere SKAILO-Qualität ist ein Kunstleder, das als Druckgrundware entwickelt wurde. Seine Lederoptik ist fein strukturiert, sein textiles Grundgewebe aus Polyester/Baumwolle verleiht ihm Flexibilität. Aufgrund der Flexibilität und den guten Werten, bezogen auf die Abriebfestigkeit, ist diese Qualität ideal für die Herstellung von Bettkopfteilen, Sesseln und Hockern. Dank unserer neuen Drucktechnologie im Direktdruck, können wir SKAILO exakt auf das Grundgewebe abstimmen. Diese Technik garantiert eine optimale Wiedergabe der Designs und Faben.

Applications Valence-Vorhänge - Bettkopf

Zusammensetzung poly-coton enduction polyuréthane

Gewicht 435 g/m²

Breite 138 cm

Stoffrichtung Rückwärts- oder Standardrichtung

Eignung ↔ 0.0 cm ↓ 0.0 cm

Pflegehinweis     

Beschriftung

Mindestbestellmenge 35

Technische Eigenschaften

Beständigkeit

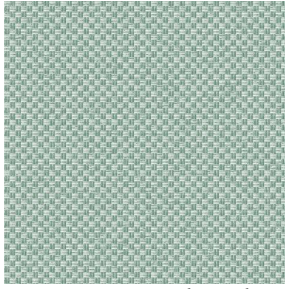
Lichtechtheit (Einheiten Klasse/8)

6

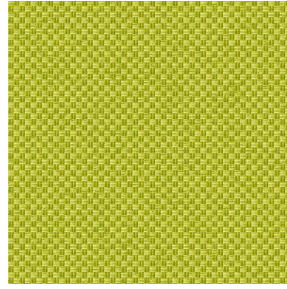
Martindale (Zyklen)

50000

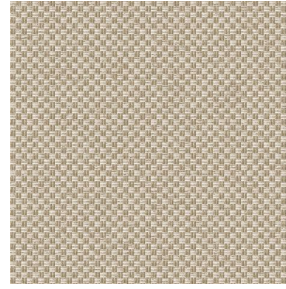
Druck design CHARLOTTE



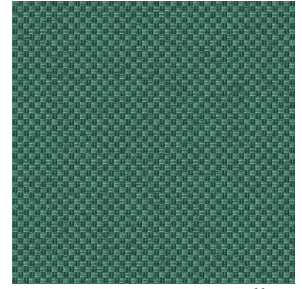
CHARLOTTE Absinthe
132



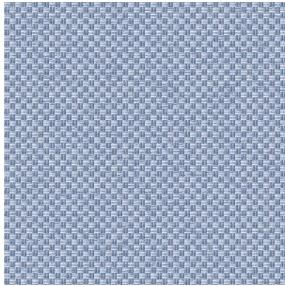
CHARLOTTE Anis 62



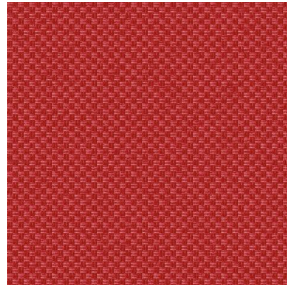
CHARLOTTE Beige 63



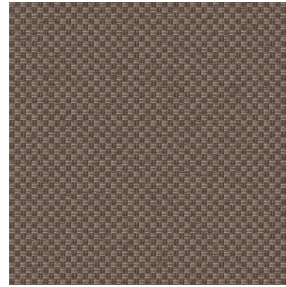
CHARLOTTE Bouteille
101



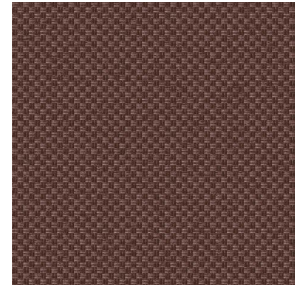
CHARLOTTE Brume 47



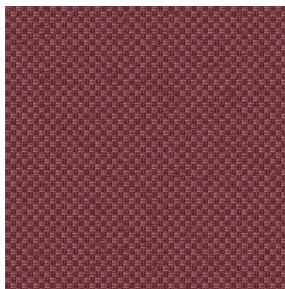
CHARLOTTE Cerise 66



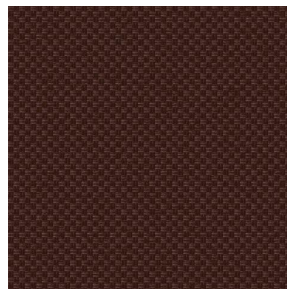
CHARLOTTE Chamois
111



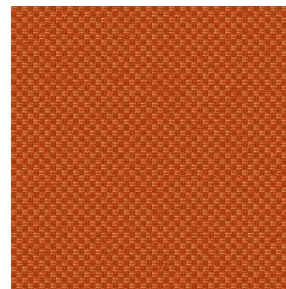
CHARLOTTE Chataigne
55



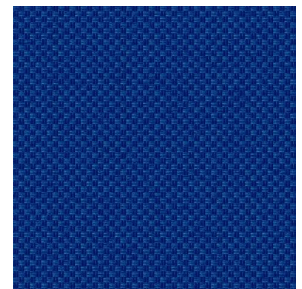
CHARLOTTE Chaudron
118



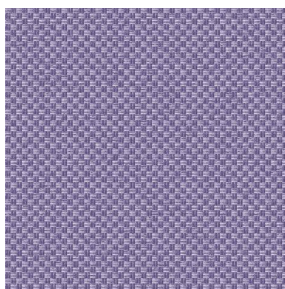
CHARLOTTE Chocolat
70



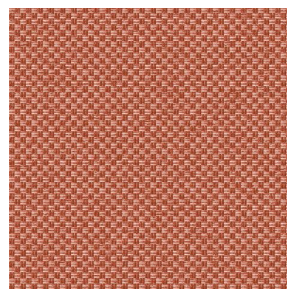
CHARLOTTE Citrouille
136



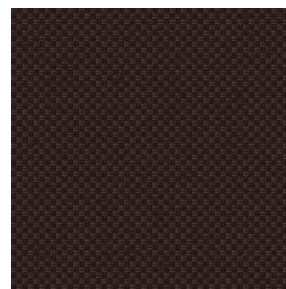
CHARLOTTE Cobalt 114



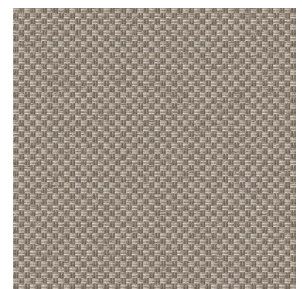
CHARLOTTE Crepuscule
45



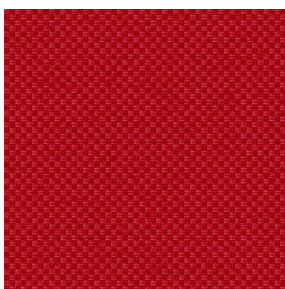
CHARLOTTE Cuivre 50



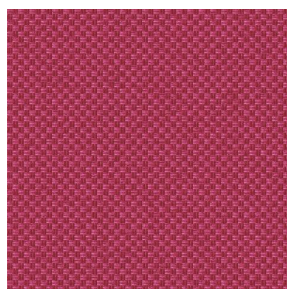
CHARLOTTE Ebene 124



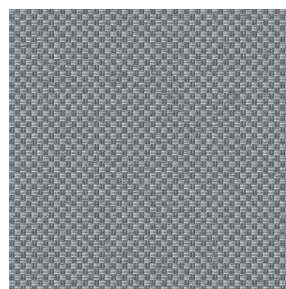
CHARLOTTE Ficelle 09



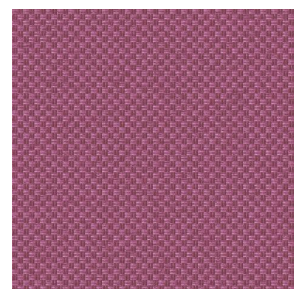
CHARLOTTE Fiesta 131



CHARLOTTE Grenat 56



CHARLOTTE Gris 97



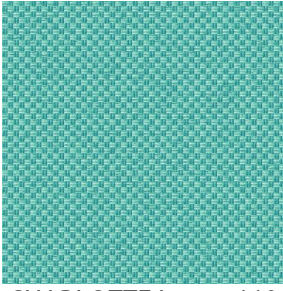
CHARLOTTE Hortensia
134

drapilux
By Sotexpro

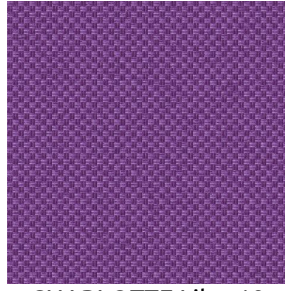
DRAPILUX GmbH - Hofenstraße 3, 77694 Kehl - Deutschland

Non-contractual photos and colors - Indicative fitting - Fitting may vary depending on support selected

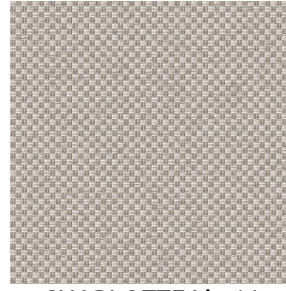
Druck design CHARLOTTE



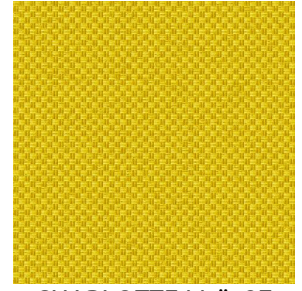
CHARLOTTE Lagon 110



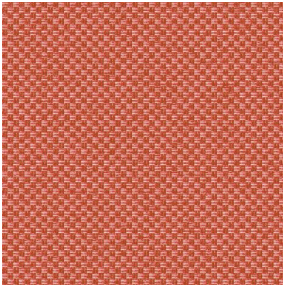
CHARLOTTE Lilas 19



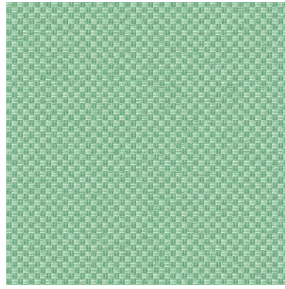
CHARLOTTE Lin 11



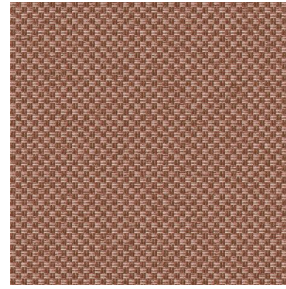
CHARLOTTE Maïs 37



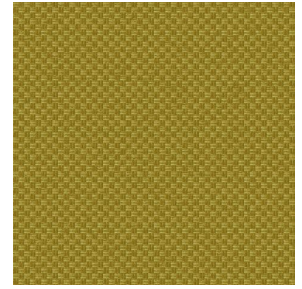
CHARLOTTE Melon 22



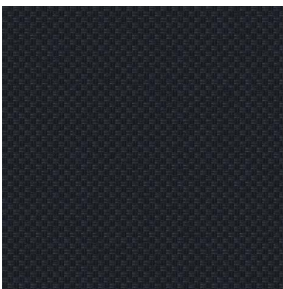
CHARLOTTE Menthe
122



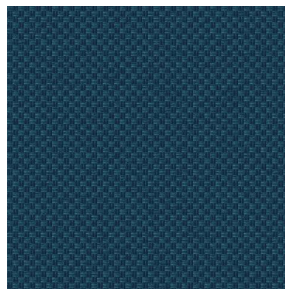
CHARLOTTE Mordore
133



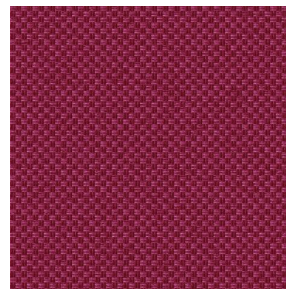
CHARLOTTE Mousse 92



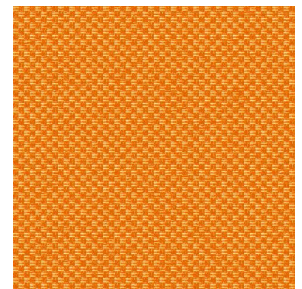
CHARLOTTE Noir 10



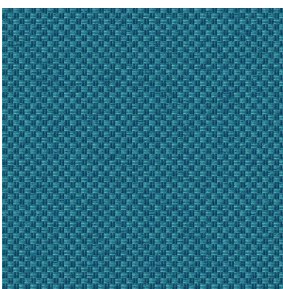
CHARLOTTE Océan 91



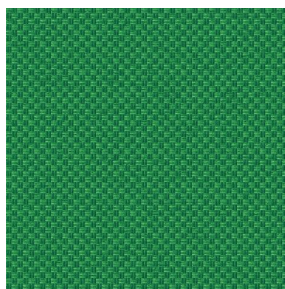
CHARLOTTE Opéra 104



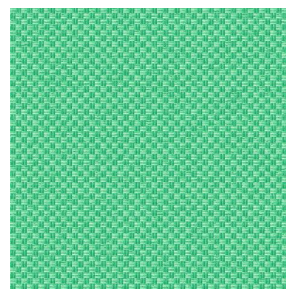
CHARLOTTE Orange 15



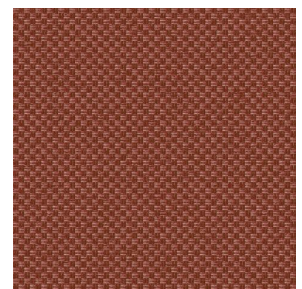
CHARLOTTE Pacifique
54



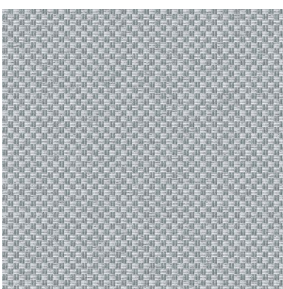
CHARLOTTE Prairie 125



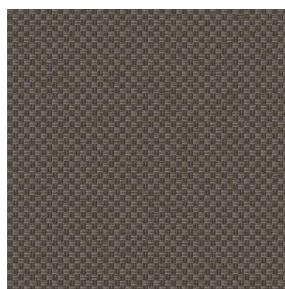
CHARLOTTE Printemps
130



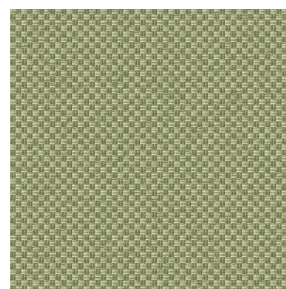
CHARLOTTE Sienne 29



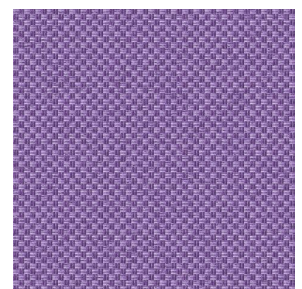
CHARLOTTE Souris 31



CHARLOTTE Terre 107



CHARLOTTE Tilleul 103



CHARLOTTE Violine 105

drapilux
By Sotexpro

DRAPILUX GmbH - Hafenstraße 3, 77694 Kehl - Deutschland

Non-contractual photos and colors - Indicative fitting - Fitting may vary depending on support selected