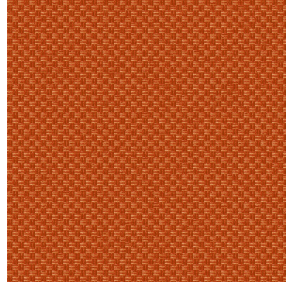


SKAILO Blanc 01  
Druck-Trägergewebe



CHARLOTTE Citrouille 136  
Druck design



Das Display berücksichtigt nicht das Druck-Trägermaterial. Die endgültige Wiedergabe kann je nach gewähltem Trägermaterial unterschiedlich sein.

## Druck-Trägergewebe **SKAILO Blanc 01** Druck design **CHARLOTTE Citrouille 136**

Unsere SKAILO-Qualität ist ein Kunstleder, das als Druckgrundware entwickelt wurde. Seine Lederoptik ist fein strukturiert, sein textiles Grundgewebe aus Polyester/Baumwolle verleiht ihm Flexibilität. Aufgrund der Flexibilität und den guten Werten, bezogen auf die Abriebfestigkeit, ist diese Qualität ideal für die Herstellung von Bettkopfteilen, Sesseln und Hockern. Dank unserer neuen Drucktechnologie im Direktdruck, können wir SKAILO exakt auf das Grundgewebe abstimmen. Diese Technik garantiert eine optimale Wiedergabe der Designs und Faben.

**Applications** Valence-Vorhänge - Bettkopf

**Zusammensetzung** poly-coton enduction polyuréthane

**Gewicht** 435 g/m<sup>2</sup>

**Breite** 138 cm

**Stoffrichtung** Rückwärts- oder Standardrichtung

**Eignung** ↔ 0.0 cm ↓ 0.0 cm

**Pflegehinweis**     

**Beschriftung**

**Mindestbestellmenge** 35

## Technische Eigenschaften

Beständigkeit

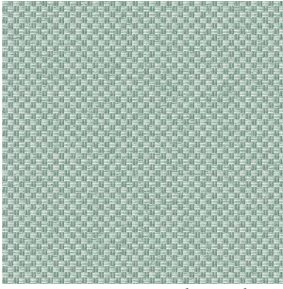
Lichtechtheit (Einheiten Klasse/8)

6

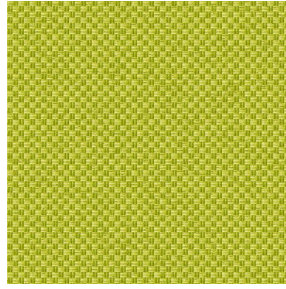
Martindale (Zyklen)

50000

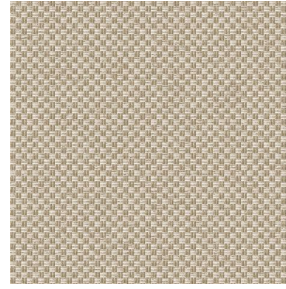
# Druck design CHARLOTTE



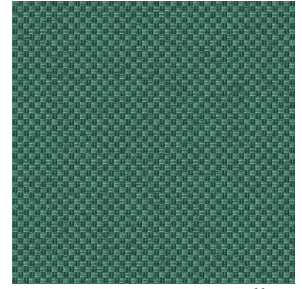
CHARLOTTE Absinthe  
132



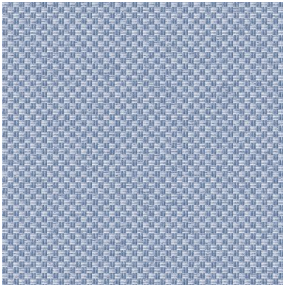
CHARLOTTE Anis 62



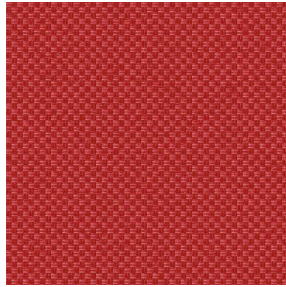
CHARLOTTE Beige 63



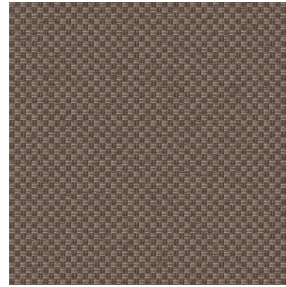
CHARLOTTE Bouteille  
101



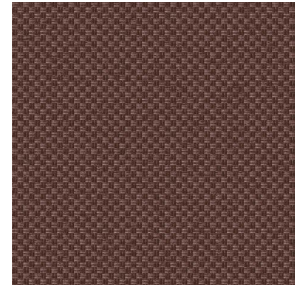
CHARLOTTE Brume 47



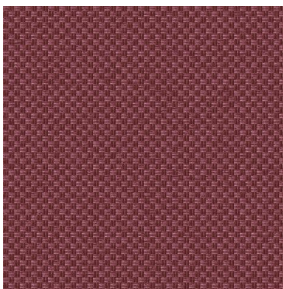
CHARLOTTE Cerise 66



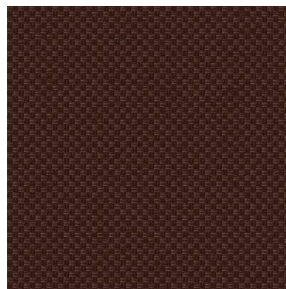
CHARLOTTE Chamois  
111



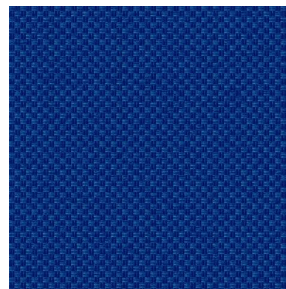
CHARLOTTE Chataigne  
55



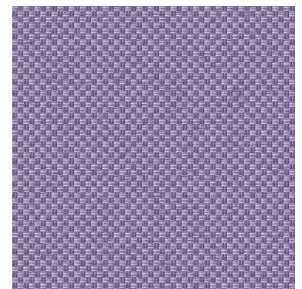
CHARLOTTE Chaudron  
118



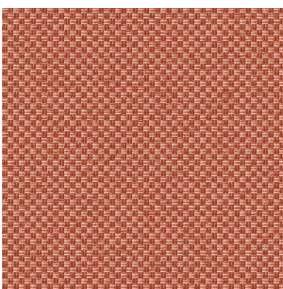
CHARLOTTE Chocolat  
70



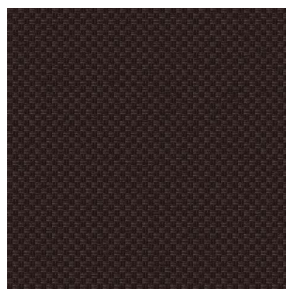
CHARLOTTE Cobalt 114



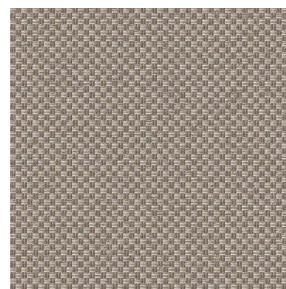
CHARLOTTE Crepuscule  
45



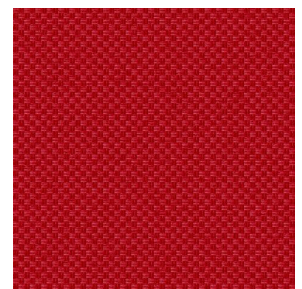
CHARLOTTE Cuivre 50



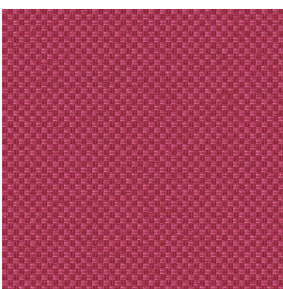
CHARLOTTE Ebene 124



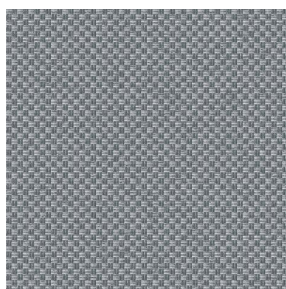
CHARLOTTE Ficelle 09



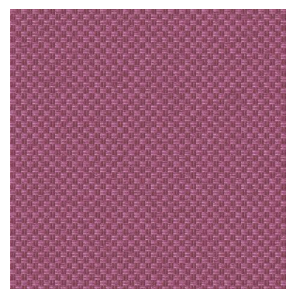
CHARLOTTE Fiesta 131



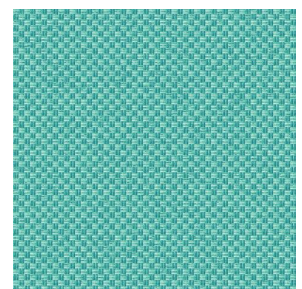
CHARLOTTE Grenat 56



CHARLOTTE Gris 97



CHARLOTTE Hortensia  
134



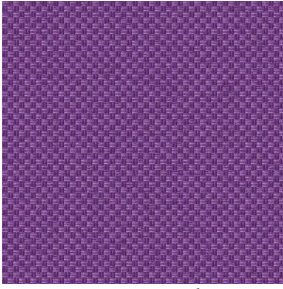
CHARLOTTE Lagon 110

**drapilux**  
By Sotexpro

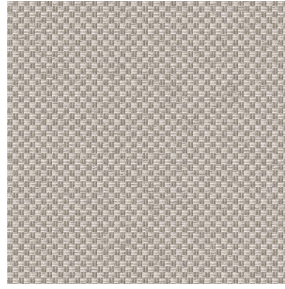
DRAPILUX GmbH - Hofenstraße 3, 77694 Kehl - Deutschland

Non-contractual photos and colors - Indicative fitting - Fitting may vary depending on support selected

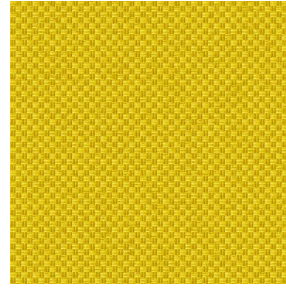
# Druck design CHARLOTTE



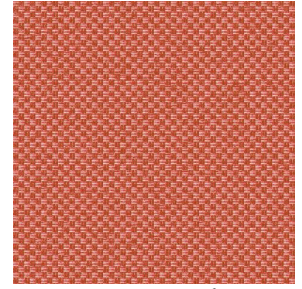
CHARLOTTE Lilas 19



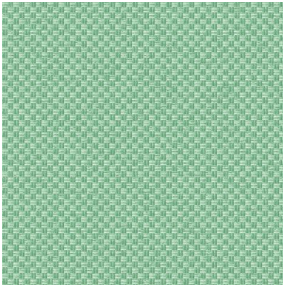
CHARLOTTE Lin 11



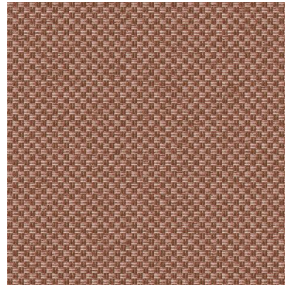
CHARLOTTE Mais 37



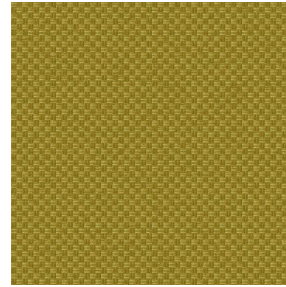
CHARLOTTE Melon 22



CHARLOTTE Menthe  
122



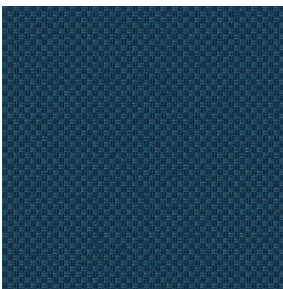
CHARLOTTE Mordore  
133



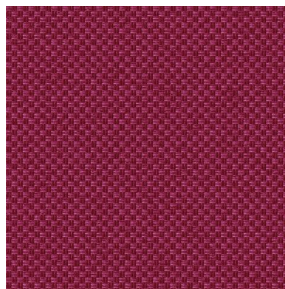
CHARLOTTE Mousse 92



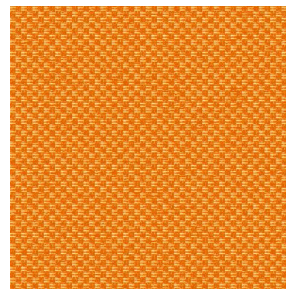
CHARLOTTE Noir 10



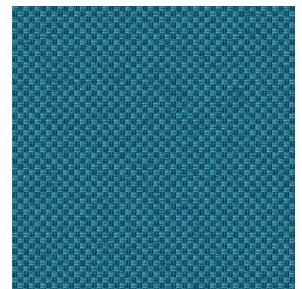
CHARLOTTE Océan 91



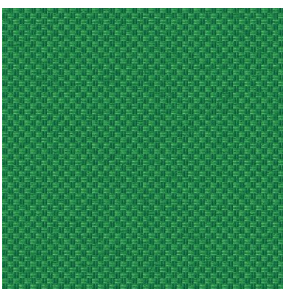
CHARLOTTE Opéra 104



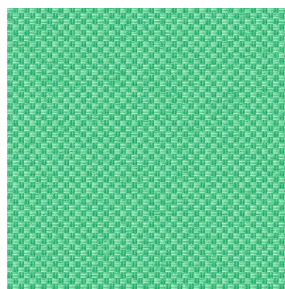
CHARLOTTE Orange 15



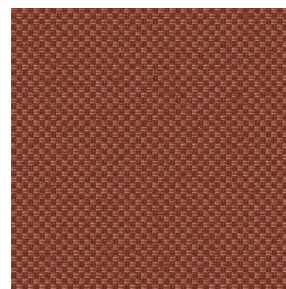
CHARLOTTE Pacifique  
54



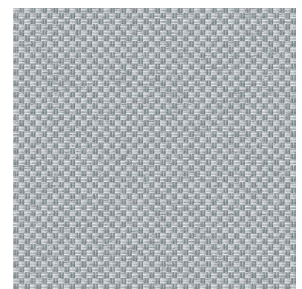
CHARLOTTE Prairie 125



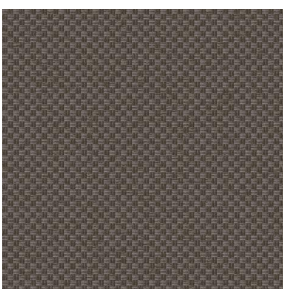
CHARLOTTE Printemps  
130



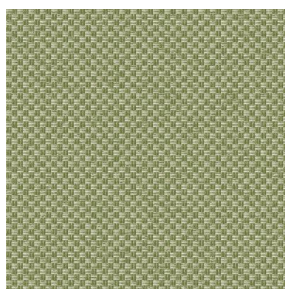
CHARLOTTE Sienne 29



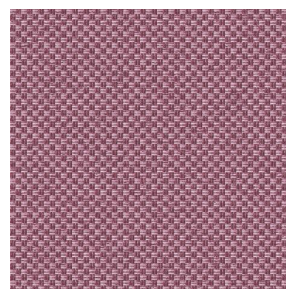
CHARLOTTE Souris 31



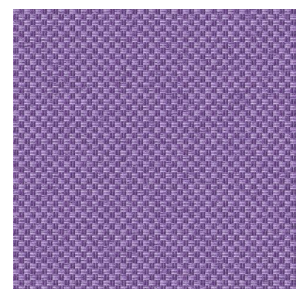
CHARLOTTE Terre 107



CHARLOTTE Tilleul 103



CHARLOTTE Vieux rose  
64



CHARLOTTE Violine 105

**drapilux**  
By Sotexpro

DRAPILUX GmbH - Hafenstraße 3, 77694 Kehl - Deutschland

Non-contractual photos and colors - Indicative fitting - Fitting may vary depending on support selected