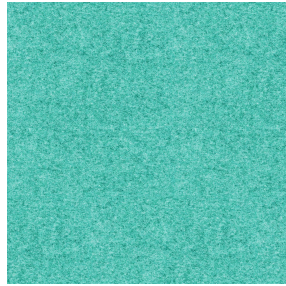


**SIENTO RECYCLE UNI Lin 11**  
Druck-Trägergewebe



**ELAINA Pacifique 54**  
Druck design



Das Display berücksichtigt nicht das Druck-Trägermaterial. Die endgültige Wiedergabe kann je nach gewähltem Trägermaterial unterschiedlich sein.



## Druck-Trägergewebe **SIENTO** **RECYCLE UNI Lin 11** Druck design **ELAINA Pacifique 54**

Natté lourd, le Siento Recyclé est tissé avec des fils teints mélangés ce qui lui confère cet aspect rustique et chiné. La chaîne et la trame sont en polyester FR recyclé. Tissu utilisable en support d'impression, attention le fond a une incidence sur le rendu coloristique du dessin

### Technische Eigenschaften



Feuerfestigkeit



Wärmeschutz



Akustik



Recycled fabrics

**Applications** Falzgardinen - Flächenvorhänge - Bettwäsche - Valence-Vorhänge - Bestuhlung - Bettläufer - Vorhänge - Kissen

**Zusammensetzung** 80% recycelter feuerfester Polyester / 20% feuerfester Polyester

**Gewicht** 330 g/m<sup>2</sup>

**Breite** 290 cm

**Stoffrichtung** Rückwärts- oder Standardrichtung

**Eignung** ↔ 0.0 cm ↓ 0.0 cm

**Pflegehinweis**     

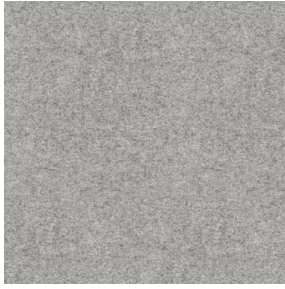
**Beschriftung** France Terre Textile / OEKO-TEX STANDARD 100 Recyclé

**Mindestbestellmenge** 25

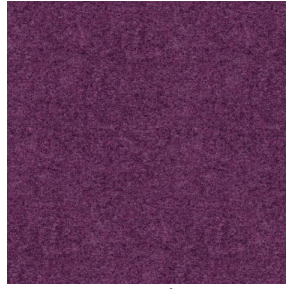
## Technische Eigenschaften

Feuerfestigkeit	M1 / B1 / IMO PASS / UNI 8456 / 9174 Classe Uno
Akustik	Schalldämpfungskoeffizient (NRC) : <b>0.73</b>
Optischer Index	Lichtreflexion : <b>41 %</b>
	Lichtabsorption : <b>51 %</b>
	Lichtdurchlässigkeit : <b>8 %</b>
Thermaler Index	Sonnenreflexion : <b>55 %</b>
	Sonnenabsorption : <b>29 %</b>
	Sonnendurchlässigkeit : <b>16 %</b>
	UV-Durchlässigkeit : <b>5 %</b>
	Gtot : <b>Gt 39 % Fc 66 %</b>
Beständigkeit	Lichtechtheit (Einheiten Klasse/8) <b>6</b>
	Pilling <b>4-5</b>
	Formstabilität (%)
	Verzerrung <b>-1,5</b>
	Querfäden <b>-1,5</b>
	Martindale (Zyklen) <b>90000</b>
	Bruchdehnung
	Verzerrung <b>41</b>
	Querfäden <b>44</b>
	Bruchlast (daN)
Verzerrung <b>180</b>	
Querfäden <b>150</b>	

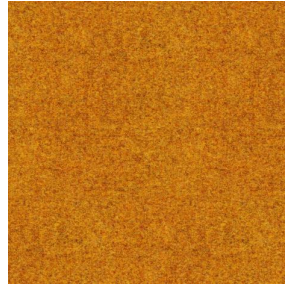
# Druck design ELAINA



ELAINA Gris 91



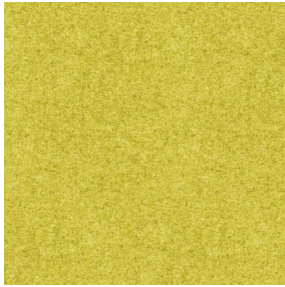
ELAINA Violine 105



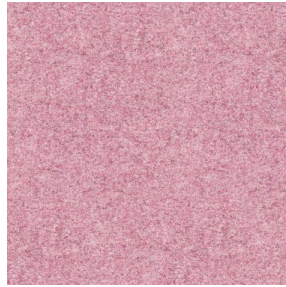
ELAINA Ocre 03



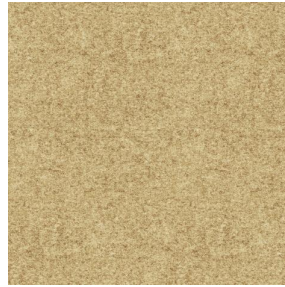
ELAINA Lin 11



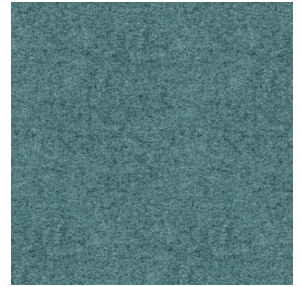
ELAINA Bergamote 121



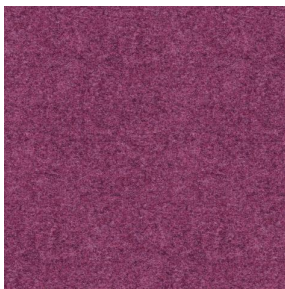
ELAINA Rose 129



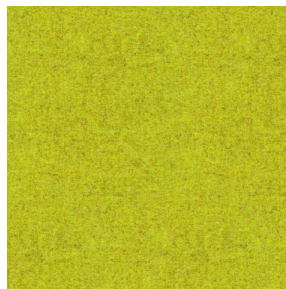
ELAINA Beige 63



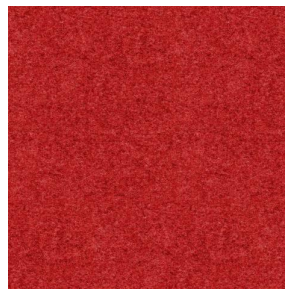
ELAINA Céladon 135



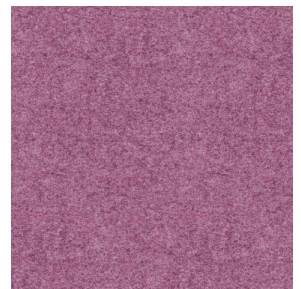
ELAINA Saphir 106



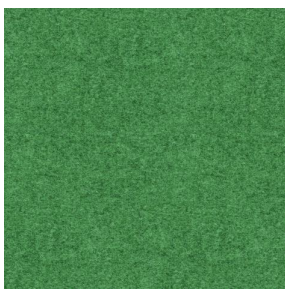
ELAINA Anis 62



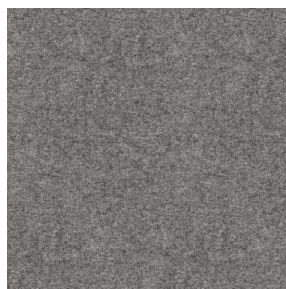
ELAINA Rouge 21



ELAINA Hortensia 134



ELAINA Prairie 125



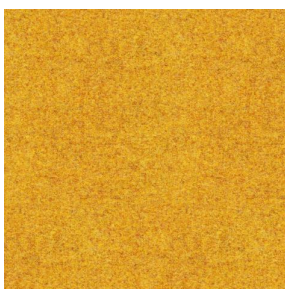
ELAINA Graphite 77



ELAINA Lierre 124



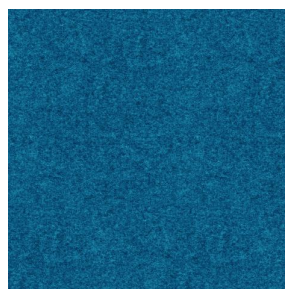
ELAINA Naturel 26



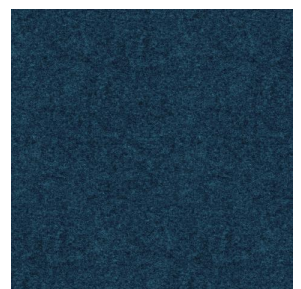
ELAINA Genêt 06



ELAINA Ivoire 115



ELAINA Gentiane 16



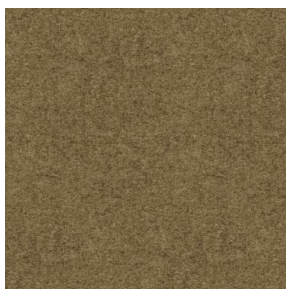
ELAINA Navy 120

**drapilux**  
By Sotexpro

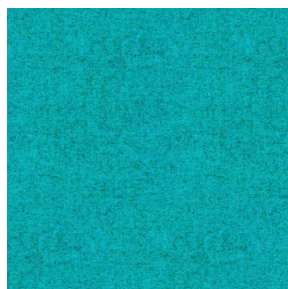
DRAPILUX GmbH - Hofenstraße 3, 77694 Kehl - Deutschland

Non-contractual photos and colors - Indicative fitting - Fitting may vary depending on support selected

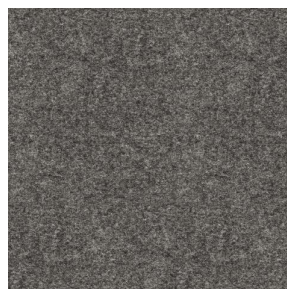
## Druck design ELAINA



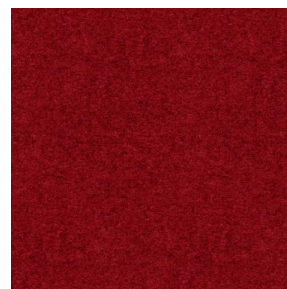
ELAINA Chamois 111



ELAINA Turquoise 53



ELAINA Anthracite 38



ELAINA Fiesta 131