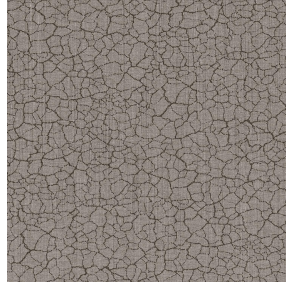




SATIN BPI 00
Druck-Trägergewebe



TERRA Chamois 111
Druck design



Druck-Trägergewebe **SATIN BPI 00** Druck design **TERRA Chamois 111**

Licht filternder Träger für Digitaldruck.

Technische Eigenschaften



Feuerfestigkeit

Applications Faltgardinen - Flächenvorhänge - Vorhänge

Zusammensetzung 100% feuerfester Polyester

Gewicht 220 g/m²

Breite 280 cm

Stoffrichtung Rückwärtsrichtung

Eignung ↔ 0.0 cm ↓ 0.0 cm

Pflegehinweis

Beschriftung France Terre Textile / OEKO-TEX STANDARD 100

Mindestbestellmenge 25



Das Display berücksichtigt nicht das Druck-Trägermaterial. Die endgültige Wiedergabe kann je nach gewähltem Trägermaterial unterschiedlich sein.

Technische Eigenschaften

Feuerfestigkeit

M1 / B1 / IMO PASS

Beständigkeit

Formstabilität (%)

Verzerrung -1

Querfäden -1

Bruchdehnung

Verzerrung 42

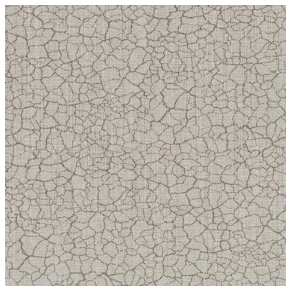
Querfäden 22

Bruchlast (daN)

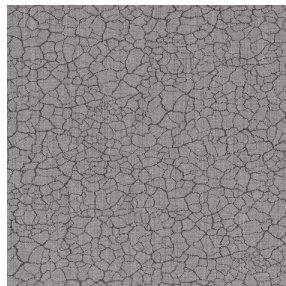
Verzerrung 160

Querfäden 140

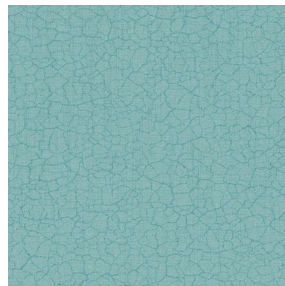
Druck design TERRA



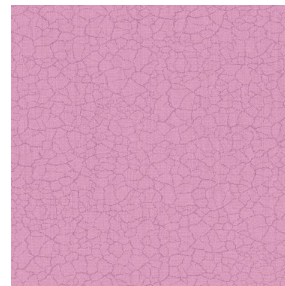
TERRA Ficelle 09



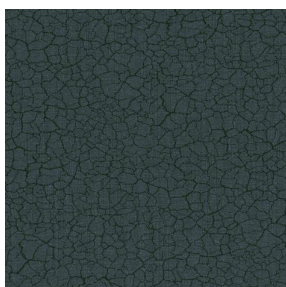
TERRA Taupe 95



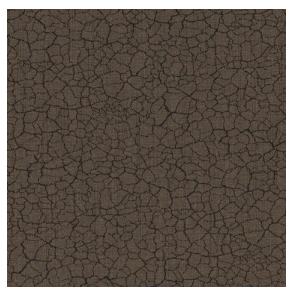
TERRA Ecume 82



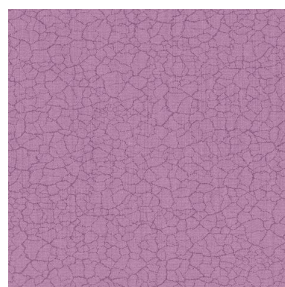
TERRA Rose 129



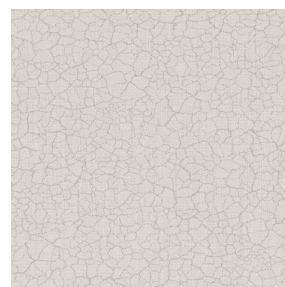
TERRA Fusain 71



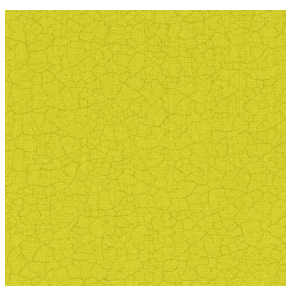
TERRA Brun 23



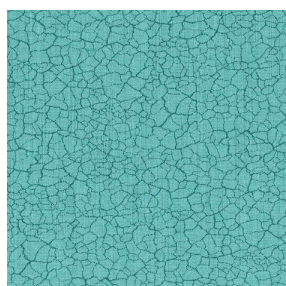
TERRA Hortensia 134



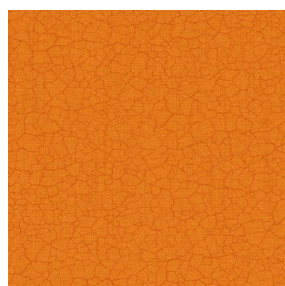
TERRA Naturel 26



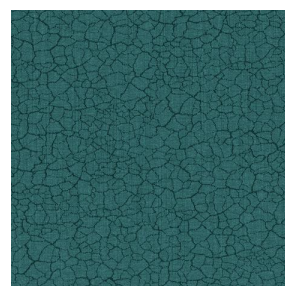
TERRA Anis 62



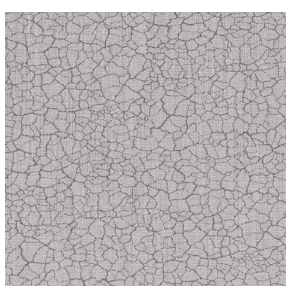
TERRA Lagon 110



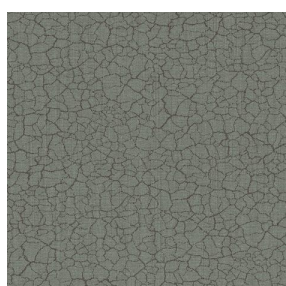
TERRA Citrouille 136



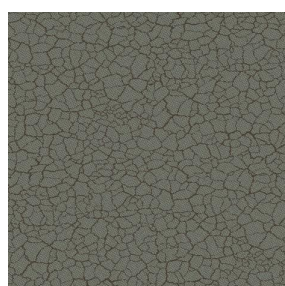
TERRA Pacifique 54



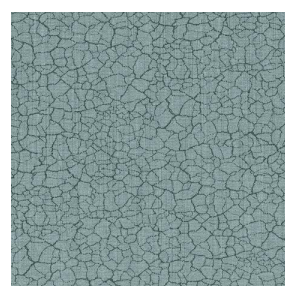
TERRA Titanium 98



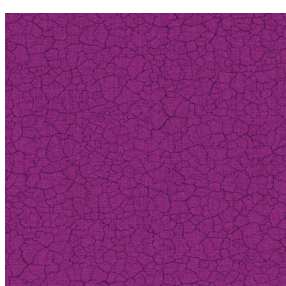
TERRA Graphite 77



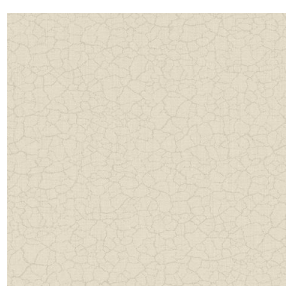
TERRA Gris 97



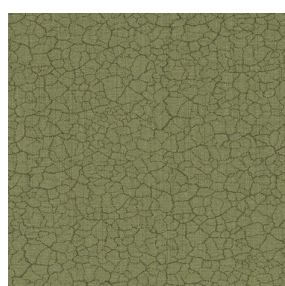
TERRA Ardoise 87



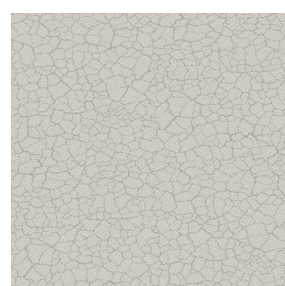
TERRA Violine 105



TERRA Chanvre 72



TERRA Argile 85



TERRA Lin 11

drapilux
By Sotexpro

DRAPILUX GmbH - Hofenstraße 3, 77694 Kehl - Deutschland

Non-contractual photos and colors - Indicative fitting - Fitting may vary depending on support selected

Druck design TERRA



TERRA Genêt 06



TERRA Céladon 135



TERRA Ebene 113



TERRA Ocre 03