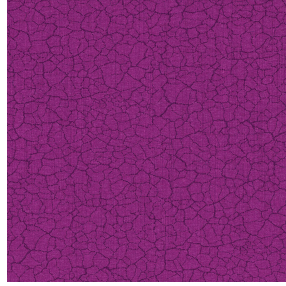




SATIN BPI 00
Druck-Trägergewebe



TERRA Violine 105
Druck design



Druck-Trägergewebe **SATIN BPI 00** Druck design **TERRA Violine 105**

Licht filternder Träger für Digitaldruck.

Technische Eigenschaften



Feuerfestigkeit

Applications Faltgardinen - Flächenvorhänge - Vorhänge

Zusammensetzung 100% feuerfester Polyester

Gewicht 220 g/m²

Breite 140 cm

Stoffrichtung Standardrichtung

Eignung ↔ 0.0 cm ↓ 0.0 cm

Pflegehinweis

Beschriftung France Terre Textile / OEKO-TEX STANDARD 100

Mindestbestellmenge 25



Das Display berücksichtigt nicht das Druck-Trägermaterial. Die endgültige Wiedergabe kann je nach gewähltem Trägermaterial unterschiedlich sein.

Technische Eigenschaften

Feuerfestigkeit

M1 / B1 / IMO PASS

Beständigkeit

Formstabilität (%)

Verzerrung -1

Querfäden -1

Bruchdehnung

Verzerrung 42

Querfäden 22

Bruchlast (daN)

Verzerrung 160

Querfäden 140

Druck design TERRA



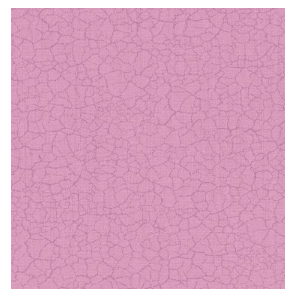
TERRA Ficelle 09



TERRA Taupe 95



TERRA Ecume 82



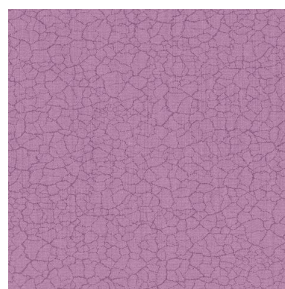
TERRA Rose 129



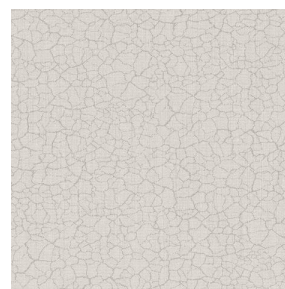
TERRA Fusain 71



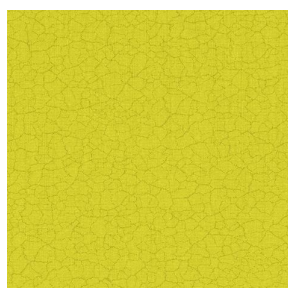
TERRA Brun 23



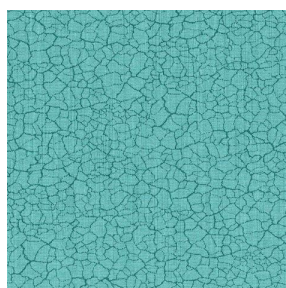
TERRA Hortensia 134



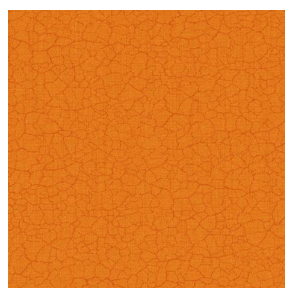
TERRA Naturel 26



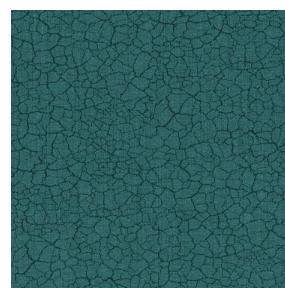
TERRA Anis 62



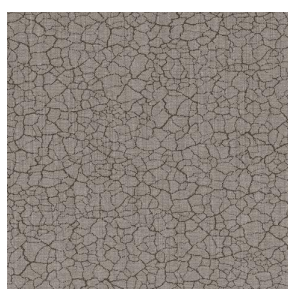
TERRA Lagon 110



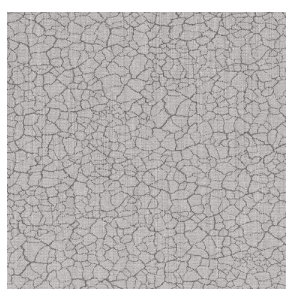
TERRA Citrouille 136



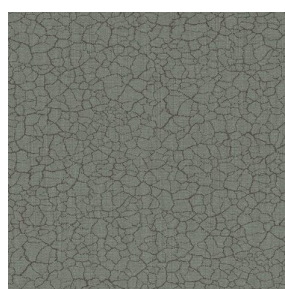
TERRA Pacifique 54



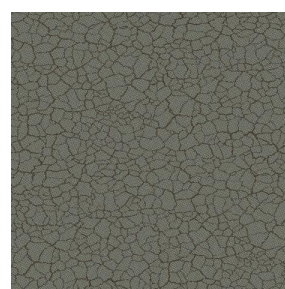
TERRA Chamois 111



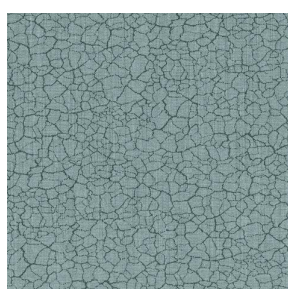
TERRA Titanium 98



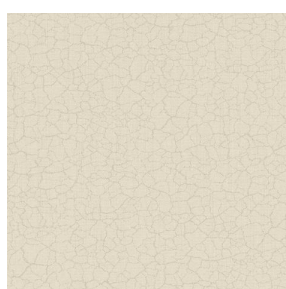
TERRA Graphite 77



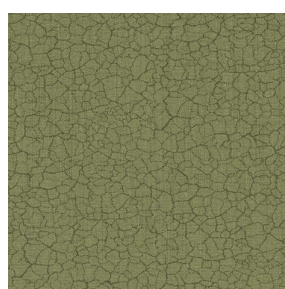
TERRA Gris 97



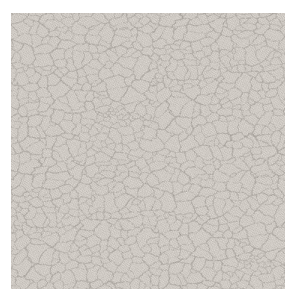
TERRA Ardoise 87



TERRA Chanvre 72



TERRA Argile 85



TERRA Lin 11

drapilux
By Sotexpro

DRAPILUX GmbH - Hofenstraße 3, 77694 Kehl - Deutschland

Non-contractual photos and colors - Indicative fitting - Fitting may vary depending on support selected

Druck design TERRA



TERRA Genêt 06



TERRA Céladon 135



TERRA Ebene 113



TERRA Ocre 03