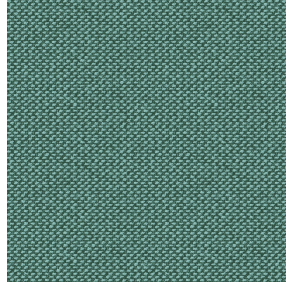




POL 00
Druck-Trägergewebe



METIS Absinthe 132
Druck design



Druck-Trägergewebe **POL 00** Druck design **METIS Absinthe 132**

Druck-Trägergewebe.

Technische Eigenschaften



Feuerfestigkeit

Applications Bettwäsche - Innenfutter - Bettläufer

Zusammensetzung 100% Polyester

Gewicht 80 g/m²

Breite 180 cm

Stoffrichtung Standardrichtung

Eignung ↔ 0.0 cm ↓ 0.0 cm

Pflegehinweis

Beschriftung France Terre Textile

Mindestbestellmenge 25



Das Display berücksichtigt nicht das Druck-Trägermaterial. Die endgültige Wiedergabe kann je nach gewähltem Trägermaterial unterschiedlich sein.

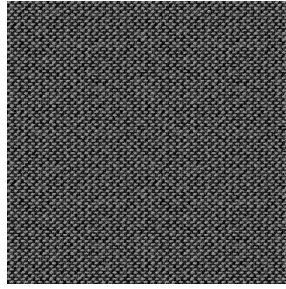
Technische Eigenschaften

Feuerfestigkeit	NF 12952		
Optischer Index	Lichtreflexion :	0 %	
	Lichtabsorption :	0 %	
	Lichtdurchlässigkeit :	0 %	
Thermaler Index	Sonnenreflexion :	0 %	
	Sonnenabsorption :	0 %	
	Sonnendurchlässigkeit :	0 %	
	UV-Durchlässigkeit :	0 %	
	Gtot :	Gt 0 % Fc 0 %	
	Beständigkeit	Lichtehtheit (Einheiten Klasse/8)	0
Martindale (Zyklen)		0	
Bruchdehnung		Verzerrung	0
		Querfäden	0
Bruchlast (daN)		Verzerrung	0
		Querfäden	0

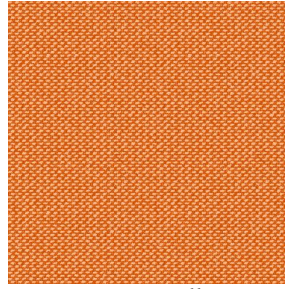
Druck design METIS



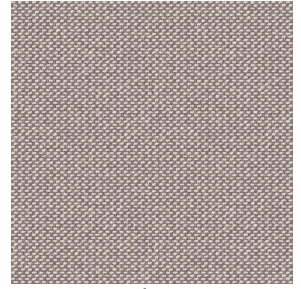
METIS Gentiane 16



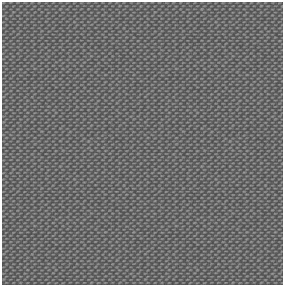
METIS Noir 10



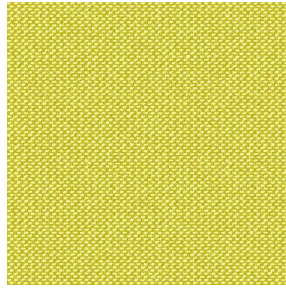
METIS Citrouille 136



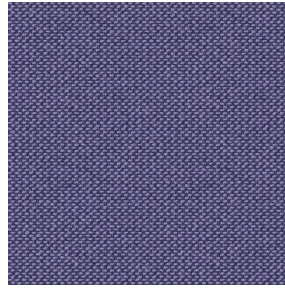
METIS Chanvre 72



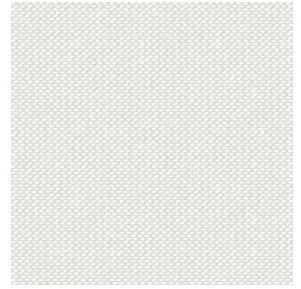
METIS Gris 97



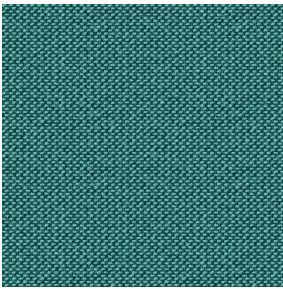
METIS Bergamote 121



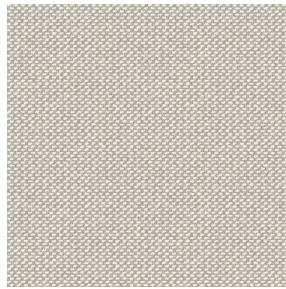
METIS Violine 105



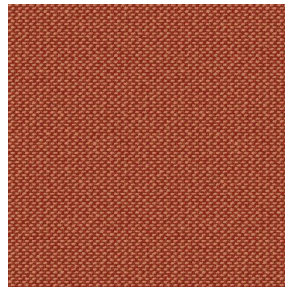
METIS Perle 96



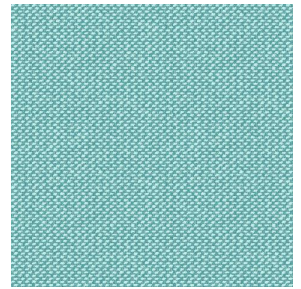
METIS Céladon 135



METIS Lin 11



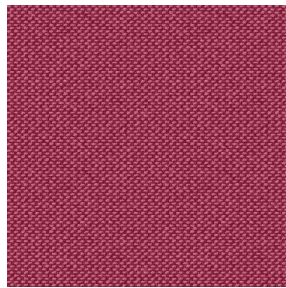
METIS Sienne 29



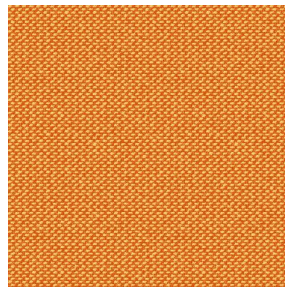
METIS Lagon 110



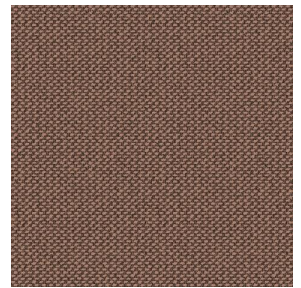
METIS Cobalt 114



METIS Framboise 81



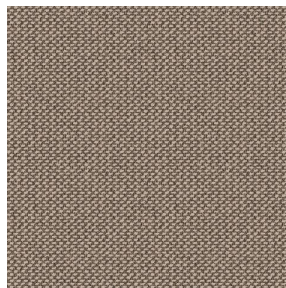
METIS Abricot 08



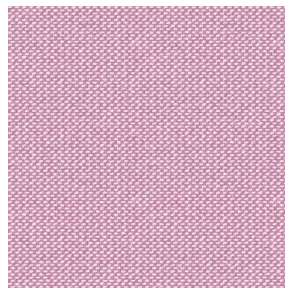
METIS Chamois 111



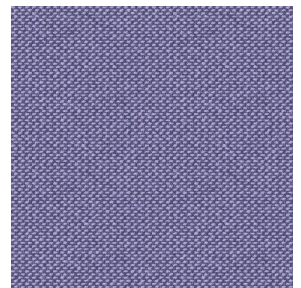
METIS Ivoire 115



METIS Ficelle 09



METIS Rose 129



METIS Parme 79

drapilux
By Sotexpro

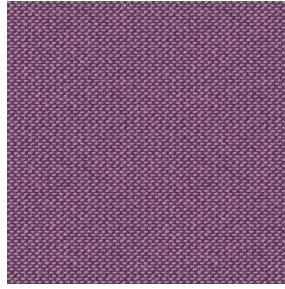
DRAPILUX GmbH - Hofenstraße 3, 77694 Kehl - Deutschland

Non-contractual photos and colors - Indicative fitting - Fitting may vary depending on support selected

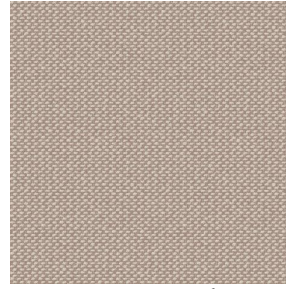
Druck design METIS



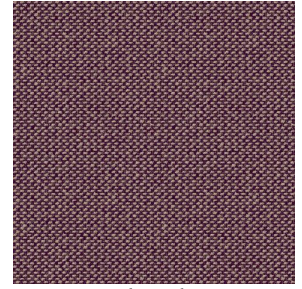
METIS Cactus 36



METIS Hortensia 134



METIS Naturel 26



METIS Chaudron 118