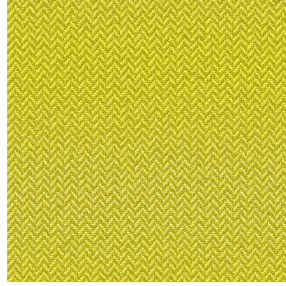




NOSUN BPI 00
Druck-Trägergewebe



SCOURTIN Bergamote 121
Druck design



Das Display berücksichtigt nicht das Druck-Trägermaterial. Die endgültige Wiedergabe kann je nach gewähltem Trägermaterial unterschiedlich sein.

Druck-Trägergewebe **NOSUN BPI 00** Druck design **SCOURTIN Bergamote 121**

Support pour impression effet natté relié occultant grâce à son envers floqué acrylique blanc

Technische Eigenschaften

Applications Faltgardinen - Flächenvorhänge - Vorhänge

Zusammensetzung Polyester/acrylique

Gewicht 400 g/m²

Breite 280 cm

Stoffrichtung Rückwärtsrichtung

Eignung ↔ cm ↓ cm

Pflegehinweis     

Beschriftung

Mindestbestellmenge 25

Technische Eigenschaften

Beständigkeit

Formstabilität (%)

Verzerrung 0

Querfäden 0

Bruchdehnung

Verzerrung 40

Querfäden 32

Bruchlast (daN)

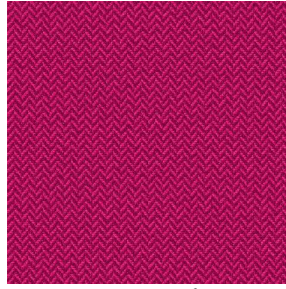
Verzerrung 190

Querfäden 93

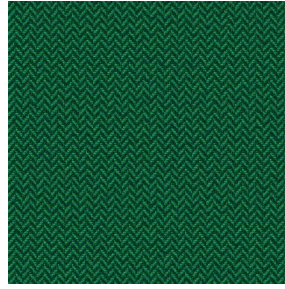
Druck design SCOURTIN



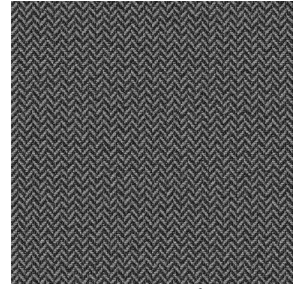
SCOURTIN Beige 63



SCOURTIN Fuchsia 33



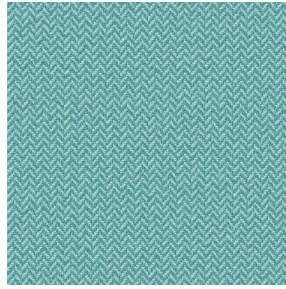
SCOURTIN Sapin 126



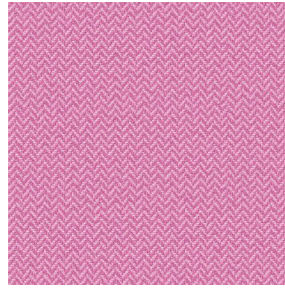
SCOURTIN Anthracite
38



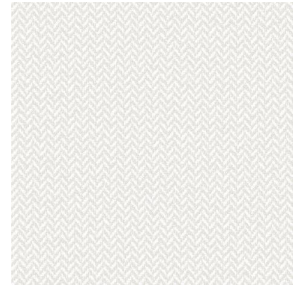
SCOURTIN Violine 105



SCOURTIN Pacifique 54



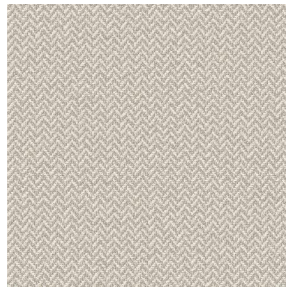
SCOURTIN Rose 129



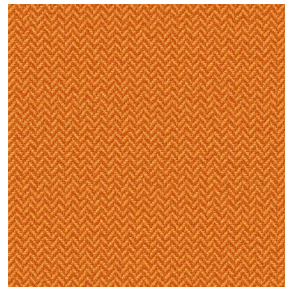
SCOURTIN Blanc 01



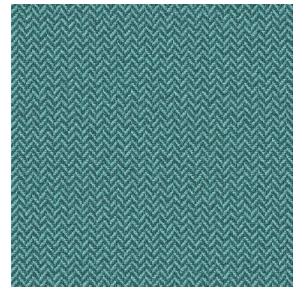
SCOURTIN Lin 11



SCOURTIN Naturel 26



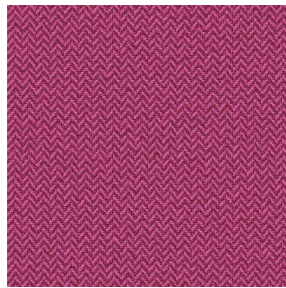
SCOURTIN Citrouille
136



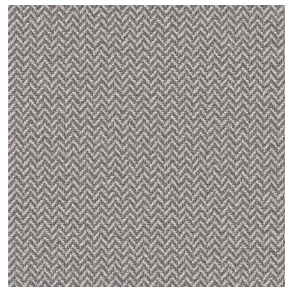
SCOURTIN Turquoise 53



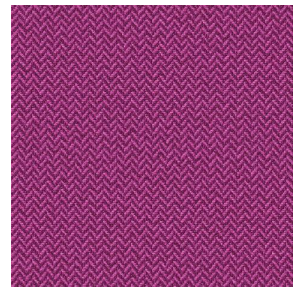
SCOURTIN Brun 23



SCOURTIN Hortensia
134



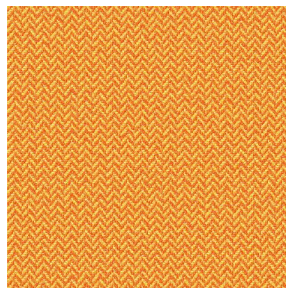
SCOURTIN Orage 123



SCOURTIN Rubis 59



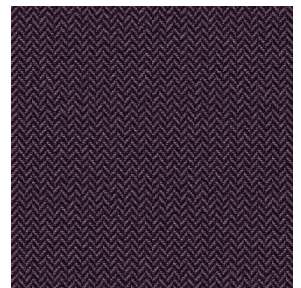
SCOURTIN Ficelle 09



SCOURTIN Maïs 37



SCOURTIN Céladon 135



SCOURTIN Ebene 113

drapilux
By Sotexpro

DRAPILUX GmbH - Hofenstraße 3, 77694 Kehl - Deutschland

Non-contractual photos and colors - Indicative fitting - Fitting may vary depending on support selected

Druck design SCOURTIN



SCOURTIN Tourterelle
138



SCOURTIN Titanium 98



SCOURTIN Lagon 110



SCOURTIN Gris 97