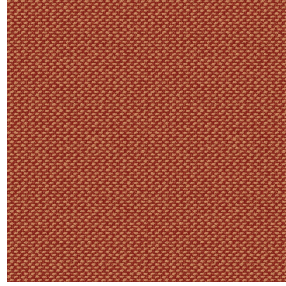




NOSUN BPI 00
Druck-Trägergewebe



METIS Sienne 29
Druck design



Druck-Trägergewebe **NOSUN BPI 00** Druck design **METIS Sienne 29**

Support pour impression effet natté reliéé occultant grâce à son envers floqué acrylique blanc

Technische Eigenschaften

Applications **Faltgardinen - Flächenvorhänge - Vorhänge**

Zusammensetzung **Polyester/acrylique**

Gewicht **400 g/m²**

Breite **280 cm**

Stoffrichtung **Rückwärtsrichtung**

Eignung **↔ 0.0 cm ↓ 0.0 cm**

Pflegehinweis     

Beschriftung

Mindestbestellmenge **25**



Das Display berücksichtigt nicht das Druck-Trägermaterial. Die endgültige Wiedergabe kann je nach gewähltem Trägermaterial unterschiedlich sein.

Technische Eigenschaften

Beständigkeit

Formstabilität (%)

Verzerrung **0**

Querfäden **0**

Bruchdehnung

Verzerrung **40**

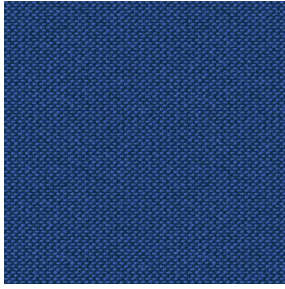
Querfäden **32**

Bruchlast (daN)

Verzerrung **190**

Querfäden **93**

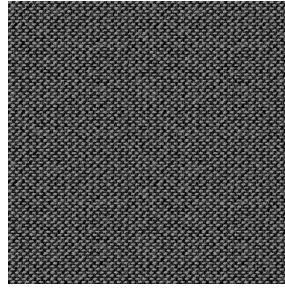
Druck design METIS



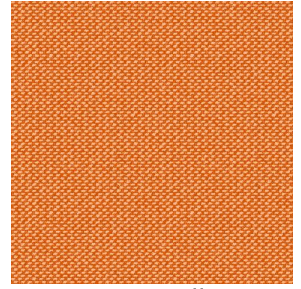
METIS Gentiane 16



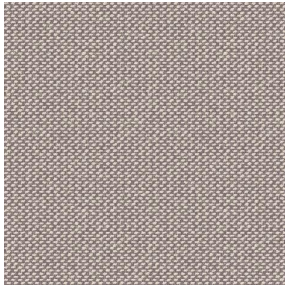
METIS Absinthe 132



METIS Noir 10



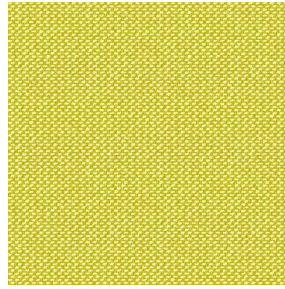
METIS Citrouille 136



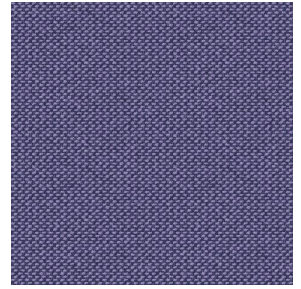
METIS Chanvre 72



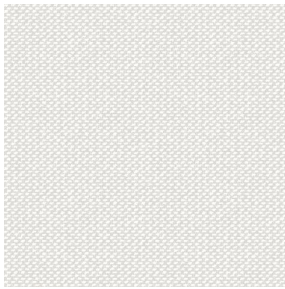
METIS Gris 97



METIS Bergamote 121



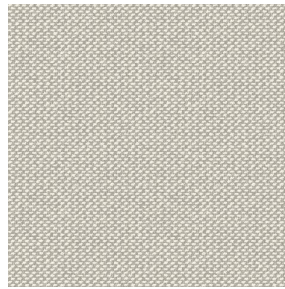
METIS Violine 105



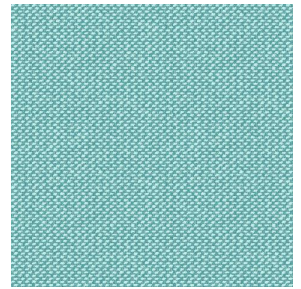
METIS Perle 96



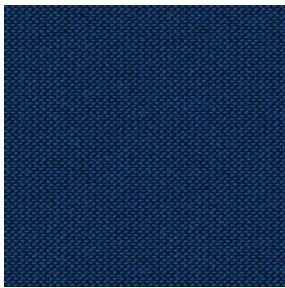
METIS Céladon 135



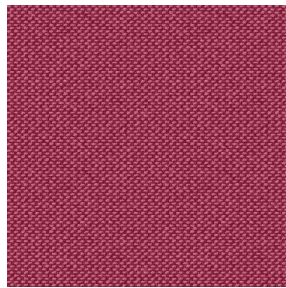
METIS Lin 11



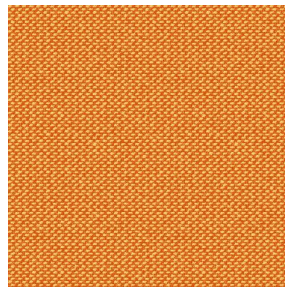
METIS Lagon 110



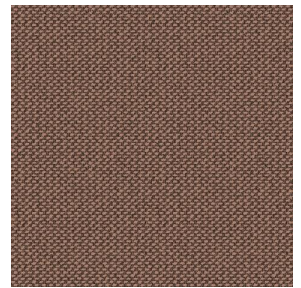
METIS Cobalt 114



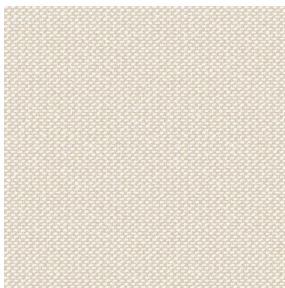
METIS Framboise 81



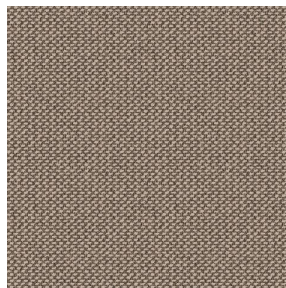
METIS Abricot 08



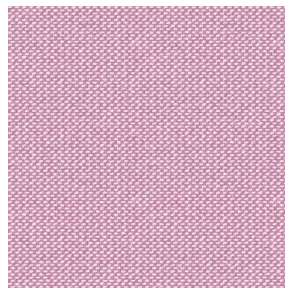
METIS Chamois 111



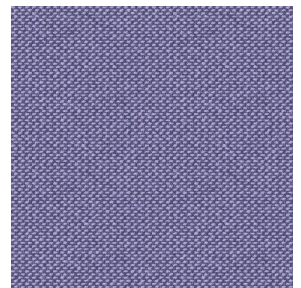
METIS Ivoire 115



METIS Ficelle 09



METIS Rose 129



METIS Parme 79

drapilux
By Sotexpro

DRAPILUX GmbH - Hofenstraße 3, 77694 Kehl - Deutschland

Non-contractual photos and colors - Indicative fitting - Fitting may vary depending on support selected

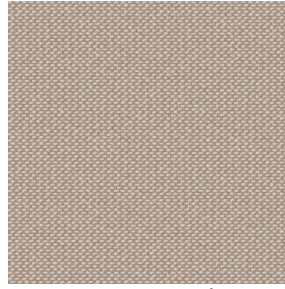
Druck design METIS



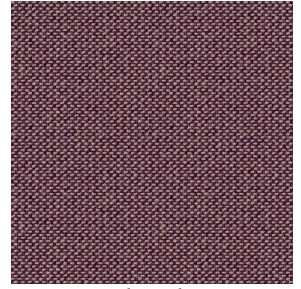
METIS Cactus 36



METIS Hortensia 134



METIS Naturel 26



METIS Chaudron 118