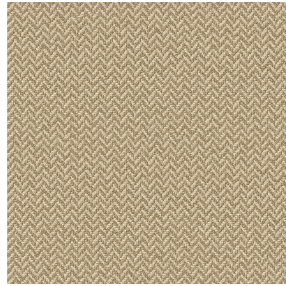




NOSUN BPI 00
Druck-Trägergewebe



SCOURTIN Beige 63
Druck design

Druck-Trägergewebe **NOSUN BPI 00** Druck design **SCOURTIN Beige 63**

Support pour impression effet natté relliéfé occultant grâce à son envers floqué acrylique blanc

Technische Eigenschaften

Applications Falzgardinen - Flächenvorhänge - Vorhänge

Zusammensetzung Polyester/acrylique

Gewicht 400 g/m²

Breite 280 cm

Stoffrichtung Rückwärtsrichtung

Eignung ↔ cm ↓ cm

Pflegehinweis     

Beschriftung

Mindestbestellmenge 25



Das Display berücksichtigt nicht das Druck-Trägermaterial. Die endgültige Wiedergabe kann je nach gewähltem Trägermaterial unterschiedlich sein.

Technische Eigenschaften

Beständigkeit

Formstabilität (%)

Verzerrung **0**

Querfäden **0**

Bruchdehnung

Verzerrung **40**

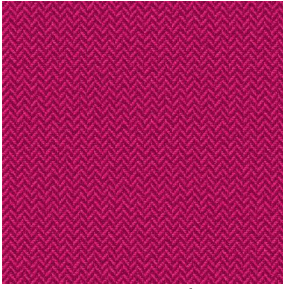
Querfäden **32**

Bruchlast (daN)

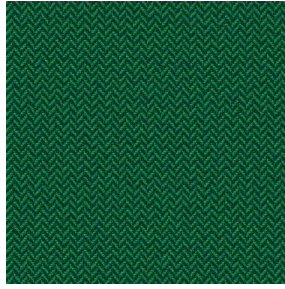
Verzerrung **190**

Querfäden **93**

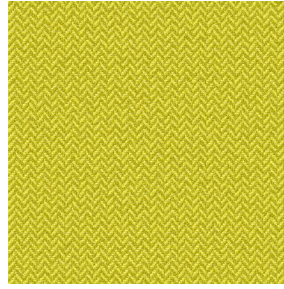
Druck design SCOURTIN



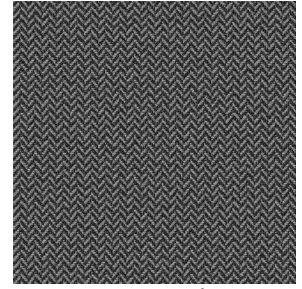
SCOURTIN Fuchsia 33



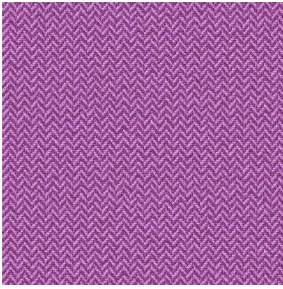
SCOURTIN Sapin 126



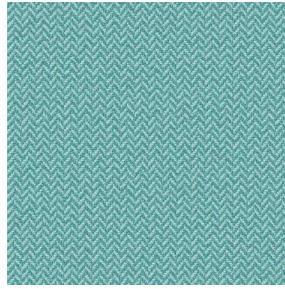
SCOURTIN Bergamote
121



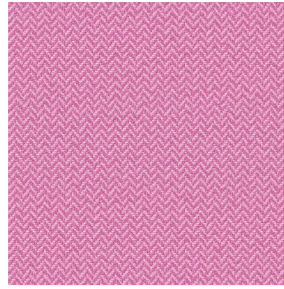
SCOURTIN Anthracite
38



SCOURTIN Violine 105



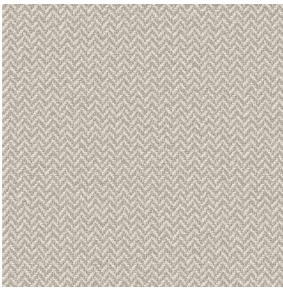
SCOURTIN Pacifique 54



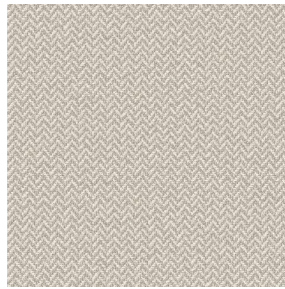
SCOURTIN Rose 129



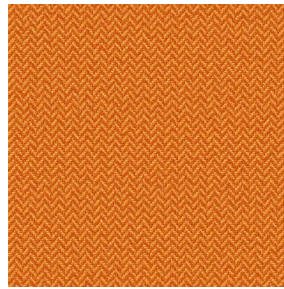
SCOURTIN Blanc 01



SCOURTIN Lin 11



SCOURTIN Naturel 26



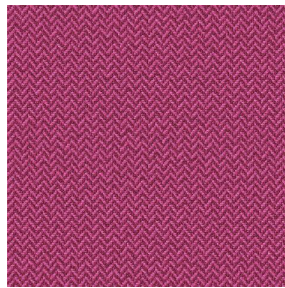
SCOURTIN Citrouille
136



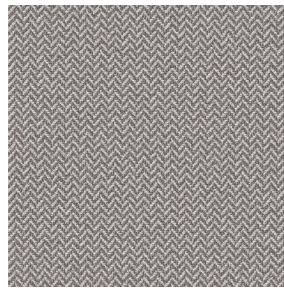
SCOURTIN Turquoise 53



SCOURTIN Brun 23



SCOURTIN Hortensia
134



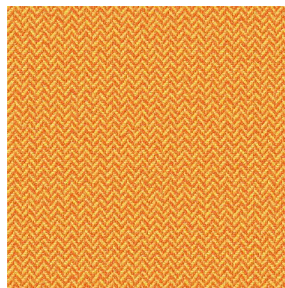
SCOURTIN Orage 123



SCOURTIN Rubis 59



SCOURTIN Ficelle 09



SCOURTIN Maïs 37



SCOURTIN Céladon 135



SCOURTIN Ebene 113

drapilux
By Sotexpro

DRAPILUX GmbH - Hofenstraße 3, 77694 Kehl - Deutschland

Non-contractual photos and colors - Indicative fitting - Fitting may vary depending on support selected

Druck design SCOURTIN



SCOURTIN Tourterelle
138



SCOURTIN Titanium 98



SCOURTIN Lagon 110



SCOURTIN Gris 97