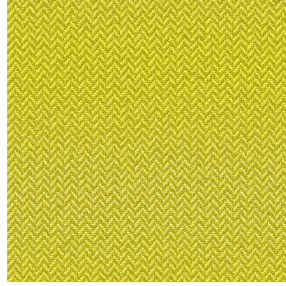




NORA Gris envers blanc 63
Druck-Trägergewebe



SCOURTIN Bergamote 121
Druck design



i Das Display berücksichtigt nicht das Druck-Trägermaterial. Die endgültige Wiedergabe kann je nach gewähltem Trägermaterial unterschiedlich sein.

Druck-Trägergewebe **NORA Gris envers blanc 63** Druck design **SCOURTIN Bergamote 121**

Support occultant pour impression, imprimable des 2 côtés dont un texturé.

Technische Eigenschaften

Applications Faltgardinen - Flächenvorhänge - Vorhänge

Zusammensetzung Polyester/acrylique

Gewicht 380 g/m²

Breite 280 cm

Stoffrichtung Rückwärtsrichtung

Eignung ↔ cm ↓ cm

Pflegehinweis     

Beschriftung

Mindestbestellmenge 25

Technische Eigenschaften

Beständigkeit

Formstabilität (%)

Verzerrung -0,5

Querfäden -0,5

Bruchdehnung

Verzerrung 28

Querfäden 12

Bruchlast (daN)

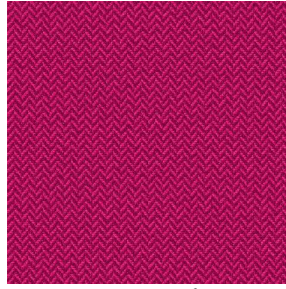
Verzerrung 140

Querfäden 57

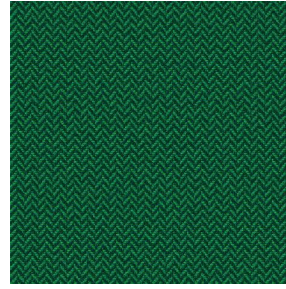
Druck design SCOURTIN



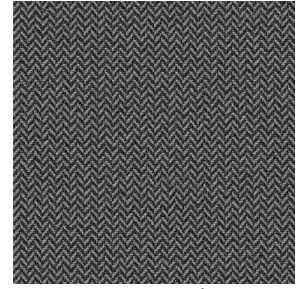
SCOURTIN Beige 63



SCOURTIN Fuchsia 33



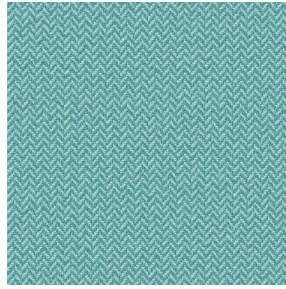
SCOURTIN Sapin 126



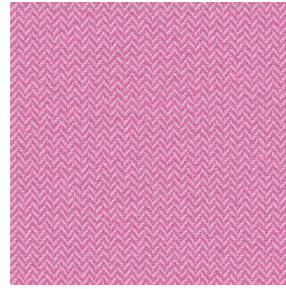
SCOURTIN Anthracite
38



SCOURTIN Violine 105



SCOURTIN Pacifique 54



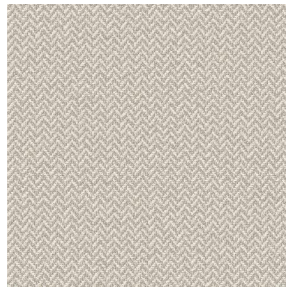
SCOURTIN Rose 129



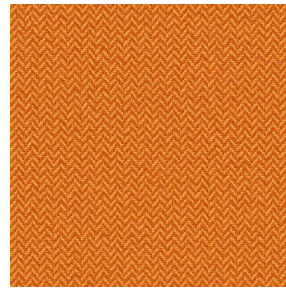
SCOURTIN Blanc 01



SCOURTIN Lin 11



SCOURTIN Naturel 26



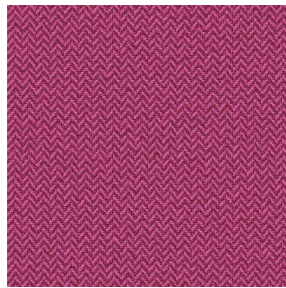
SCOURTIN Citrouille
136



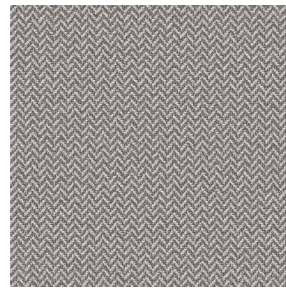
SCOURTIN Turquoise 53



SCOURTIN Brun 23



SCOURTIN Hortensia
134



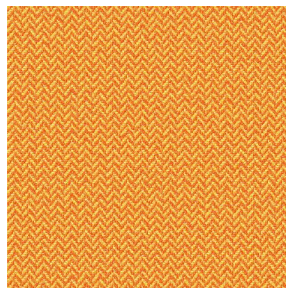
SCOURTIN Orage 123



SCOURTIN Rubis 59



SCOURTIN Ficelle 09



SCOURTIN Maïs 37



SCOURTIN Céladon 135



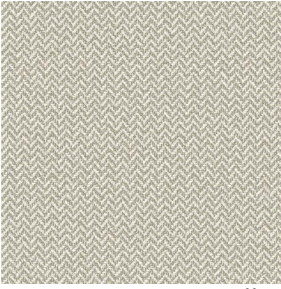
SCOURTIN Ebene 113

drapilux
By Sotexpro

DRAPILUX GmbH - Hofenstraße 3, 77694 Kehl - Deutschland

Non-contractual photos and colors - Indicative fitting - Fitting may vary depending on support selected

Druck design SCOURTIN



SCOURTIN Tourterelle
138



SCOURTIN Titanium 98



SCOURTIN Lagon 110



SCOURTIN Gris 97