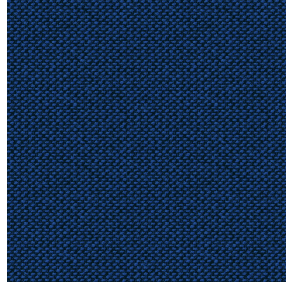
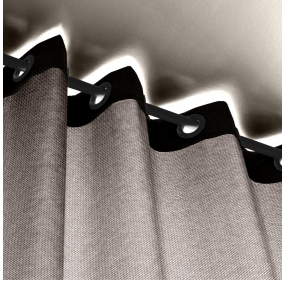




NORA Gris envers blanc 63
Druck-Trägergewebe



METIS Cobalt 114
Druck design



Das Display berücksichtigt nicht das Druck-Trägermaterial. Die endgültige Wiedergabe kann je nach gewähltem Trägermaterial unterschiedlich sein.

Technische Eigenschaften

Druck-Trägergewebe **NORA Gris envers blanc 63** Druck design **METIS Cobalt 114**

Support occultant pour impression, imprimable des 2 côtés dont un texturé.

Technische Eigenschaften

Applications Falzgardinen - Flächenvorhänge - Vorhänge

Zusammensetzung Polyester/acrylique

Gewicht 380 g/m²

Breite 280 cm

Stoffrichtung Rückwärtsrichtung

Eignung ↔ 0,0 cm ↓ 0,0 cm

Pflegehinweis

Beschriftung

Mindestbestellmenge 25

Beständigkeit

Formstabilität (%)

Verzerrung -0,5

Querfäden -0,5

Bruchdehnung

Verzerrung 28

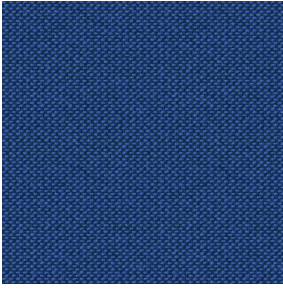
Querfäden 12

Bruchlast (daN)

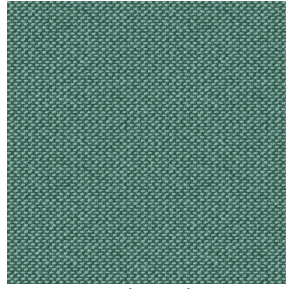
Verzerrung 140

Querfäden 57

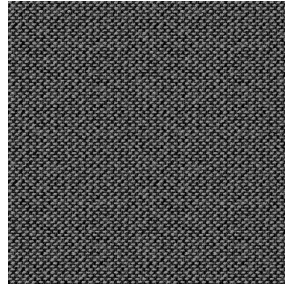
Druck design METIS



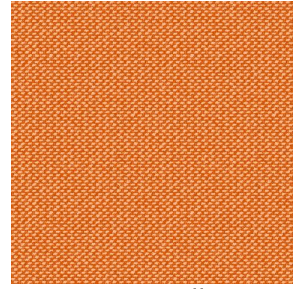
METIS Gentiane 16



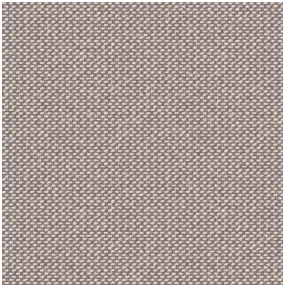
METIS Absinthe 132



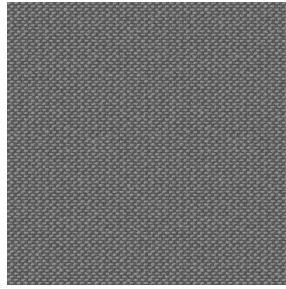
METIS Noir 10



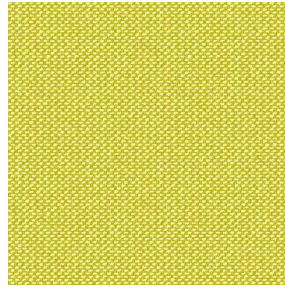
METIS Citrouille 136



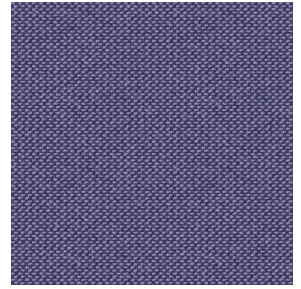
METIS Chanvre 72



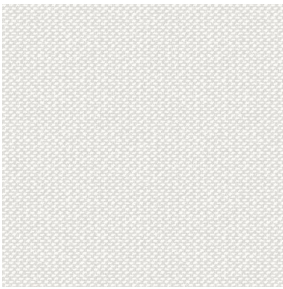
METIS Gris 97



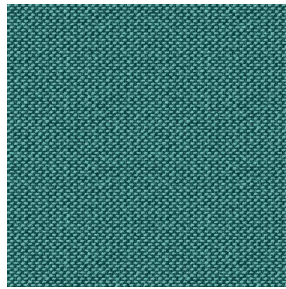
METIS Bergamote 121



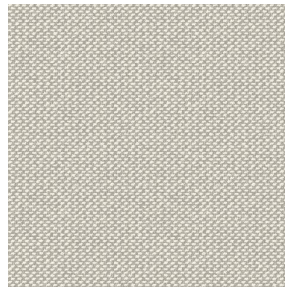
METIS Violine 105



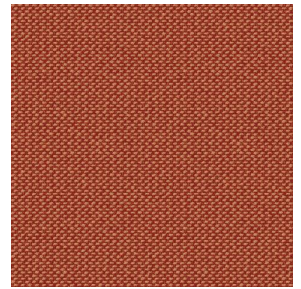
METIS Perle 96



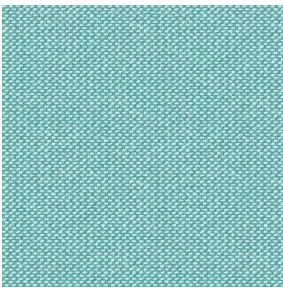
METIS Céladon 135



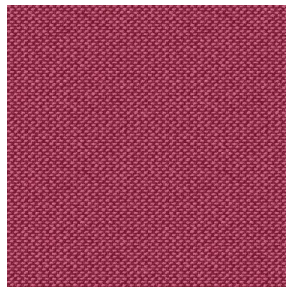
METIS Lin 11



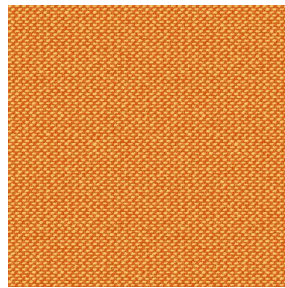
METIS Sienne 29



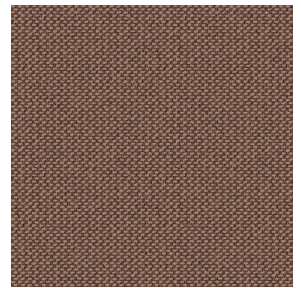
METIS Lagon 110



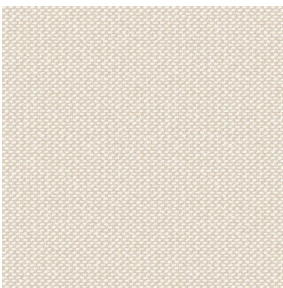
METIS Framboise 81



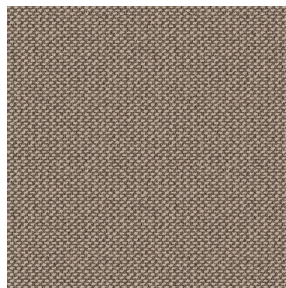
METIS Abricot 08



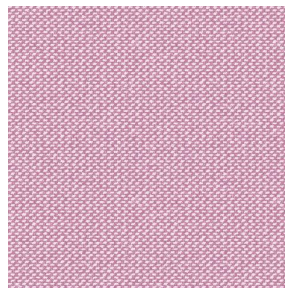
METIS Chamois 111



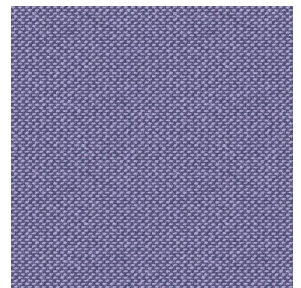
METIS Ivoire 115



METIS Ficelle 09



METIS Rose 129



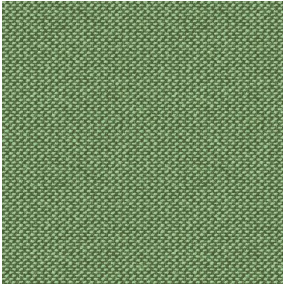
METIS Parme 79

drapilux
By Sotexpro

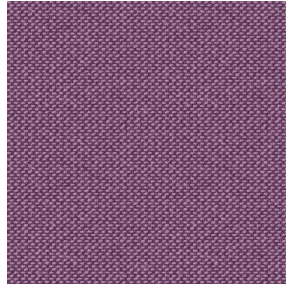
DRAPILUX GmbH - Hofenstraße 3, 77694 Kehl - Deutschland

Non-contractual photos and colors - Indicative fitting - Fitting may vary depending on support selected

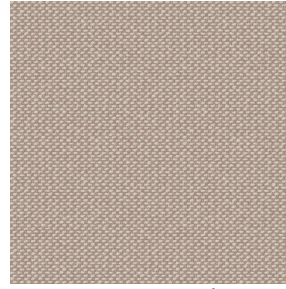
Druck design METIS



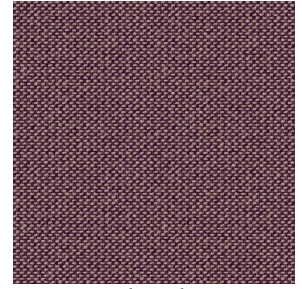
METIS Cactus 36



METIS Hortensia 134



METIS Naturel 26



METIS Chaudron 118