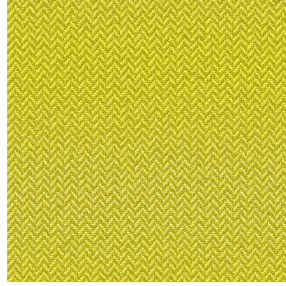




NORA Gris envers blanc 63  
Druck-Trägergewebe



SCOURTIN Bergamote 121  
Druck design



**i** Das Display berücksichtigt nicht das Druck-Trägermaterial. Die endgültige Wiedergabe kann je nach gewähltem Trägermaterial unterschiedlich sein.

# Druck-Trägergewebe **NORA Gris envers blanc 63** Druck design **SCOURTIN Bergamote 121**

Support occultant pour impression, imprimable des 2 côtés dont un texturé.

## Technische Eigenschaften

**Applications** Falzgardinen - Flächenvorhänge - Vorhänge

**Zusammensetzung** Polyester/acrylique

**Gewicht** 380 g/m<sup>2</sup>

**Breite** 280 cm

**Stoffrichtung** Rückwärtsrichtung

**Eignung** ↔ cm ↓ cm

**Pflegehinweis**     

**Beschriftung**

**Mindestbestellmenge** 25

## Technische Eigenschaften

Beständigkeit

Formstabilität (%)

Verzerrung -0,5

Querfäden -0,5

Bruchdehnung

Verzerrung 28

Querfäden 12

Bruchlast (daN)

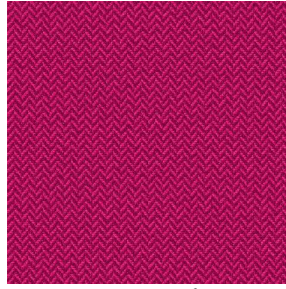
Verzerrung 140

Querfäden 57

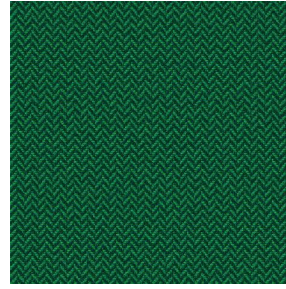
# Druck design SCOURTIN



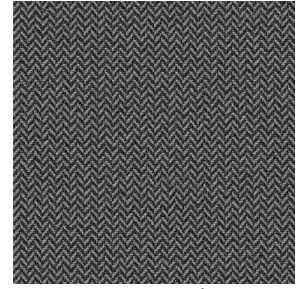
SCOURTIN Beige 63



SCOURTIN Fuchsia 33



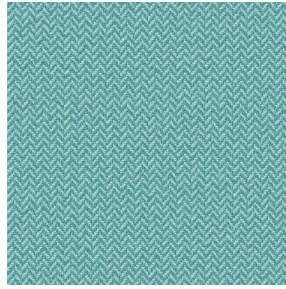
SCOURTIN Sapin 126



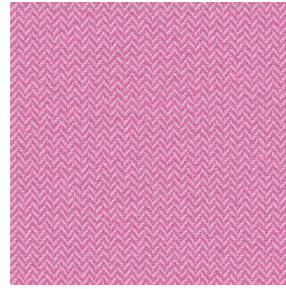
SCOURTIN Anthracite  
38



SCOURTIN Violine 105



SCOURTIN Pacifique 54



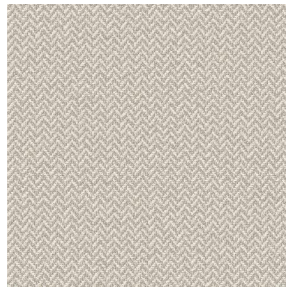
SCOURTIN Rose 129



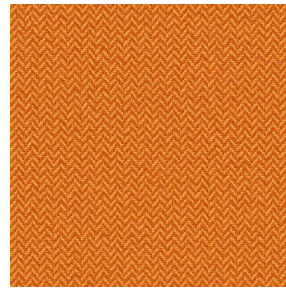
SCOURTIN Blanc 01



SCOURTIN Lin 11



SCOURTIN Naturel 26



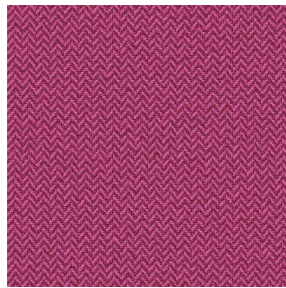
SCOURTIN Citrouille  
136



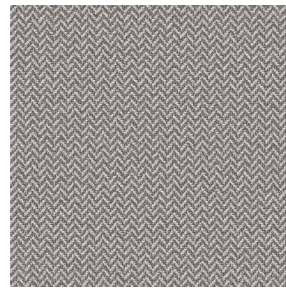
SCOURTIN Turquoise 53



SCOURTIN Brun 23



SCOURTIN Hortensia  
134



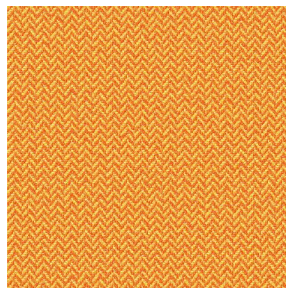
SCOURTIN Orage 123



SCOURTIN Rubis 59



SCOURTIN Ficelle 09



SCOURTIN Maïs 37



SCOURTIN Céladon 135



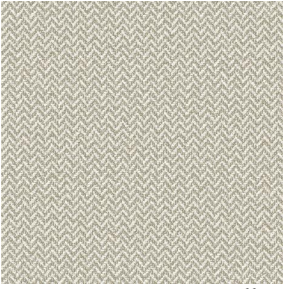
SCOURTIN Ebene 113

**drapilux**  
By Sotexpro

DRAPILUX GmbH - Hofenstraße 3, 77694 Kehl - Deutschland

Non-contractual photos and colors - Indicative fitting - Fitting may vary depending on support selected

## Druck design SCOURTIN



SCOURTIN Tourterelle  
138



SCOURTIN Titanium 98



SCOURTIN Lagon 110



SCOURTIN Gris 97