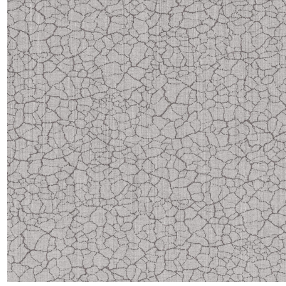




NORA Gris envers blanc 63
Druck-Trägergewebe



TERRA Titanium 98
Druck design



Druck-Trägergewebe **NORA Gris envers blanc 63** Druck design **TERRA Titanium 98**

Support occultant pour impression, imprimable des 2 côtés dont un texturé.

Technische Eigenschaften

Applications Falzgardinen - Flächenvorhänge - Vorhänge

Zusammensetzung Polyester/acrylique

Gewicht 380 g/m²

Breite 280 cm

Stoffrichtung Rückwärtsrichtung

Eignung ↔ 0,0 cm ↓ 0,0 cm

Pflegehinweis

Beschriftung

Mindestbestellmenge 25



Das Display berücksichtigt nicht das Druck-Trägermaterial. Die endgültige Wiedergabe kann je nach gewähltem Trägermaterial unterschiedlich sein.

Technische Eigenschaften

Beständigkeit

Formstabilität (%)

Verzerrung -0,5

Querfäden -0,5

Bruchdehnung

Verzerrung 28

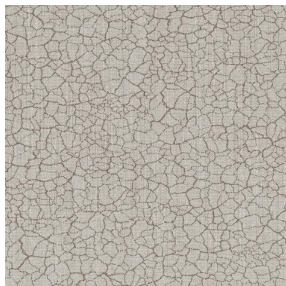
Querfäden 12

Bruchlast (daN)

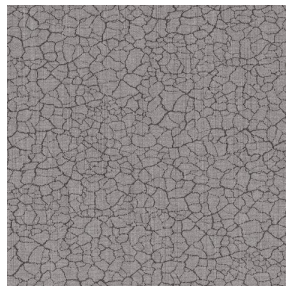
Verzerrung 140

Querfäden 57

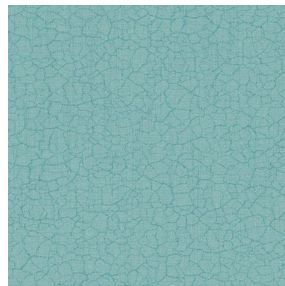
Druck design TERRA



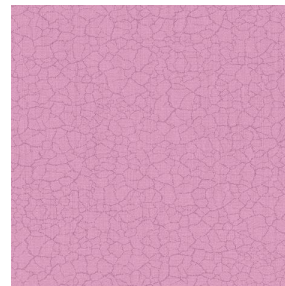
TERRA Ficelle 09



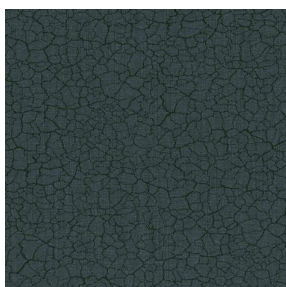
TERRA Taupe 95



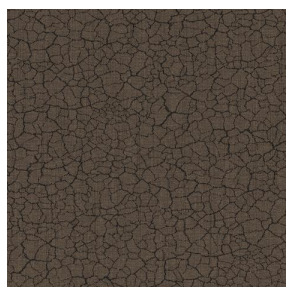
TERRA Ecume 82



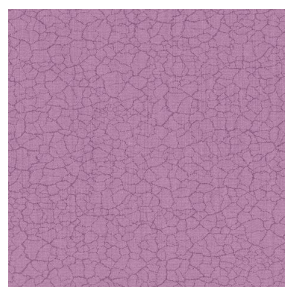
TERRA Rose 129



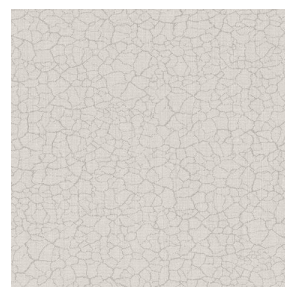
TERRA Fusain 71



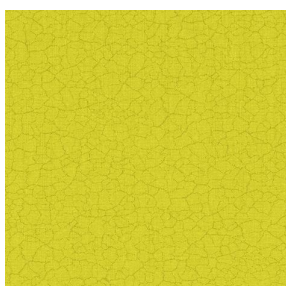
TERRA Brun 23



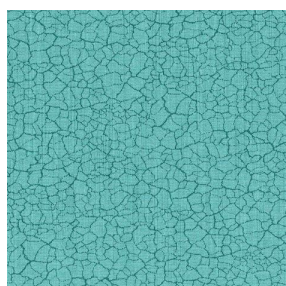
TERRA Hortensia 134



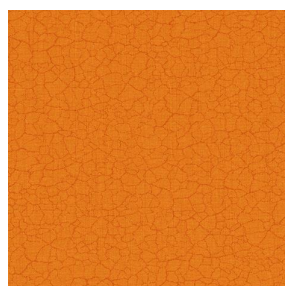
TERRA Naturel 26



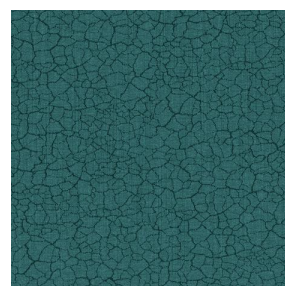
TERRA Anis 62



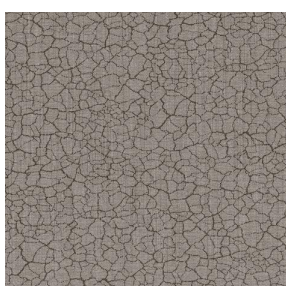
TERRA Lagon 110



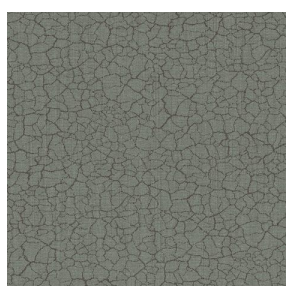
TERRA Citrouille 136



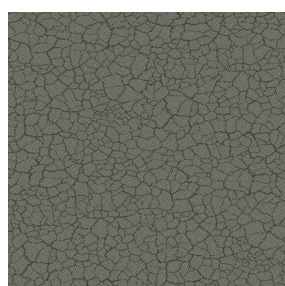
TERRA Pacifique 54



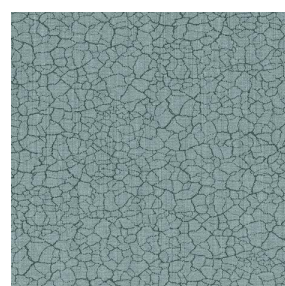
TERRA Chamois 111



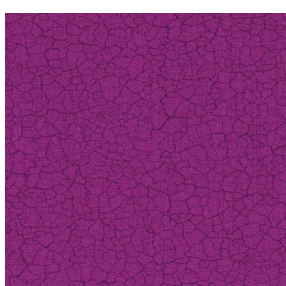
TERRA Graphite 77



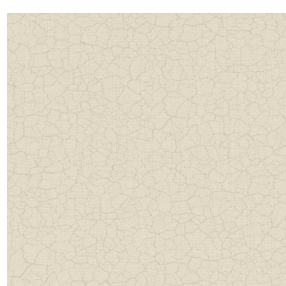
TERRA Gris 97



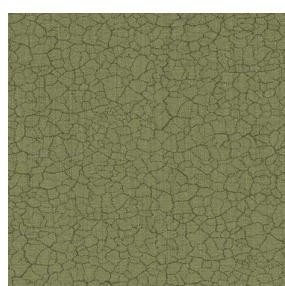
TERRA Ardoise 87



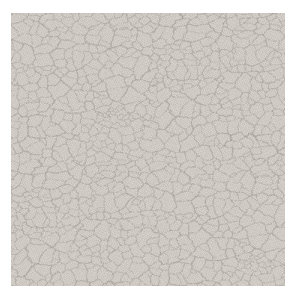
TERRA Violine 105



TERRA Chanvre 72



TERRA Argile 85



TERRA Lin 11

drapilux
By Sotexpro

DRAPILUX GmbH - Hofenstraße 3, 77694 Kehl - Deutschland

Non-contractual photos and colors - Indicative fitting - Fitting may vary depending on support selected

Druck design TERRA



TERRA Genêt 06



TERRA Céladon 135



TERRA Ebene 113



TERRA Ocre 03