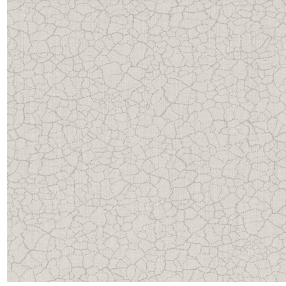




NOCTWIN BPI 00
Druck-Trägergewebe



TERRA Naturel 26
Druck design



Das Display berücksichtigt nicht das Druck-Trägermaterial. Die endgültige Wiedergabe kann je nach gewähltem Trägermaterial unterschiedlich sein.

Druck-Trägergewebe NOCTWIN BPI 00

Druck design TERRA Naturel 26

Support occultant pour impression, imprimable des 2 côtés.

Technische Eigenschaften



Feuerfestigkeit

Applications **Faltgardinen - Flächenvorhänge - Vorhänge**

Zusammensetzung **Polyester/acrylique envers floqué**

Gewicht **300 g/m²**

Breite **280 cm**

Stoffrichtung **Rückwärtsrichtung**

Eignung **↔ 0.0 cm ↓ 0.0 cm**

Pflegehinweis     

Beschriftung

Mindestbestellmenge **25**

Technische Eigenschaften

Feuerfestigkeit

B1 / IMO PASS

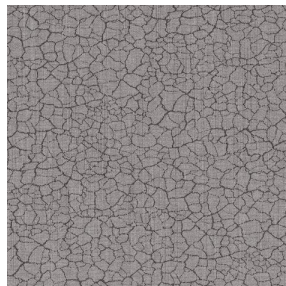
Beständigkeit

Lichtechtheit (Einheiten Klasse/8)	6
Formstabilität (%)	
Verzerrung	-1
Querfäden	0
Bruchdehnung	
Verzerrung	31
Querfäden	8
Bruchlast (daN)	
Verzerrung	120
Querfäden	43

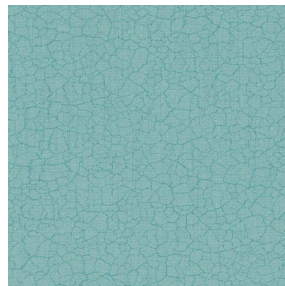
Druck design TERRA



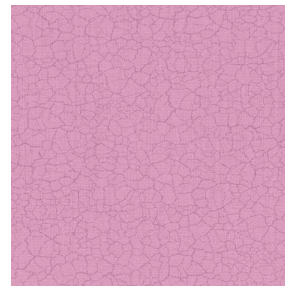
TERRA Ficelle 09



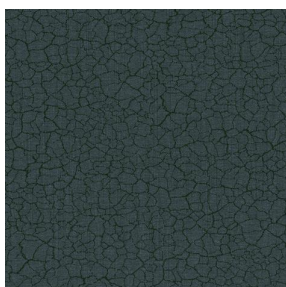
TERRA Taupe 95



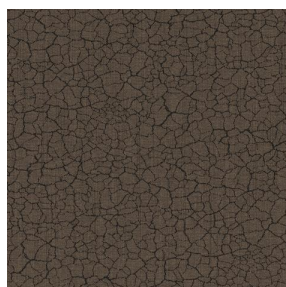
TERRA Ecume 82



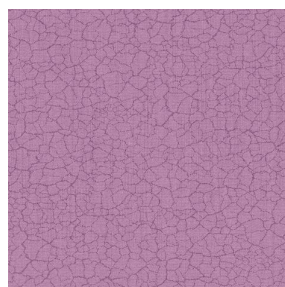
TERRA Rose 129



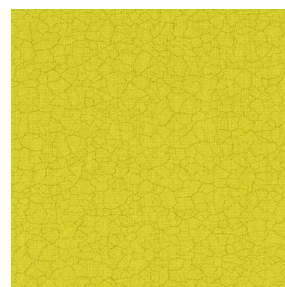
TERRA Fusain 71



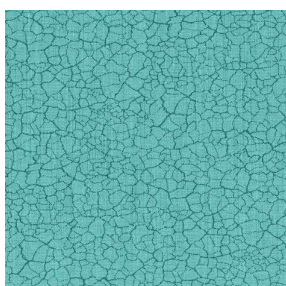
TERRA Brun 23



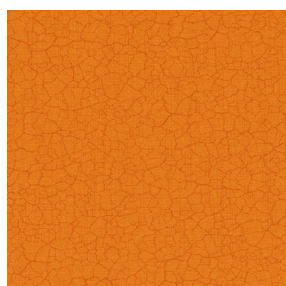
TERRA Hortensia 134



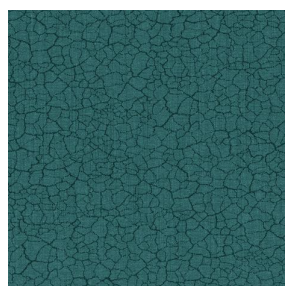
TERRA Anis 62



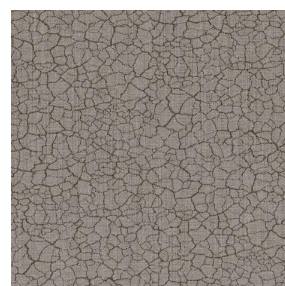
TERRA Lagon 110



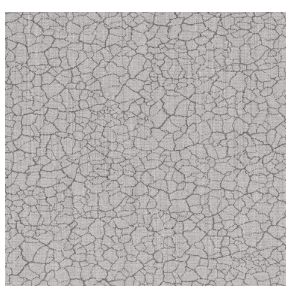
TERRA Citrouille 136



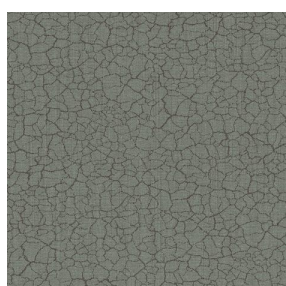
TERRA Pacifique 54



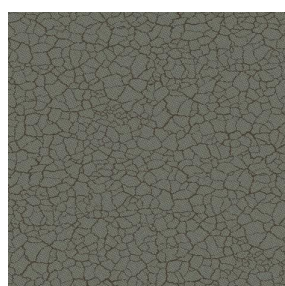
TERRA Chamois 111



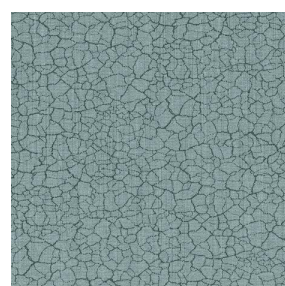
TERRA Titanium 98



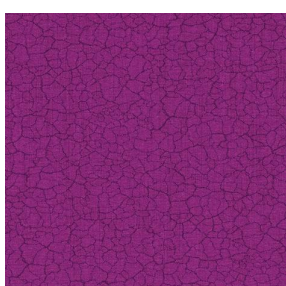
TERRA Graphite 77



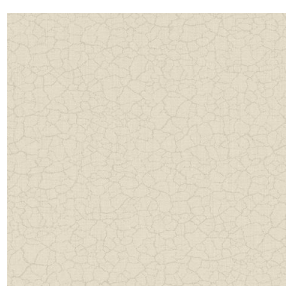
TERRA Gris 97



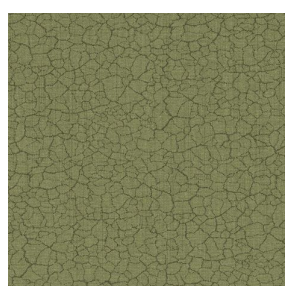
TERRA Ardoise 87



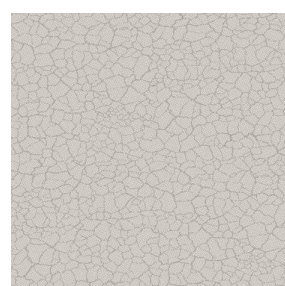
TERRA Violine 105



TERRA Chanvre 72



TERRA Argile 85



TERRA Lin 11

drapilux
By Sotexpro

DRAPILUX GmbH - Hofenstraße 3, 77694 Kehl - Deutschland

Non-contractual photos and colors - Indicative fitting - Fitting may vary depending on support selected

Druck design TERRA



TERRA Genêt 06



TERRA Céladon 135



TERRA Ebene 113



TERRA Ocre 03