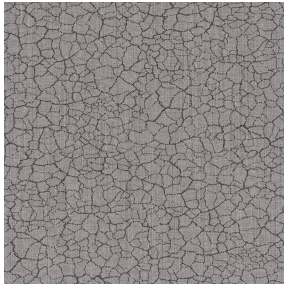



NOCTWIN BPI 00
Druck-Trägergewebe



TERRA Taupe 95
Druck design



 Das Display berücksichtigt nicht das Druck-Trägermaterial. Die endgültige Wiedergabe kann je nach gewähltem Trägermaterial unterschiedlich sein.

Druck-Trägergewebe NOCTWIN BPI 00

Druck design TERRA Taupe 95

Support occultant pour impression, imprimable des 2 côtés.

Technische Eigenschaften



Feuerfestigkeit

Applications Faltgardinen - Flächenvorhänge - Vorhänge

Zusammensetzung Polyester/acrylique envers floqué

Gewicht 300 g/m²

Breite 280 cm

Stoffrichtung Rückwärtsrichtung

Eignung ↔ 0.0 cm ↑ 0.0 cm

Pflegehinweis     

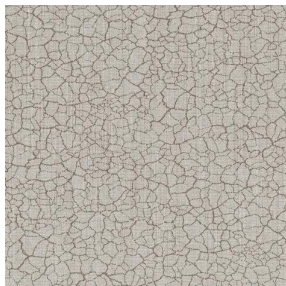
Beschriftung

Mindestbestellmenge 25

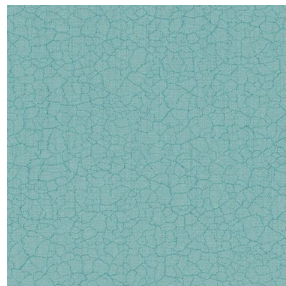
Technische Eigenschaften

Feuerfestigkeit	B1 / IMO PASS	
Beständigkeit	Lichtehtheit (Einheiten Klasse/8)	6
	Formstabilität (%)	
	Verzerrung	-1
	Querfäden	0
	Bruchdehnung	
	Verzerrung	31
	Querfäden	8
	Bruchlast (daN)	
	Verzerrung	120
	Querfäden	43

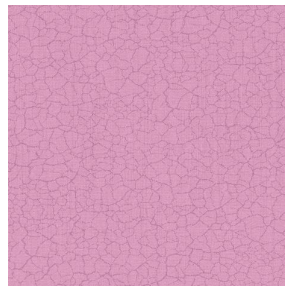
Druck design TERRA



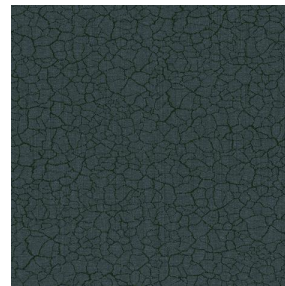
TERRA Ficelle 09



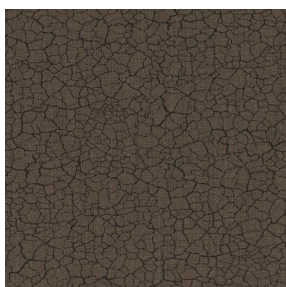
TERRA Ecume 82



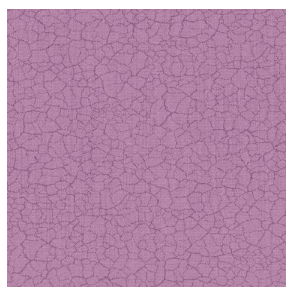
TERRA Rose 129



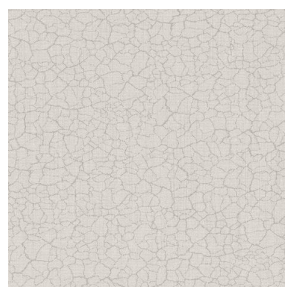
TERRA Fusain 71



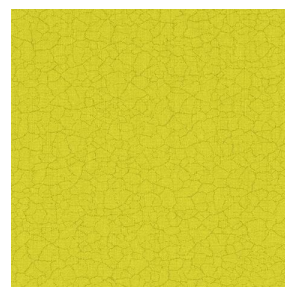
TERRA Brun 23



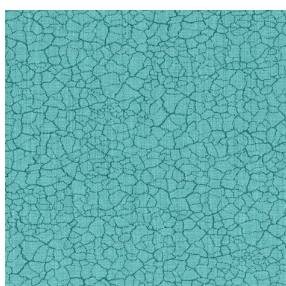
TERRA Hortensia 134



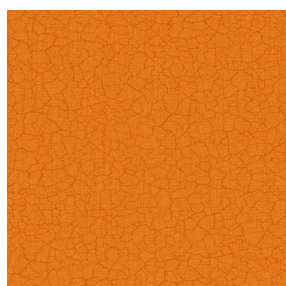
TERRA Naturel 26



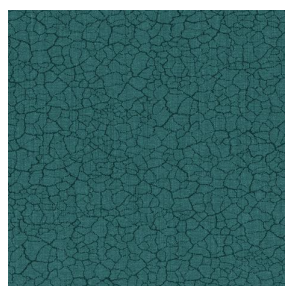
TERRA Anis 62



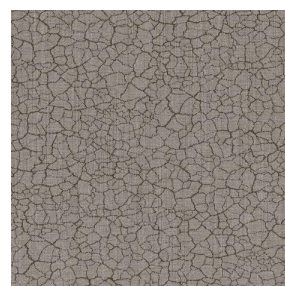
TERRA Lagon 110



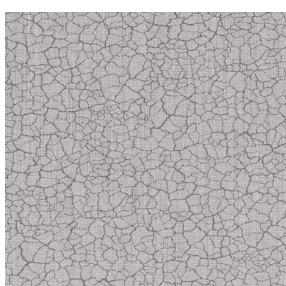
TERRA Citrouille 136



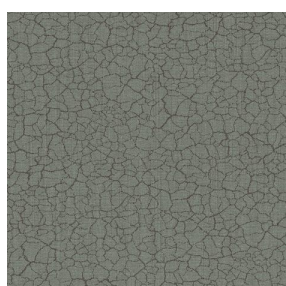
TERRA Pacifique 54



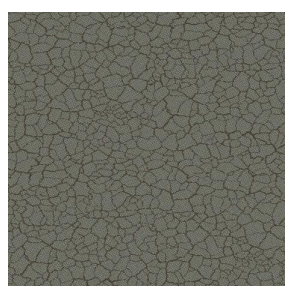
TERRA Chamois 111



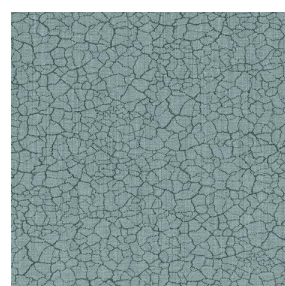
TERRA Titanium 98



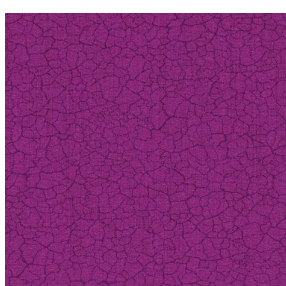
TERRA Graphite 77



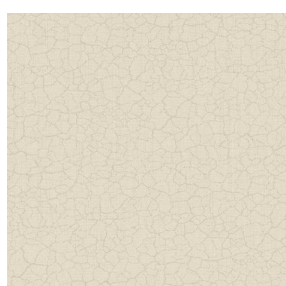
TERRA Gris 97



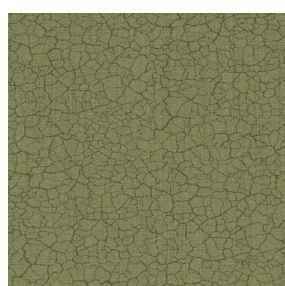
TERRA Ardoise 87



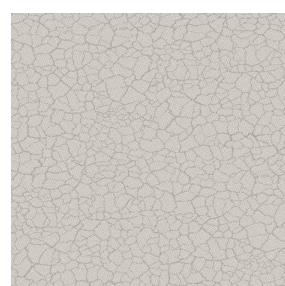
TERRA Violine 105



TERRA Chanvre 72



TERRA Argile 85



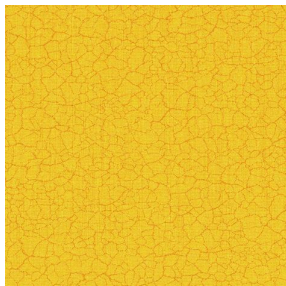
TERRA Lin 11

drapilux
By Sotexpro

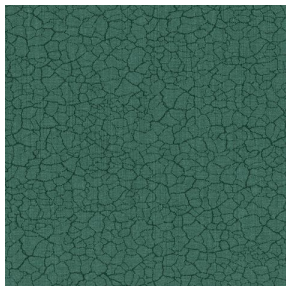
DRAPILUX GmbH - Hofenstraße 3, 77694 Kehl - Deutschland

Non-contractual photos and colors - Indicative fitting - Fitting may vary depending on support selected

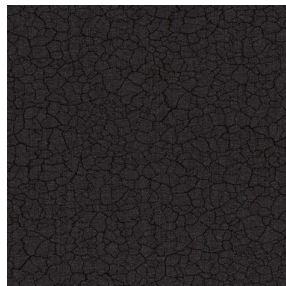
Druck design TERRA



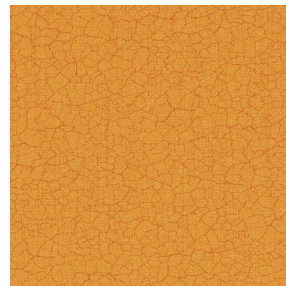
TERRA Genêt 06



TERRA Céladon 135



TERRA Ebene 113



TERRA Ocre 03

drapilux
by Sotexpro

DRAPILUX GmbH - Hafenstraße 3, 77694 Kehl - Deutschland

Non-contractual photos and colors - Indicative fitting - Fitting may vary depending on support selected