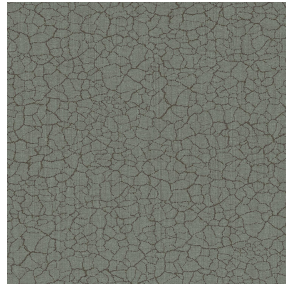




LY BPI 00
Druck-Trägergewebe



TERRA Graphite 77
Druck design



Druck-Trägergewebe **LY BPI 00** Druck design **TERRA Graphite 77**

Léger voile effet lin. Les effets flammés du LY sont peu reliés et permettent ainsi à cette qualité d'être imprimée par sublimation facilement.

Technische Eigenschaften



Feuerfestigkeit Transparent

Applications Falzgardinen - Flächenvorhänge - Vorhänge

Zusammensetzung 100% polyester/polyester FR

Gewicht 90 g/m²

Breite 290 cm

Stoffrichtung Rückwärtsrichtung

Eignung ↔ 0.0 cm ↓ 0.0 cm

Pflegehinweis

Beschriftung France Terre Textile / OEKO-TEX STANDARD 100

Mindestbestellmenge 25



Das Display berücksichtigt nicht das Druck-Trägermaterial. Die endgültige Wiedergabe kann je nach gewähltem Trägermaterial unterschiedlich sein.

Technische Eigenschaften

Feuerfestigkeit	M1 / B1 / IMO PASS	
Transparenter Schleier	Yes	
Beständigkeit	Lichtechtheit (Einheiten Klasse/8)	6
	Formstabilität (%)	
	Verzerrung	0
	Querfäden	0
	Bruchdehnung	
	Verzerrung	69
	Querfäden	58
	Bruchlast (daN)	
	Verzerrung	47
	Querfäden	24

Druck design TERRA



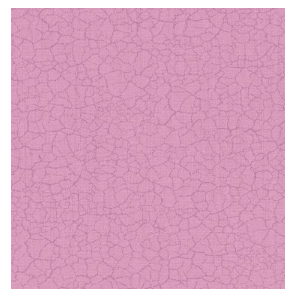
TERRA Ficelle 09



TERRA Taupe 95



TERRA Ecume 82



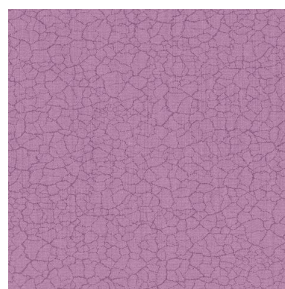
TERRA Rose 129



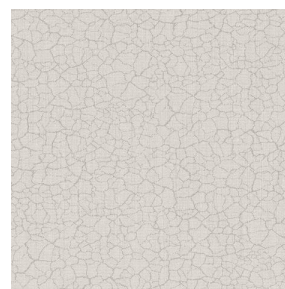
TERRA Fusain 71



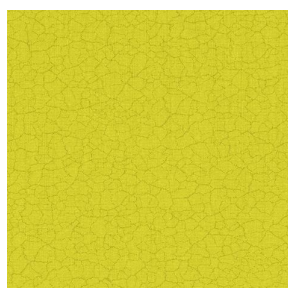
TERRA Brun 23



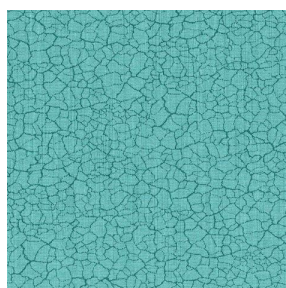
TERRA Hortensia 134



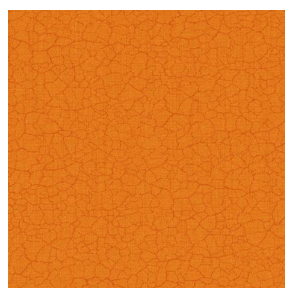
TERRA Naturel 26



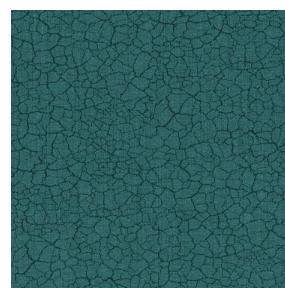
TERRA Anis 62



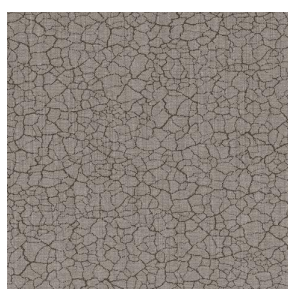
TERRA Lagon 110



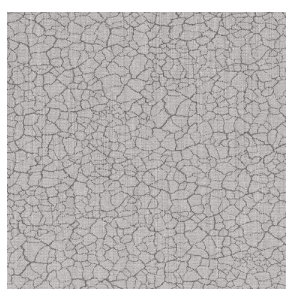
TERRA Citrouille 136



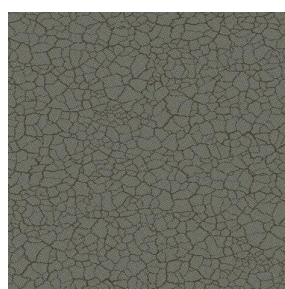
TERRA Pacifique 54



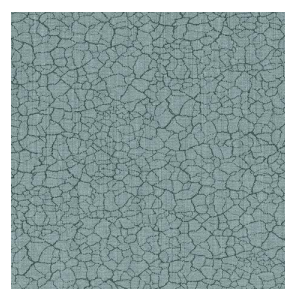
TERRA Chamois 111



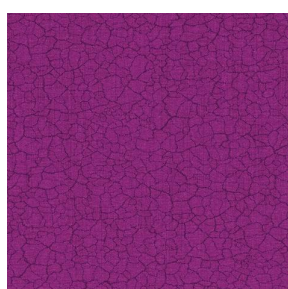
TERRA Titanium 98



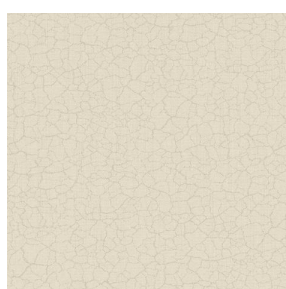
TERRA Gris 97



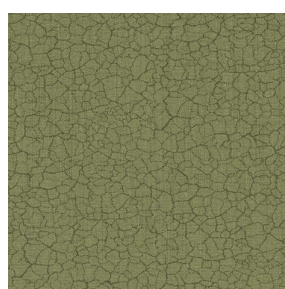
TERRA Ardoise 87



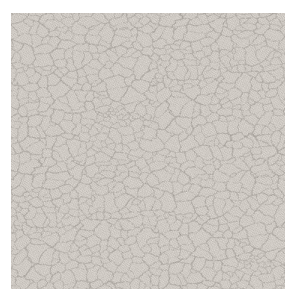
TERRA Violine 105



TERRA Chanvre 72



TERRA Argile 85



TERRA Lin 11

drapilux
By Sotexpro

DRAPILUX GmbH - Hofenstraße 3, 77694 Kehl - Deutschland

Non-contractual photos and colors - Indicative fitting - Fitting may vary depending on support selected

Druck design TERRA



TERRA Genêt 06



TERRA Céladon 135



TERRA Ebene 113



TERRA Ocre 03