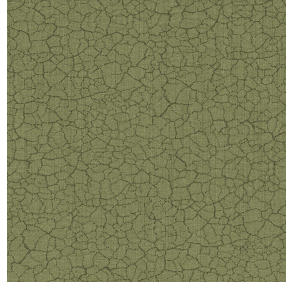


ETAMINE BPI 00
Druck-Trägergewebe



TERRA Argile 85
Druck design



Druck-Trägergewebe **ETAMINE BPI 00** Druck design **TERRA Argile 85**

Hochwertige, leichte und luftige durchscheinende Vorhänge.

Technische Eigenschaften



Feuerfestigkeit Transparent

Applications Falzgardinen - Flächenvorhänge - Vorhänge

Zusammensetzung 100% feuerfester Polyester

Gewicht 95 g/m²

Breite 290 cm

Stoffrichtung Rückwärtsrichtung

Eignung ↔ 0.0 cm ↓ 0.0 cm

Pflegehinweis     

Beschriftung France Terre Textile / OEKO-TEX STANDARD 100

Mindestbestellmenge 25



Das Display berücksichtigt nicht das Druck-Trägermaterial. Die endgültige Wiedergabe kann je nach gewähltem Trägermaterial unterschiedlich sein.

Technische Eigenschaften

Feuerfestigkeit	M1 / B1 / IMO PASS / UNI 8456 / 9174 Classe Uno	
Transparenter Schleier	Yes	
Beständigkeit	Formstabilität (%)	
	Verzerrung	0
	Querfäden	0
	Bruchdehnung	
	Verzerrung	46
	Querfäden	13
	Bruchlast (daN)	
	Verzerrung	41
Querfäden	40	

Druck design TERRA



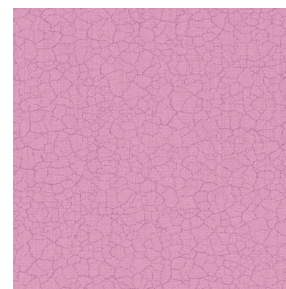
TERRA Ficelle 09



TERRA Taupe 95



TERRA Ecume 82



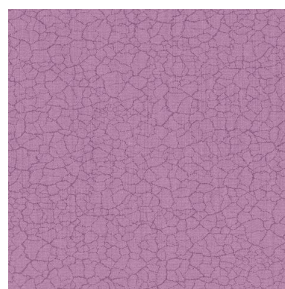
TERRA Rose 129



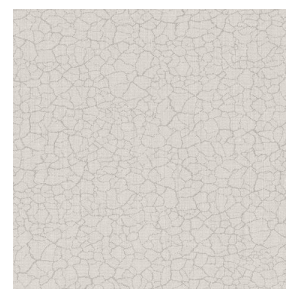
TERRA Fusain 71



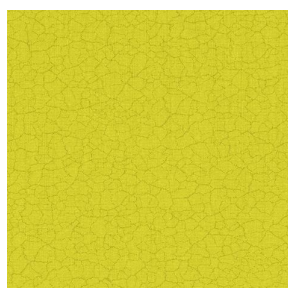
TERRA Brun 23



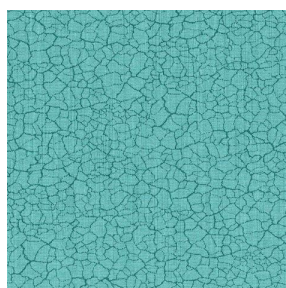
TERRA Hortensia 134



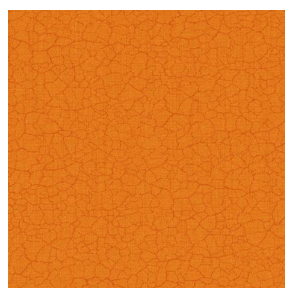
TERRA Naturel 26



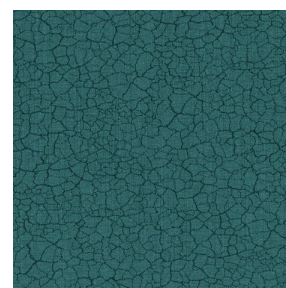
TERRA Anis 62



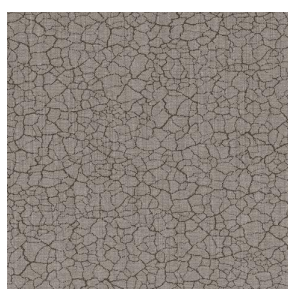
TERRA Lagon 110



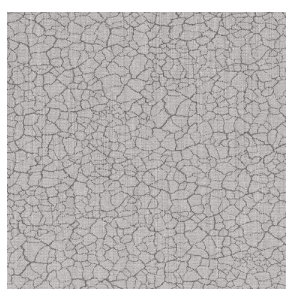
TERRA Citrouille 136



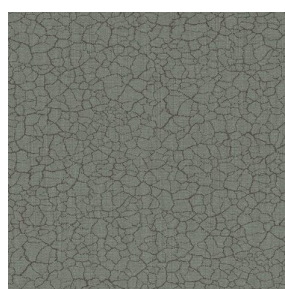
TERRA Pacifique 54



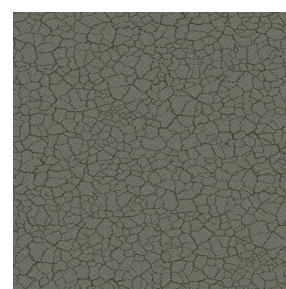
TERRA Chamois 111



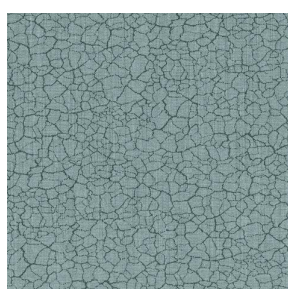
TERRA Titanium 98



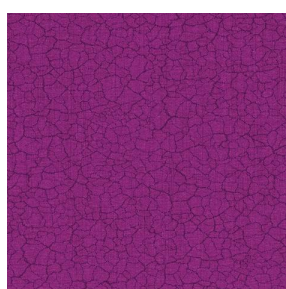
TERRA Graphite 77



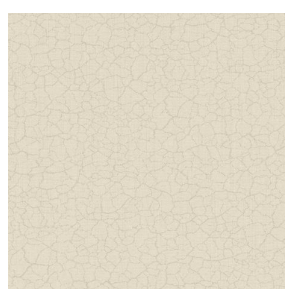
TERRA Gris 97



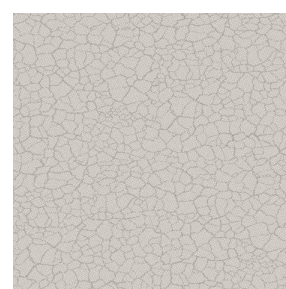
TERRA Ardoise 87



TERRA Violine 105



TERRA Chanvre 72



TERRA Lin 11

drapilux
By Sotexpro

DRAPILUX GmbH - Hofenstraße 3, 77694 Kehl - Deutschland

Non-contractual photos and colors - Indicative fitting - Fitting may vary depending on support selected

Druck design TERRA



TERRA Genêt 06



TERRA Céladon 135



TERRA Ebene 113



TERRA Ocre 03