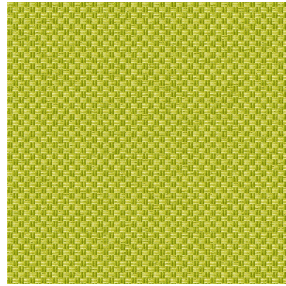




**ETAMINE BPI 00**  
Druck-Trägergewebe



**CHARLOTTE Anis 62**  
Druck design



## Druck-Trägergewebe **ETAMINE BPI 00** Druck design **CHARLOTTE Anis 62**

Hochwertige, leichte und luftige durchscheinende Vorhänge.

### Technische Eigenschaften



Feuerfestigkeit Transparent

Applications **Faltgardinen - Flächenvorhänge - Vorhänge**

Zusammensetzung **100% feuerfester Polyester**

Gewicht **95 g/m<sup>2</sup>**

Breite **290 cm**

Stoffrichtung **Rückwärtsrichtung**

Eignung **↔ 0.0 cm ↓ 0.0 cm**

Pflegehinweis     

Beschriftung **France Terre Textile / OEKO-TEX STANDARD 100**

Mindestbestellmenge **25**



Das Display berücksichtigt nicht das Druck-Trägermaterial. Die endgültige Wiedergabe kann je nach gewähltem Trägermaterial unterschiedlich sein.

## Technische Eigenschaften

Feuerfestigkeit	M1 / B1 / IMO PASS / UNI 8456 / 9174 Classe Uno
Transparenter Schleier	Yes
Beständigkeit	Formstabilität (%)
	Verzerrung <b>0</b>
	Querfäden <b>0</b>
	Bruchdehnung
	Verzerrung <b>46</b>
	Querfäden <b>13</b>
	Bruchlast (daN)
	Verzerrung <b>41</b>
	Querfäden <b>40</b>

# Druck design CHARLOTTE



CHARLOTTE Absinthe  
132



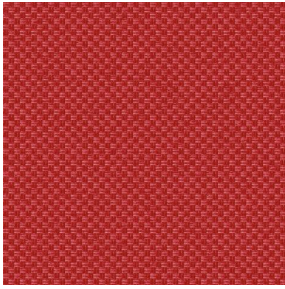
CHARLOTTE Beige 63



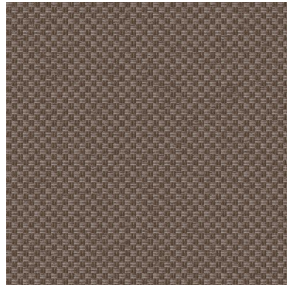
CHARLOTTE Bouteille  
101



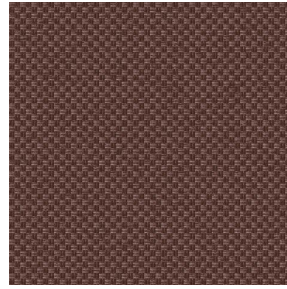
CHARLOTTE Brume 47



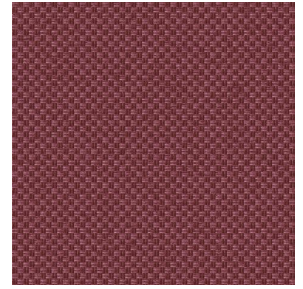
CHARLOTTE Cerise 66



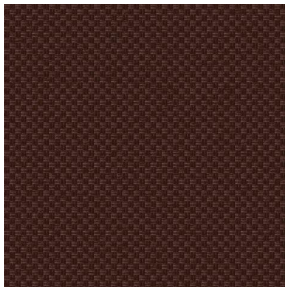
CHARLOTTE Chamois  
111



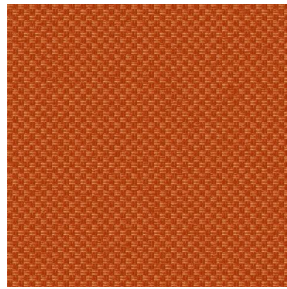
CHARLOTTE Chataigne  
55



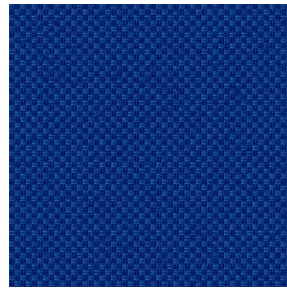
CHARLOTTE Chaudron  
118



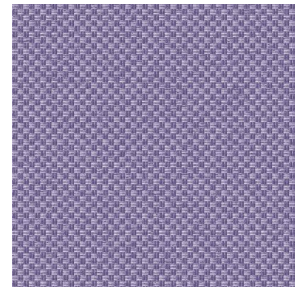
CHARLOTTE Chocolat  
70



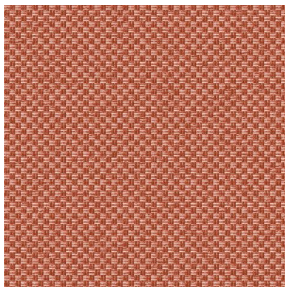
CHARLOTTE Citrouille  
136



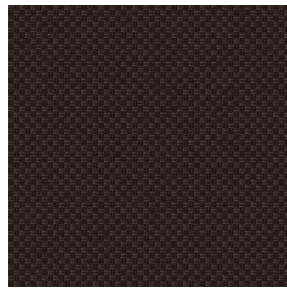
CHARLOTTE Cobalt 114



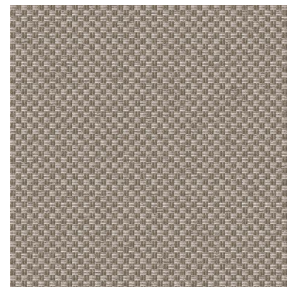
CHARLOTTE Crepuscule  
45



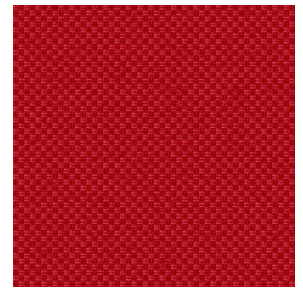
CHARLOTTE Cuivre 50



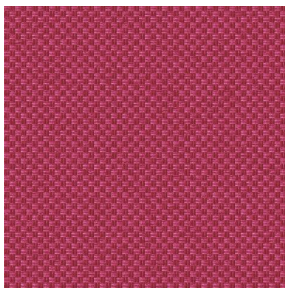
CHARLOTTE Ebene 124



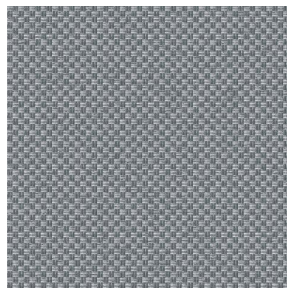
CHARLOTTE Ficelle 09



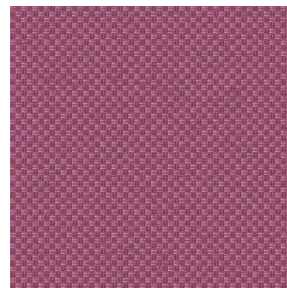
CHARLOTTE Fiesta 131



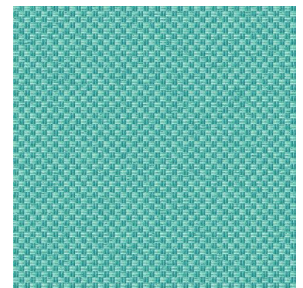
CHARLOTTE Grenat 56



CHARLOTTE Gris 97



CHARLOTTE Hortensia  
134



CHARLOTTE Lagon 110

**drapilux**  
By Sotexpro

DRAPILUX GmbH - Hofenstraße 3, 77694 Kehl - Deutschland

Non-contractual photos and colors - Indicative fitting - Fitting may vary depending on support selected

# Druck design CHARLOTTE



CHARLOTTE Lilas 19



CHARLOTTE Lin 11



CHARLOTTE Mais 37



CHARLOTTE Melon 22



CHARLOTTE Menthe  
122



CHARLOTTE Mordore  
133



CHARLOTTE Mousse 92



CHARLOTTE Noir 10



CHARLOTTE Océan 91



CHARLOTTE Opéra 104



CHARLOTTE Orange 15



CHARLOTTE Pacifique  
54



CHARLOTTE Prairie 125



CHARLOTTE Printemps  
130



CHARLOTTE Sienne 29



CHARLOTTE Souris 31



CHARLOTTE Terre 107



CHARLOTTE Tilleul 103



CHARLOTTE Vieux rose  
64



CHARLOTTE Violine 105

**drapilux**  
By Sotexpro

DRAPILUX GmbH - Hafenstraße 3, 77694 Kehl - Deutschland

Non-contractual photos and colors - Indicative fitting - Fitting may vary depending on support selected