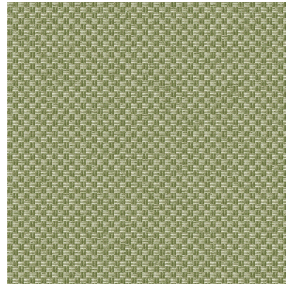




**COMET BPI 00**  
Druck-Trägergewebe



**CHARLOTTE Tilleul 103**  
Druck design



# Druck-Trägergewebe **COMET BPI 00** Druck design **CHARLOTTE Tilleul 103**

Druck-Trägergewebe zur Verdunkelung

## Technische Eigenschaften



Feuerfestigkeit

**Applications** Falzgardinen - Flächenvorhänge - Vorhänge

**Zusammensetzung** 100% Polyester mit weiß meliertem Acryl-Trägermaterial

**Gewicht** 390 g/m<sup>2</sup>

**Breite** 280 cm

**Stoffrichtung** Rückwärtsrichtung

**Eignung** ↔ 0.0 cm ↓ 0.0 cm

**Pflegehinweis**     

**Beschriftung**

**Mindestbestellmenge** 25



Das Display berücksichtigt nicht das Druck-Trägermaterial. Die endgültige Wiedergabe kann je nach gewähltem Trägermaterial unterschiedlich sein.

## Technische Eigenschaften

Feuerfestigkeit

EN13773 : 2003 Class 1 / BS 5867 TYPE B / B1 / IMO PASS / UNI 8456 / 9174 Classe Uno

Beständigkeit

Formstabilität (%)

Verzerrung 0

Querfäden 0

Bruchdehnung

Verzerrung 38

Querfäden 38

Bruchlast (daN)

Verzerrung 170

Querfäden 120



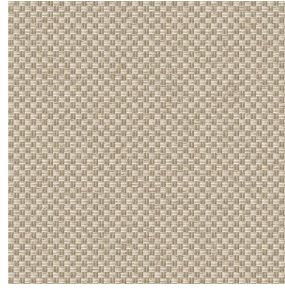
# Druck design CHARLOTTE



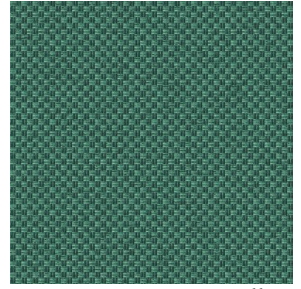
CHARLOTTE Absinthe  
132



CHARLOTTE Anis 62



CHARLOTTE Beige 63



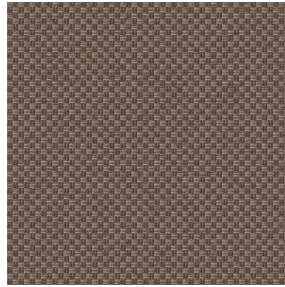
CHARLOTTE Bouteille  
101



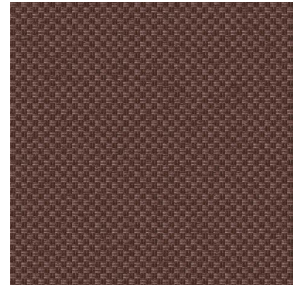
CHARLOTTE Brume 47



CHARLOTTE Cerise 66



CHARLOTTE Chamois  
111



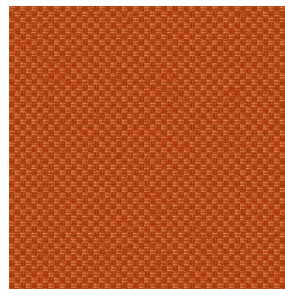
CHARLOTTE Chataigne  
55



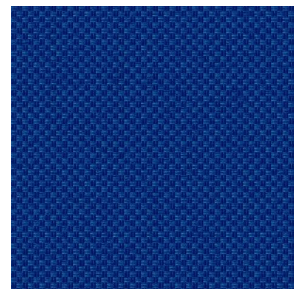
CHARLOTTE Chaudron  
118



CHARLOTTE Chocolat  
70



CHARLOTTE Citrouille  
136



CHARLOTTE Cobalt 114



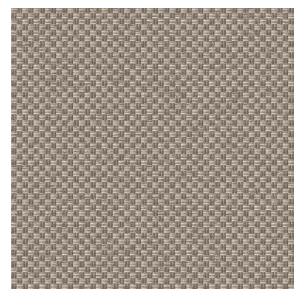
CHARLOTTE Crepuscule  
45



CHARLOTTE Cuivre 50



CHARLOTTE Ebene 124



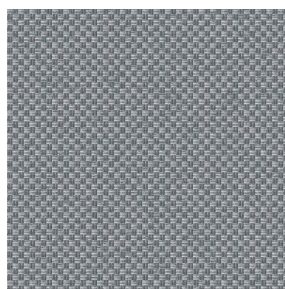
CHARLOTTE Ficelle 09



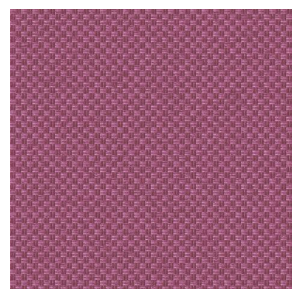
CHARLOTTE Fiesta 131



CHARLOTTE Grenat 56



CHARLOTTE Gris 97



CHARLOTTE Hortensia  
134

**drapilux**  
By Sotexpro

DRAPILUX GmbH - Hofenstraße 3, 77694 Kehl - Deutschland

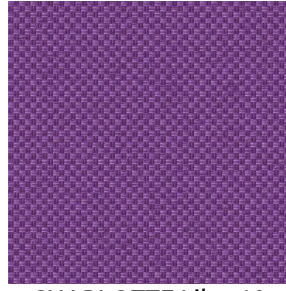
Non-contractual photos and colors - Indicative fitting - Fitting may vary depending on support selected



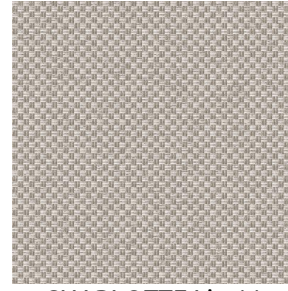
# Druck design CHARLOTTE



CHARLOTTE Lagon 110



CHARLOTTE Lilas 19



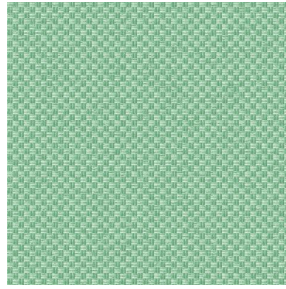
CHARLOTTE Lin 11



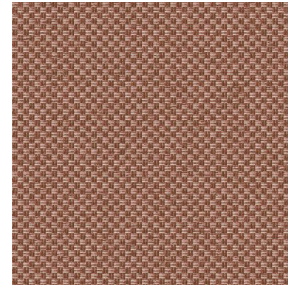
CHARLOTTE Maïs 37



CHARLOTTE Melon 22



CHARLOTTE Menthe  
122



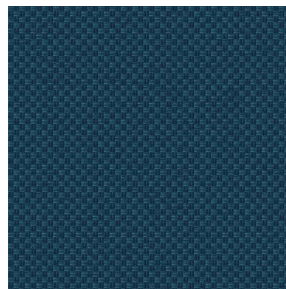
CHARLOTTE Mordore  
133



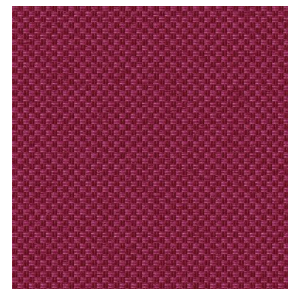
CHARLOTTE Mousse 92



CHARLOTTE Noir 10



CHARLOTTE Océan 91



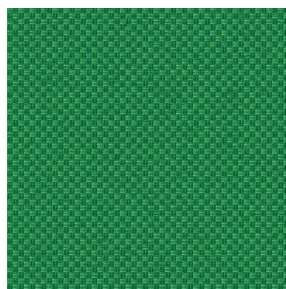
CHARLOTTE Opéra 104



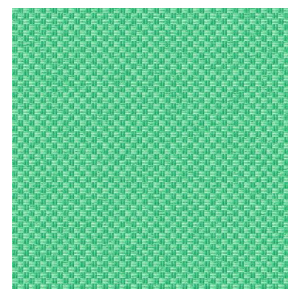
CHARLOTTE Orange 15



CHARLOTTE Pacifique  
54



CHARLOTTE Prairie 125



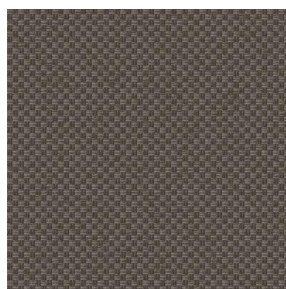
CHARLOTTE Printemps  
130



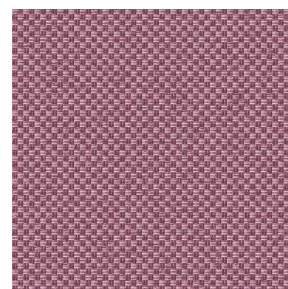
CHARLOTTE Sienne 29



CHARLOTTE Souris 31



CHARLOTTE Terre 107



CHARLOTTE Vieux rose  
64



CHARLOTTE Violine 105

**drapilux**  
By Sotexpro

DRAPILUX GmbH - Hafenstraße 3, 77694 Kehl - Deutschland

Non-contractual photos and colors - Indicative fitting - Fitting may vary depending on support selected